

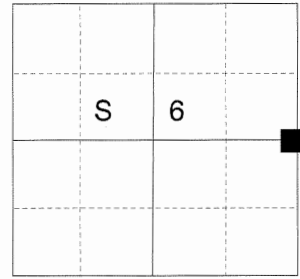
CERTIFIED RECORD OF LAND CORNER MONUMENTATION

HISTORY OF ORIGINAL CORNER ESTABLISHED:

Corner originally established by Henry Meldrum under GLO contract 450, dated June 11, 1882. Surveyor General field notes state:

Set basalt stone 24x15x6 ins., 18 ins. in ground for 1/4 Sec. Cor. marked 1/4 on W face and raised mound of stone alongside.

T 1 S R 40 E C-05



DESCRIPTION OF CORNER EVIDENCE FOUND:

None.

SEE PARTITION PLAT NUMBER 20160020T

DESCRIPTION OF MONUMENT AND ACCESSORIES I ESTABLISHED

TO PERPETUATE THE ORIGINAL LOCATION OF THIS CORNER:

At the proportionate position, I set a 2 1/2" x 30" aluminum pipe monument, with 2 1/2" aluminum cap attached, marked as shown below, 15" in the ground, in a collar of stone, 5 ft. in diameter, from which:

NEW BEARING OBJECTS:

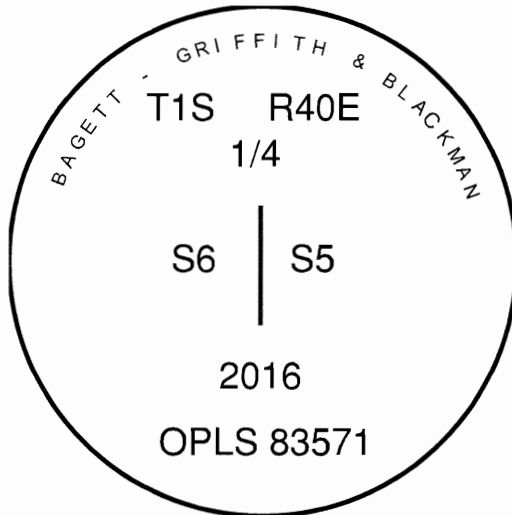
- A 5/8"x15" iron pin bears North 33°05' East, a distance of 18.10 feet, with 1 1/2" aluminum cap marked BGB SURVEY MARKER NE RP.
- A 5/8"x15" iron pin bears South 65°13' East, a distance of 26.00 feet, with 1 1/2" aluminum cap marked BGB SURVEY MARKER SE RP.
- A 5/8"x15" iron pin bears South 19°47' West, a distance of 20.00 feet, with 1 1/2" aluminum cap marked BGB SURVEY MARKER SW RP.
- A 5/8"x15" iron pin bears North 68°23' West, a distance of 15.48 feet, with 1 1/2" aluminum cap marked BGB SURVEY MARKER NW RP.

I hereby certify that this monument was set October 21, 2016.

REGISTERED
PROFESSIONAL
LAND SURVEYOR

Jeffrey S. Hsu
OREGON
June 2, 2010
JEFFREY S. HSU
83571

Renewal Date: June 30, 2017



**UNION COUNTY
SURVEYOR**

Date Received 10/31/16

Date Filed 10/31/16

Filed By *Al Galun*

File Number 046-2016R

I use a RTK GPS unit in the establishment of the accessories. Basis of Bearings is as per Partition Plat for Kent Coppiner filed concurrently. Bearings and distances are to the center of the aluminum caps.

HORIZONTAL CONTROL DATA
UNION COUNTY, OREGON
OREGON STATE PLANE, NORTH ZONE (3601)

STA NAME: 201610

1/4 SECTION CORNER COMMON TO SECTIONS 5 AND 6

TWP. 1 S. RGE. 40 E.

GEODETIC COORD: NAD 83(91)

DATE TIED: October 21, 2016

LAT: 45 ° 30 ' 26.95686 " N

SURVEYOR: RICK G. ROBINSON
OPLS 2219

LONG: 117 ° 51 ' 0.14823 " W

FIRM: BAGETT, GRIFFITH, & BLACKMAN
2006 ADAMS AVENUE
LAGRANDE, OR 97850
(541) 963-6092

SP. COOR: NAD 83(91)

N: 682257.707 INT FT.

E: 8881341.377 INT FT.

TYPE: GPS

THETA: 1 ° 52 ' 45.5294815 "

ORDER: SECOND CLASS: 1

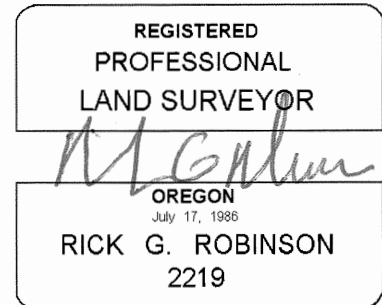
SCALE FACTOR: 0.9999120367

ELEV: 3430.16 US FT.

ELEV: DATUM: NGVD 29

COMMENTS:

2 1/2" aluminum monument with cap marked
as shown, in mound of stone



Renewal Date: December 31, 2016

1 METER = 3.2808333333... US FEET = 39.37 INCHES

1 METER = 3.280839895 INT'L FEET OR 1 INCH = 2.54 CM

TO CALCULATE ELEVATION FACTOR (IN THE NORTH AMERICAN CONTINENT)

DIVIDE 20,906,000 BY (20,906,000 + ELLIPSOID ELEV. IN FEET)