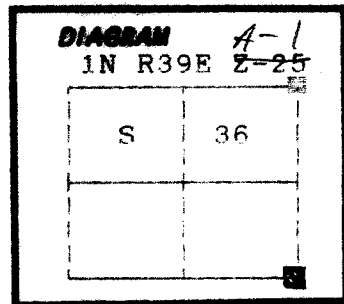


CERTIFIED RECORD OF LAND CORNER MONUMENTATION

History of original corner establishment:

Corner originally established by Timothy W. Davenport under GLO contract number 120, dated July 20, 1863. Surveyor General record states:

Set post corner to Secs 36 + 31. Made mound of stone.



No record of subsequent monumentation found in Union County survey records.

Description of corner evidence found:

Found a mound of stone 2 feet west of ancient fence North and South

Found the position to be harmonious with road and fences east and west. Also harmonious with monuments found at SE corner of section 33 T1N R39E, and SE corner of Section 32 T1N R40E.

See map of Union County survey number 14-90.

Description of monument and accessories established to perpetuate the original location of this corner:

At the center of the mound of stone, I set a 2 1/2" x 30" aluminum pipe with aluminum cap marked as shown, 18 inches in the ground, from which;
New Bearing Objects
A 5/8" x 30" rebar with plastic cap marked BGA SURVEY MARKER bears N 35° E a distance of 8.99 feet.

An 18" x 4" boulder with 10" above ground bears S 6° E a distance of 29.30 feet, marked X B0

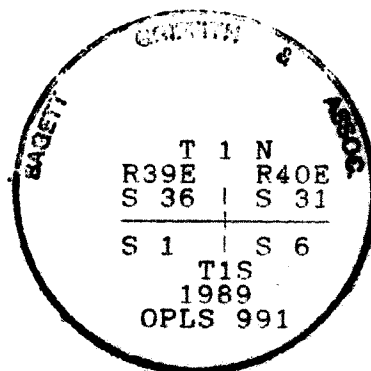
A 1/2" x 30" rebar bears S 43° W, a distance of 9.50 feet.

A 28" x 15" boulder with 4" above ground bears N 24° W, a distance of 19.32 feet, marked X B0

Raised a mound of stone around monument, 3 ft. base to top of cap.

I hereby certify that the above corner point was perpetuated as hereon described on December 19, 1989.
Witness:

Jeff Petersen and Larry Pitcher



REGISTERED PROFESSIONAL LAND SURVEYOR

Gregory T. Blackman
OREGON
JULY 13, 1975
GREGORY T. BLACKMAN
991

I used a steel tape and magnetic compass in establishing the accessories. I used 25° declination for bearings to BTS.

Office of..... County of.....
State of..... I hereby certify that the within instrument was filed in this office
for record on the..... day of.....

(COUNTY OFFICIAL)

UNION COUNTY SURVEYOR (DEPUTY)

by *Gregory T. Blackman*

Date Received 4-27-90

Date Filed 5-5-90

By *Gregory T. Blackman*

File No. 40-90R

A-25

HORIZONTAL CONTROL DATA

UNION COUNTY, OREGON

OREGON STATE PLANE, NORTH ZONE (3601)

STA NAME: 201613

SECTION CORNER COMMON TO SECTIONS 1, 6, 31 AND 36

TWP. 1N & 1S RGE. 39 & 40 E.

GEODETIC COORD: NAD 83(91)

DATE TIED: October 21, 2016

LAT: 45 ° 30 ' 53.30564 " N

SURVEYOR: RICK G. ROBINSON
OPLS 2219

LONG: 117 ° 52 ' 13.63837 " W

FIRM: BAGETT, GRIFFITH, & BLACKMAN
2006 ADAMS AVENUE
LAGRANDE, OR 97850
(541) 963-6092

SP. COOR: NAD 83(91)

N: 684753.919 INT FT.

E: 8876023.860 INT FT.

TYPE: GPS

THETA: 1 ° 51 ' 53.4113016 "

ORDER: SECOND CLASS: 1

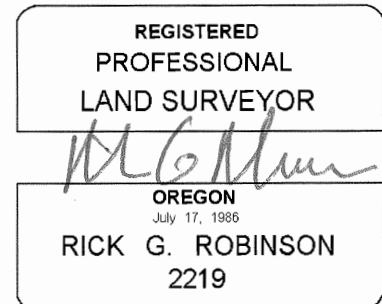
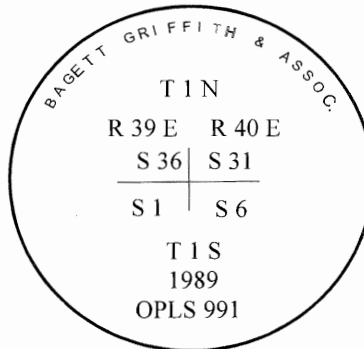
SCALE FACTOR: 0.9999127999

ELEV: 2986.78 US FT.

ELEV: DATUM: NGVD 29

COMMENTS:

2 ½" aluminum monument with cap marked
as shown, in mound of stone



Renewal Date: December 31, 2016

1 METER = 3.2808333333... US FEET = 39.37 INCHES

1 METER = 3.280839895 INT'L FEET OR 1 INCH = 2.54 CM

TO CALCULATE ELEVATION FACTOR (IN THE NORTH AMERICAN CONTINENT)

DIVIDE 20,906,000 BY (20,906,000 + ELLIPSOID ELEV. IN FEET)