

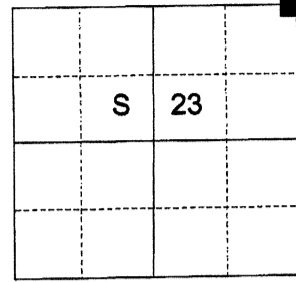
**CERTIFIED RECORD OF LAND CORNER MONUMENTATION**

**HISTORY OF ORIGINAL CORNER ESTABLISHED:**

Corner originally established by David P. Thompson under GLO Contract Number 103, dated July 3rd, 1863. Surveyor General Field Notes state:

Set post for corner to sec 13,14,23 an 24 from which  
A Pine 10 in. diam bears N20°W 5 lks dist  
A Pine 8 in. diam bears N65°E 13 lks dist  
A Pine 8 in. diam bears S38°E 11 lks dist  
A Pine 15 in. diam bears S65°W 35 lks dist

T 1 S R 39 E N-21



**DESCRIPTION OF CORNER EVIDENCE FOUND:**

Found an unrecorded 2" iron pipe with a 3" "OREGON STATE BOARD OF FORESTRY" brass cap, 6" above ground, marked as shown below, from which:  
A 24" Ponderosa Pine bears South 55° West, a dist. of 51.70 feet with a with healed blaze, Board of Forestry loc. tag, and a Boise Cascade loc. tag  
An 18" stump remnant bears South 65° West, a dist. of 23.60 feet with BT scribe visible on partial blaze (original SW BT)  
An 18" Ponderosa Pine bears North 56° West, a dist. of 24.65 feet with healed blaze and Board of Forestry loc. tag

**DESCRIPTION OF MONUMENT AND ACCESSORIES I ESTABLISHED TO PERPETUATE THE ORIGINAL LOCATION OF THIS CORNER:**

From the iron pipe:

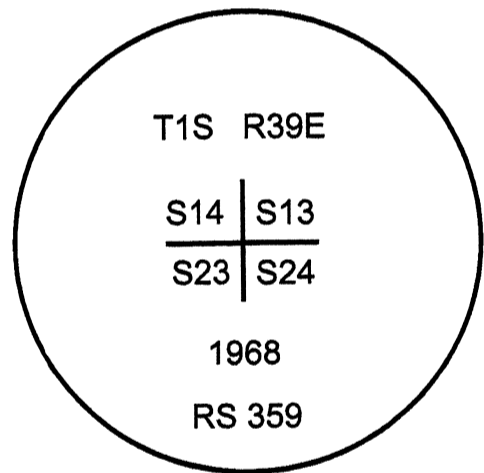
**NEW BEARING OBJECTS:**

A 14" Ponderosa Pine bears North 56° East, a dist. of 20.20 feet, marked T1S R39E S13 BT  
A 14" Ponderosa Pine bears South 76° East, a dist. of 7.05 feet, marked T1S R39E S24 BT

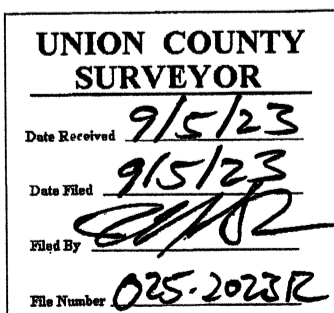
Monument falls on Northwest corner of rock jack to North/South bearing fence line.

I hereby certify that the corner was monumented on July 27, 2023.

Witnesses: Kyle Tucker, Adam Gordon



Renewal Date: June 30, 2025



I used a tape and compass in the establishment of the new accessories. Bearing is measured to a brass washer labeled OPLS 83571 located at the center of the BT blaze, with a declination of 14° East. Distance is measured to a 60d spike nailed to the right side base of tree.