

CERTIFIED RECORD OF LAND CORNER MONUMENTATION

HISTORY OF ORIGINAL CORNER ESTABLISHED:

Corner originally established by David P. Thompson under GLO contract no. 103, dated September 3, 1863. Surveyor General field notes state:

Set post for corner to secs. 16, 17, 20 and 21 in mound of earth with charred stake, pits, trench as per instructions.

Old Book Survey Page 130, dated December 17, 1888 by J.W. Kimbrell finds no remaining evidence of corner and positions the corner by proportion. No description of monument set. Old Book Survey Page 133, dated December 22, 1888 by J.W. Kimbrell describes using the monument but does not describe the type.

Old Book Survey Page 260, dated August 1890 by J.L. Curtis, ties the railroad track to this corner where he shows it falling 309 feet East and 605 feet South of the railroad track.

A right-of-way and track map for the Oregon-Washington Railroad and Navigation Company, dated June 30, 1916 shows the corner falling 309 feet East of Station 678+78.0 and 605 feet South of Station 685+58.0.

Survey Number 037-2006 by Rick Robinson positions the corner by retracement of the railroad track. No new monument set.

DESCRIPTION OF CORNER EVIDENCE FOUND:

I establish a position by first establishing stationing by retracement of the railroad and using distance intersection from the stations, as per the OWR&N right of way map to place the corner. This is the same methodology employed in Survey Number 037-2006. Position falls in an area under cultivation. I find no remaining evidence of the corner monument.

SEE SURVEY NUMBER 007-2017

DESCRIPTION OF MONUMENT AND ACCESSORIES I ESTABLISHED

TO PERPETUATE THE ORIGINAL LOCATION OF THIS CORNER:

At position determined by distance intersection from record railroad stations, I set a 5/8" x 30" iron pin with 2 1/2" brass cap, marked as shown below, 50 inches in the ground, from which:

NEW BEARING OBJECTS:

A 5/8" x 15" iron pin bears North 12°45'57" West, a distance of 368.81 feet, with 1 1/2" aluminum cap marked UNION COUNTY SURVEYORS RP 1. Pin falls approx 0.5 feet East of a railroad sign marked '13'.

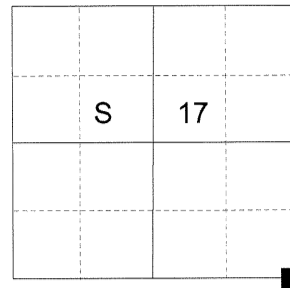
A 5/8" x 15" iron pin bears North 40°44'12" West, a distance of 335.38 feet, with 1 1/2" aluminum cap marked UNION COUNTY SURVEYORS RP 2. Pin falls on the East side of a log retaining structure on the West side of the railroad tracks.

A 5/8" x 15" iron pin bears North 68°52'30" West, a distance of 230.57 feet, with 1 1/2" aluminum cap marked UNION COUNTY SURVEYORS RP 3. Pin falls on the top of a bank on the East side of the railroad tracks.

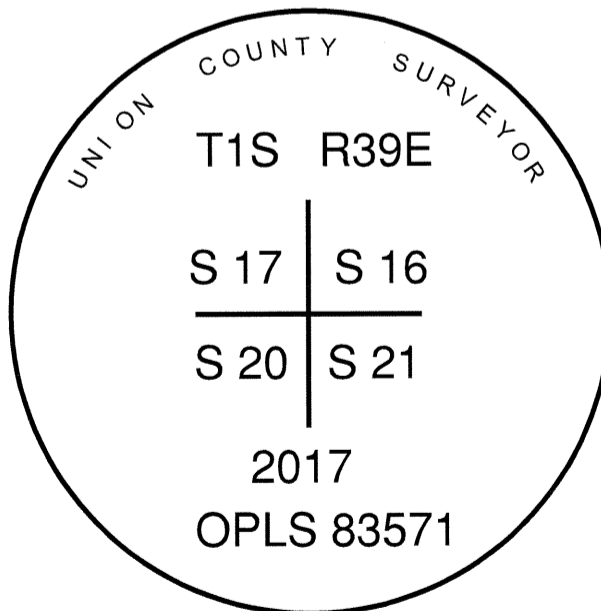
A 2 1/2" brass cap marked "IMBLER 1946" in concrete bears South 52°12'40" West, a distance of 750.98 feet.

Top of the brass cap is below grade approx. 20 inches. Corner falls in cultivated area and there is no suitable ground for durable accessory monuments nearby. I hereby certify that the corner was monumented March 23, 2017.

T 1 S R 39 E N-09



UNION COUNTY SURVEYOR	
Date Received	3/24/17
Date Filed	3/24/17
Filed By	<i>[Signature]</i>
File Number	001-2017R



REGISTERED PROFESSIONAL LAND SURVEYOR <hr/> OREGON June 2, 2010 JEFFREY S. HSU 83571
--

I used a RTK GPS in the establishment of the accessories. Basis of Bearings is as per Survey Number 007-2017.

Renewal Date: June 30, 2017

N-09

HORIZONTAL CONTROL DATA

UNION COUNTY, OREGON

OREGON STATE PLANE, NORTH ZONE (3601)

STA NAME: 2017001

SECTION CORNER COMMON TO SECTIONS 16, 17, 20 AND 21

TWP. 1 S. RGE. 39 E.

GEODETIC COORD: NAD 83(91)

DATE TIED: March 23, 2017

LAT: 45 ° 28 ' 16.60628 " N

SURVEYOR: RICK G. ROBINSON
OPLS 2219

LONG: 117 ° 57 ' 8.48514 " W

FIRM: BAGETT, GRIFFITH, & BLACKMAN
2006 ADAMS AVENUE
LAGRANDE, OR 97850
(541) 963-6092

SP. COOR: NAD 83(91)

N: 668218.891 INT FT.

E: 8855540.727 INT FT.

TYPE: GPS

THETA: 1 ° 48 ' 24.3100931 "

ORDER: SECOND CLASS: 1

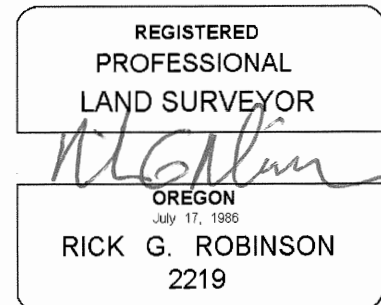
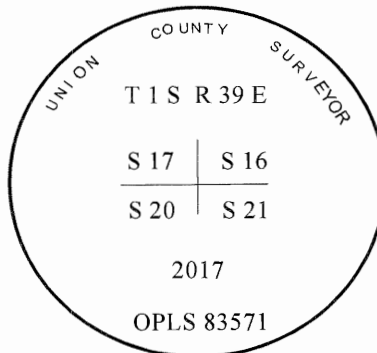
SCALE FACTOR: 0.9999085019

ELEV: 2711.03 US FT.

ELEV: DATUM: NGVD 29

COMMENTS:

5/8" iron pin with 2 1/2" brass cap marked
as shown, in farmed field, 20" below surface



Renewal Date: December 31, 2018

1 METER = 3.2808333333... US FEET = 39.37 INCHES

1 METER = 3.280839895 INT'L FEET OR 1 INCH = 2.54 CM

TO CALCULATE ELEVATION FACTOR (IN THE NORTH AMERICAN CONTINENT)

DIVIDE 20,906,000 BY (20,906,000 + ELLIPSOID ELEV. IN FEET)