

**UNION COUNTY SURVEYOR**

**CERTIFIED RECORD OF LAND CORNER MONUMENTATION**

**HISTORY OF ORIGINAL CORNER ESTABLISHMENT:**

Corner originally established by D. Thompson, under GLO contract Number 103, dated July 20, 1863. Surveyor General record states:

Set post corner to sections 27, 28, 33 & 34 from which:

A Pine 30 ins. Diam Bears N34°W, 62 lks dist. A Pine 24 ins. Diam Bears N48°E, 384 lks dist. A Pine 40 ins. Diam bears S23°E, 77 lks dist  
A Pine 24 ins. Diam Bears S45°W, 64 lks dist

Survey number 006-2002 calls finding a ½" drive pin with guard post. Also found a stump hole N48°W 40.9 ft. and a stump hole S23°E 50.8 ft.

Survey Number 018-2005 calls finding the ½" drive pin as per survey number 006-2002.

No record of subsequent monumentation found in Union County survey records.

**DESCRIPTION OF CORNER EVIDENCE FOUND:**

Found ½" drive pin loose on ground.

**DESCRIPTION OF MONUMENT AND ACCESSORIES I ESTABLISHED TO PERPETUATE THE ORIGINAL LOCATION OF THIS CORNER:**

At record position as determined by survey number 018-2005, I set a 2½" x 30" aluminum pipe with aluminum cap marked as shown below, 27" in the ground from which:

**NEW BEARING TREES and OBJECTS:**

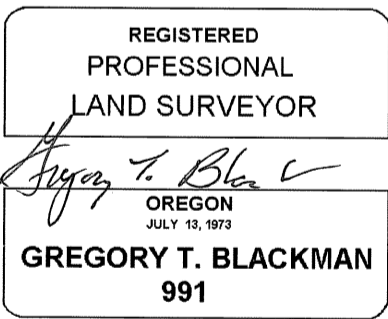
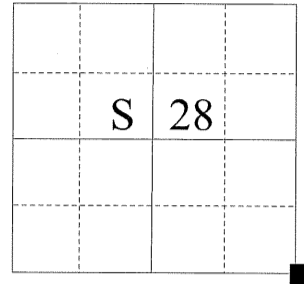
A 5 inch diameter Ponderosa Pine marked "X BT" bears North 77° East, a distance of 50.10 feet.  
A 10 inch diameter Ponderosa Pine marked "T1S R38E S34 BT" bears South 57° East, a distance of 17.10 feet.  
A 4"x2" channel iron fence post bears South 16° West, a distance of 2.40 feet (falls in East-West fence line).  
A 9 inch diameter Ponderosa Pine marked "T1S R38E S28 BT" bears North 63° West, a distance of 51.70 feet.

Set ½" drive shaft inside aluminum pipe.

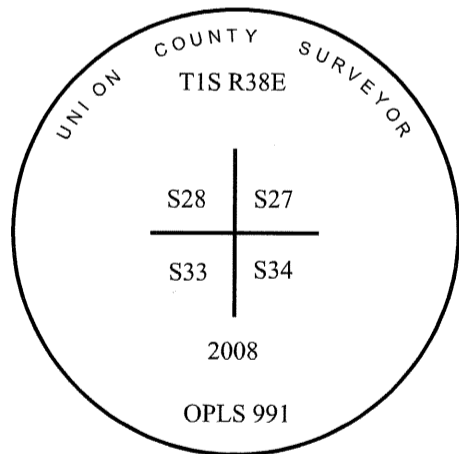
I hereby certify that the corner was monumented on October 9, 2008.

Witness: Jeff Hsu, Gregory T. Blackman Jr.

T 1 S R 38 E V - 13



Renewal Date: Dec. 31, 2009



I used a steel tape and magnetic compass in the establishment of the new accessories. I used 18° East magnetic declination. The distances to the bearing trees are to a 50d spike driven in the right side at the root crown. I attached a brass washer marked "OPLS 991 to the BT blaze. The distance to the channel iron is to the center of the post.

**UNION COUNTY SURVEYOR**

Date Received 10/14/08

Date Filed 10/16/08

Filed By R. Robinson, Deputy

File Number 017-2008R