

CERTIFIED RECORD OF LAND CORNER MONUMENTATION

HISTORY OF ORIGINAL CORNER ESTABLISHMENT:

Corner not previously established.

No record of subsequent monumentation found in UNION COUNTY survey records.

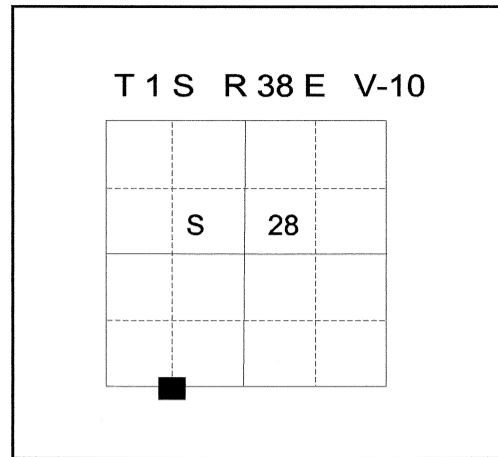
DESCRIPTION OF CORNER EVIDENCE FOUND:

None.

See Survey Number 017-2011.

DESCRIPTION OF MONUMENT AND ACCESSORIES I ESTABLISHED TO PERPETUATE THE ORIGINAL LOCATION OF THIS CORNER:

At the position determined by Survey: I set a 5/8"x 30" rebar with 2 1/2" Aluminum cap marked as shown below, 27" in the ground, from which;



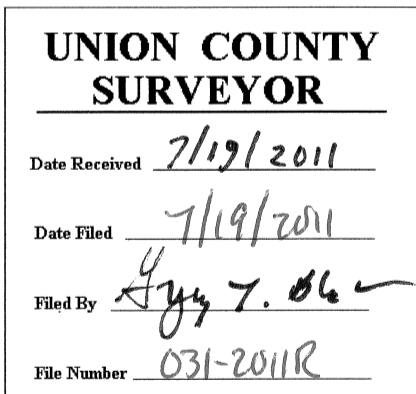
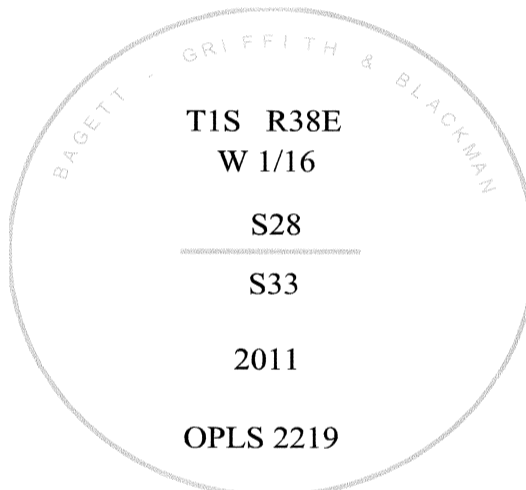
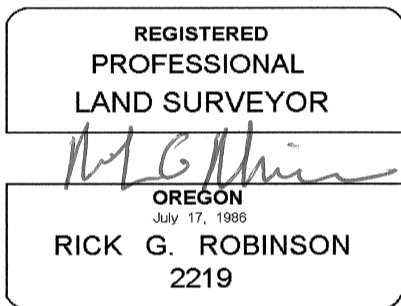
NEW BEARING TREES:

A 11" Douglas Fir bears North 66° East, a distance of 9.45 feet, marked W1/16 S28 BT.

A 12" Douglas Fir bears South 48° West, a distance of 31.28 feet, marked W1/16 S33 BT.

I hereby certify that the corner was monumented on June 15, 2011.

Witness: Gregory T. Blackman Jr. and Jeff Hsu



I used a steel tape and magnetic compass in the establishment of new accessories. The magnetic declination used was 16° East. The distance to the bearing trees are to a 50d spike driven on the right side of the tree at the root crown. I attached a brass washer marked OPLS 2219 to the BT blaze.