

**CERTIFIED RECORD OF LAND CORNER MONUMENTATION**

**HISTORY OF ORIGINAL CORNER ESTABLISHMENT:**

Corner not previously established.

No record of subsequent monumentation found in UNION COUNTY survey records.

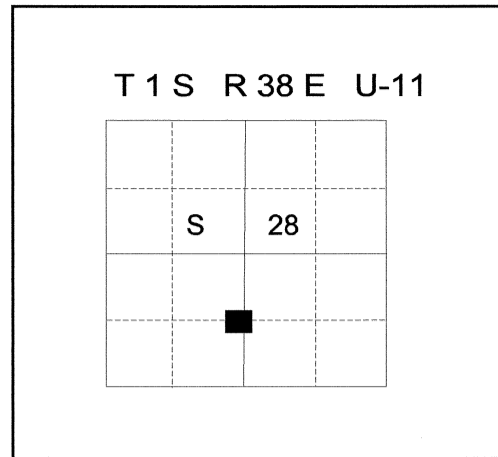
**DESCRIPTION OF CORNER EVIDENCE FOUND:**

None.

See Survey Number 017-2011.

**DESCRIPTION OF MONUMENT AND ACCESSORIES I ESTABLISHED TO PERPETUATE THE ORIGINAL LOCATION OF THIS CORNER:**

At the position determined by Survey: I set a 5/8"x 30" rebar with 2 1/2" Aluminum cap marked as shown below, 30" in the ground, from which;



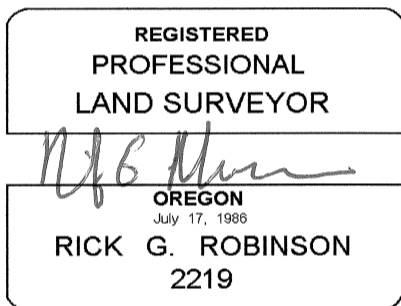
**NEW BEARING TREES:**

A 14" Douglas Fir bears South 26° West, a distance of 19.00 feet, marked CS1/16 S28 BT.

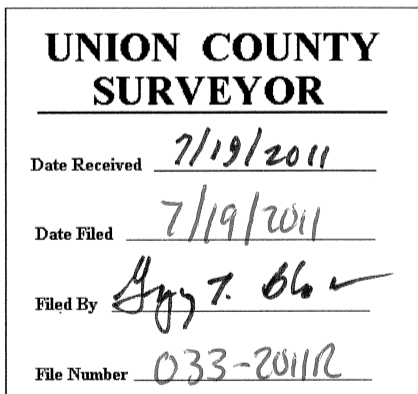
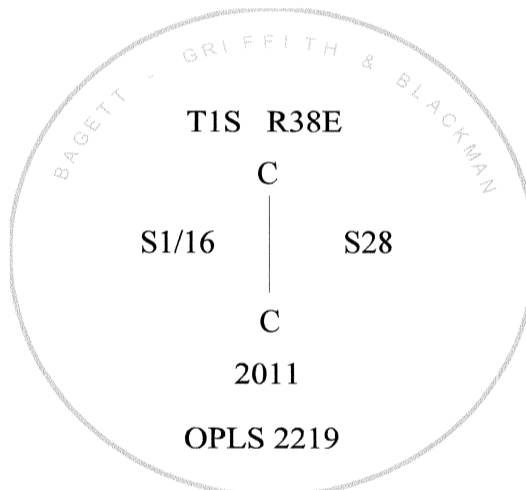
A 14" Western Larch bears North 38° West, a distance of 18.40 feet, marked CS1/16 S28 BT.

I hereby certify that the corner was monumented on June 16, 2011.

Witness: Gregory T. Blackman Jr. and Jeff Hsu



Renewal Date: December 31, 2012



I used a steel tape and magnetic compass in the establishment of new accessories. The magnetic declination used was 16° East. The distance to the bearing trees are to a 50d spike driven on the right side of the tree at the root crown. I attached a brass washer marked OPLS 2219 to the BT blaze.