

UNION COUNTY SURVEYOR

CERTIFIED RECORD OF LAND CORNER MONUMENTATION

HISTORY OF ORIGINAL CORNER ESTABLISHMENT:

Corner originally established by D. Thompson, under GLO contract Number 103, dated January 20, 1863. Surveyor General record states:

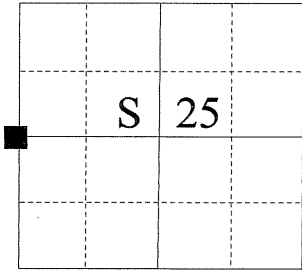
Set post for 1/4 sec in mound of earth with charred stake pits trench as per instructions.

No record of subsequent monumentation found in Union county survey records.

DESCRIPTION OF CORNER EVIDENCE FOUND:

No original evidence found.

T 1 S R 38 E T-21



See Survey #003-2004

DESCRIPTION OF MONUMENT AND ACCESSORIES I ESTABLISHED

TO PERPETUATE THE ORIGINAL LOCATION OF THIS CORNER:

At the point determined by survey #14-70 I set a 2½" x 30" aluminum pipe with aluminum cap marked as shown below, 30" in the ground from which:

NEW BEARING OBJECTS:

A 5/8" x 30" rebar with 1 ½" aluminum cap bears N82°54'E, a distance of 17.09 feet, marked NE RP.

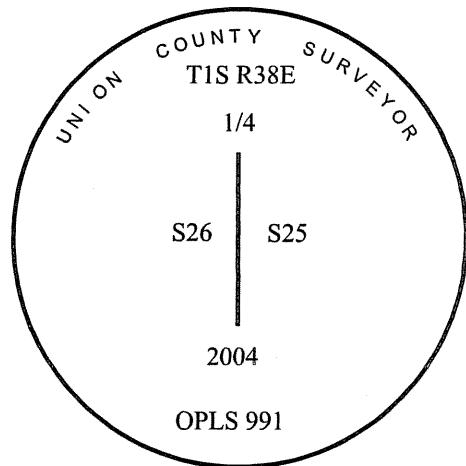
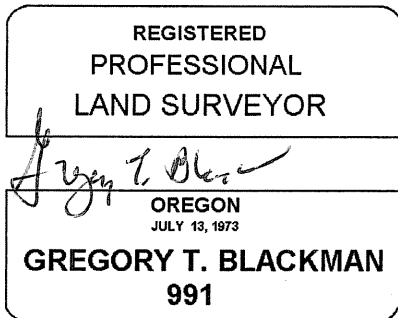
A 4" steel pipe fence post bears S42°13'E, a distance of 1.75 feet, marked SE RP".

A 5/8" x 30" rebar with 1 ½" aluminum cap bears S41°26'W, a distance of 27.28 feet, SW RP.

A 5/8" x 30" rebar with 1 ½" aluminum cap bears N75°51'W, a distance of 11.40 feet, NW RP.

I hereby certify that the corner was monumented on March 18, 2004.

Witness: Gregory T. Blackman Jr.



UNION COUNTY SURVEYOR

Date Received 12/30/04

Date Filed 12/30/04

Filed By R. ROBINSON, DEPUTY

File Number 025-2004R

I used a Leica GPS-500 receiver in the establishment of the new accessories. The basis of bearings is the same as that on survey number 003-2004. The distances are to the center of a 5/8" rebar with a 1 ½" aluminum cap and corner of 4" pipe fence post.

HORIZONTAL CONTROL DATA
UNION COUNTY, OREGON
OREGON STATE PLANE, NORTH ZONE (3601)

STA NAME: 200905

1/4 SECTION CORNER COMMON TO SECTIONS: 25 and 26

TWP. 1 S. RGE. 38 E.

GEODETIC COORD: NAD 83(91)

DATE TIED: February 12, 2009

LAT: 45 ° 26 ' 57.86380 " N

SURVEYOR: RICK G. ROBINSON
OPLS 2219

LONG: 118 ° 0 ' 51.60033 " W

FIRM: BAGETT, GRIFFITH, & BLACKMAN
2006 ADAMS AVENUE
LAGRANDE, OR 97850
(541) 963-6092

SP. COOR: NAD 83(91)

N: 659752.599 INT FT.

E: 8839894.887 INT FT.

TYPE: GPS

THETA: 1 ° 45 ' 46.0799174 "

ORDER: SECOND CLASS: 1

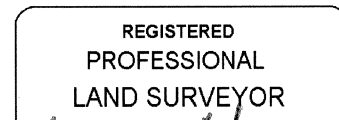
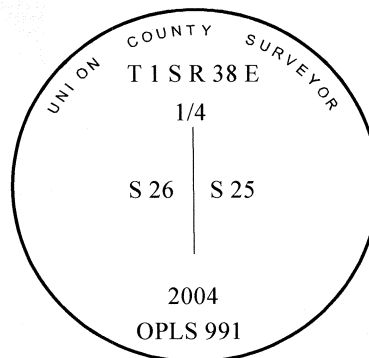
SCALE FACTOR: 0.9999065605

ELEV: 2714.14 US FT.

ELEV: DATUM: NGVD 29

COMMENTS:

Corner is 2 1/2"x30" aluminum pipe with
2 1/2" aluminum cap marked as shown:
Monument is set flush with the ground.



Rick G. Robinson
OREGON
July 17, 1986
RICK G. ROBINSON
2219

Renewal Date: December 31, 2010

1 METER = 3.280833333... US FEET = 39.37 INCHES

1 METER = 3.280839895 INT'L FEET OR 1 INCH = 2.54 CM

TO CALCULATE ELEVATION FACTOR (IN THE NORTH AMERICAN CONTINENT)

DIVIDE 20,906,000 BY (20,906,000 + ELLIPSOID ELEV. IN FEET)