

**CERTIFIED RECORD OF LAND CORNER MONUMENTATION**

**HISTORY OF ORIGINAL CORNER ESTABLISHMENT:**

Corner not previously established.

No record of subsequent monumentation found in UNION COUNTY survey records.

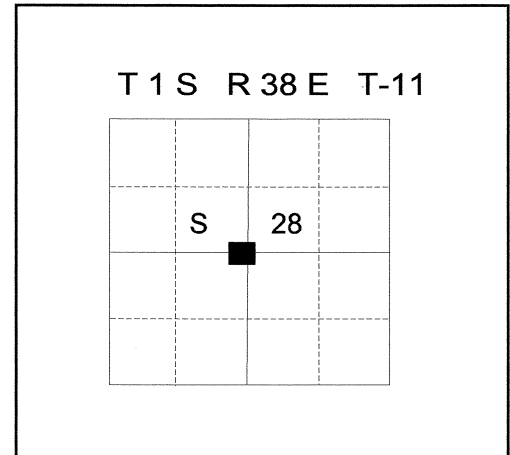
**DESCRIPTION OF CORNER EVIDENCE FOUND:**

None.

See Survey Number 017-2011.

**DESCRIPTION OF MONUMENT AND ACCESSORIES I ESTABLISHED TO PERPETUATE THE ORIGINAL LOCATION OF THIS CORNER:**

At the position determined by Survey: I set a 1"x 30" pipe with 2 1/2" Brass cap marked as shown below, 28" in the ground, from which;



**NEW BEARING TREES:**

A 9" Ponderosa Pine bears North 27° East, a distance of 21.26 feet, marked C1/4 S28 BT.

A 8" Douglas Fir bears South 47° East, a distance of 32.15 feet, marked C1/4 S28 BT.

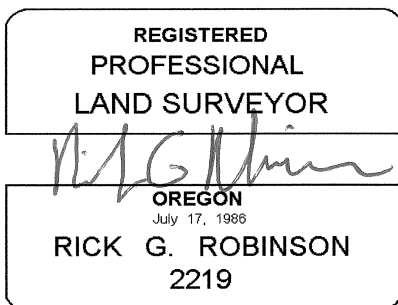
A 12" Ponderosa Pine bears South 63° West, a distance of 37.13 feet, marked C1/4 S28 BT.

A 14" Ponderosa Pine bears North 38° West, a distance of 14.37 feet, marked C1/4 S28 BT.

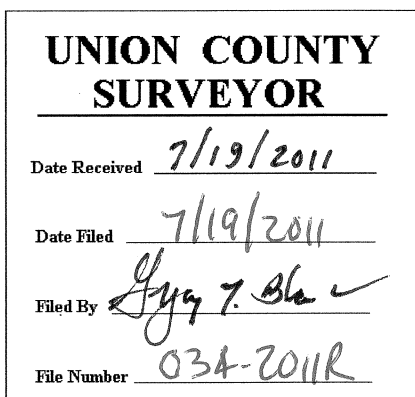
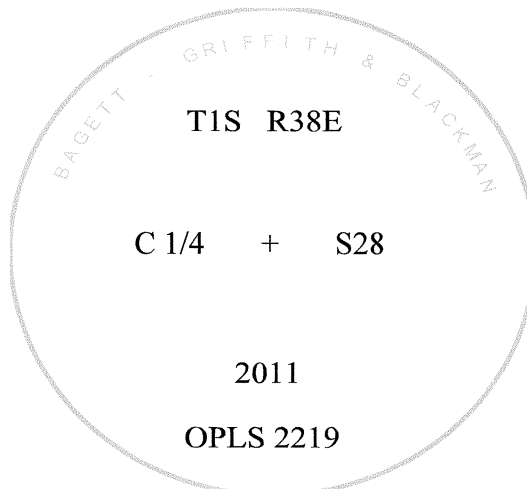
Corner falls approximately 17 feet East of dirt roadway.

I hereby certify that the corner was monumented on June 16, 2011.

Witness: Gregory T. Blackman Jr. and Jeff Hsu



Renewal Date: December 31, 2012



I used a steel tape and magnetic compass in the establishment of new accessories. The magnetic declination used was 16° East. The distance to the bearing trees are to a 50d spike driven on the right side of the tree at the root crown. The distance to the Southwest Bearing Tree is to a 50d spike in the Left side of tree. I attached a brass washer marked OPLS 2219 to the BT blaze.