

UNION COUNTY SURVEYOR

CERTIFIED RECORD OF LAND CORNER MONUMENTATION

HISTORY OF ORIGINAL CORNER ESTABLISHMENT:

Corner originally established by D. Thompson under GLO contract Number 103, dated January 20, 1863. Surveyor General record states:

Set post for corner to secs 14, 13, 23, 24 in mound of earth with charred stake pits trench as per instructions.

No record of subsequent monumentation found in Union County survey records.

DESCRIPTION OF CORNER EVIDENCE FOUND:

No original evidence found.

See Survey #003-2004

DESCRIPTION OF MONUMENT AND ACCESSORIES I ESTABLISHED

TO PERPETUATE THE ORIGINAL LOCATION OF THIS CORNER:

At proportioned position 15" below ground I set a 2½" x 30" aluminum pipe with aluminum cap marked as shown below, from which:

NEW BEARING OBJECTS:

A 5/8" x 30" rebar with 1 ½" aluminum cap bears N4°37'W, a distance of 8.02 feet, marked "BGB SURVEY MARKER NW RP".

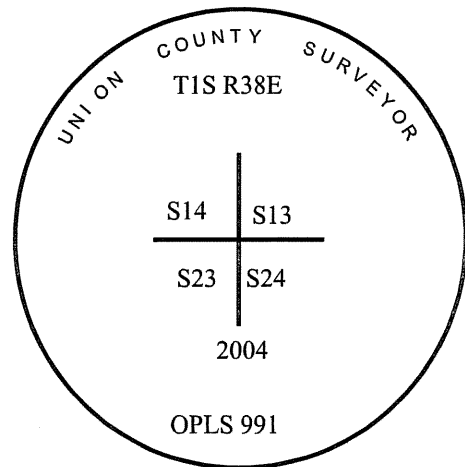
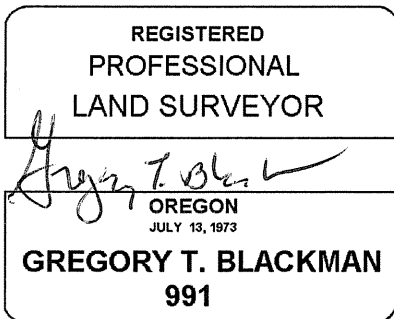
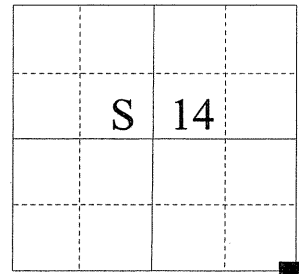
A 5/8" x 30" rebar with 1 ½" aluminum cap bears S25°10'E, a distance of 29.64 feet, marked SE RP .

Northwest corner of existing pump house 1' above ground that bears south 32°57'W, a distance of 22.77 feet.

A 5/8" x 30" rebar with 1 ½" aluminum cap bears N87°25'W, a distance of 17.72 feet, marked "BGB SURVEY MARKER NW RP".

I hereby certify that the corner was monumented on March 18, 2004.
Witness: Gregory T. Blackman Jr.

T 1 S R 38 E N - 21



UNION COUNTY SURVEYOR
Date Received 12/30/04
Date Filed 12/30/04
Filed By R. ROBINSON, DEPUTY
File Number 021-2004R

I used a GPS-500 receiver in the establishment of the new accessories. The basis of bearings is the same as that on survey number 003-2004. The distances are to the center of a 5/8" rebar with a 1 ½" aluminum cap. And 4" irrigation riser.

N-21

HORIZONTAL CONTROL DATA

UNION COUNTY, OREGON

OREGON STATE PLANE, NORTH ZONE (3601)

STA NAME: 200713

SECTION CORNER COMMON TO SECTIONS: 13, 14, 23 and 24

TWP. 1 S. RGE. 38 E.

GEODETIC COORD: NAD 83(91)

DATE TIED: February 27, 2007

LAT: 45 ° 28 ' 16.70583 " N

SURVEYOR: RICK G. ROBINSON
OPLS 2219

LONG: 118 ° 0 ' 52.18218 " W

FIRM: BAGETT, GRIFFITH, & BLACKMAN
2006 ADAMS AVENUE
LAGRANDE, OR 97850
(541) 963-6092

SP. COOR: NAD 83(91)

N: 667732.520 INT FT.

E: 8839607.813 INT FT.

TYPE: GPS

THETA: 1 ° 45 ' 45.6672831 "

ORDER: SECOND CLASS: 1

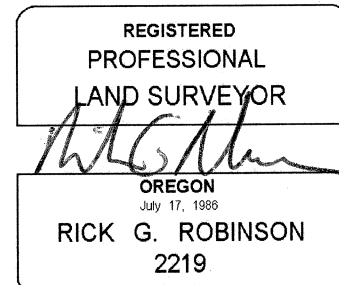
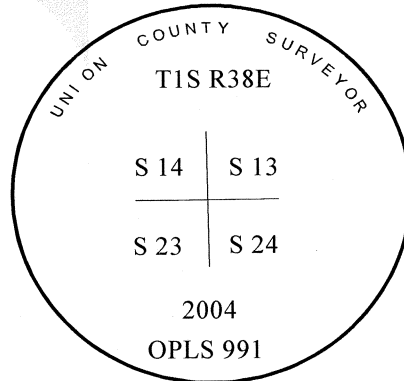
SCALE FACTOR: 0.9999085044

ELEV: 2693.92 US FT.

ELEV: DATUM: NGVD 29

COMMENTS:

Corner is 2 1/2"x30" aluminum pipe with
2 1/2" aluminum cap marked as shown:



Renewal Date: December 31, 2008

1 METER = 3.2808333333... US FEET = 39.37 INCHES

1 METER = 3.280839895 INT'L FEET OR 1 INCH = 2.54 CM

TO CALCULATE ELEVATION FACTOR (IN THE NORTH AMERICAN CONTINENT)

DIVIDE 20,906,000 BY (20,906,000 + ELLIPSOID ELEV. IN FEET)