

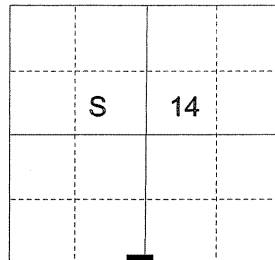
UNION COUNTY SURVEYOR

CERTIFIED RECORD OF LAND CORNER MONUMENTATION

HISTORY OF ORIGINAL CORNER ESTABLISHMENT:

Corner originally monumented by David P. Thompson on GLO Contract number 103 dated January 20, 1863. Surveyor

T 1 S R 38 E N19



General record states:

Set post for 1/4 sec in mound of earth with charred stake pits trench as per instructions.

No record of subsequent monumentation found in UNION COUNTY survey records.

DESCRIPTION OF CORNER EVIDENCE FOUND:

No evidence of the original corner or it's accessories were found in Union county survey records.

See Survey Number 003-2004.

DESCRIPTION OF MONUMENT AND ACCESSORIES I ESTABLISHED TO PERPETUATE THE ORIGINAL LOCATION OF THIS CORNER:

At the proportioned position, I set a 2 1/2" X 30" aluminum pipe marked as shown 38" in the ground, from which;

NEW BEARING OBJECTS:

A 5/8"x30" iron pin with a 1 1/2" aluminum cap marked bears N 89°28'E, a distance of 46.34 feet NE RP

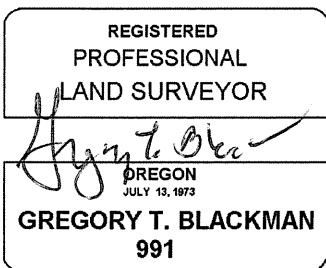
A 5/8"x30" iron pin with a 1 1/2" aluminum cap bears S 72°30'E, a distance of 39.98 feet marked SE RP

A 5/8"x30" iron pin with a 1 1/2" aluminum cap bears S 31°31'W, a distance of 52.56 feet marked SW RP

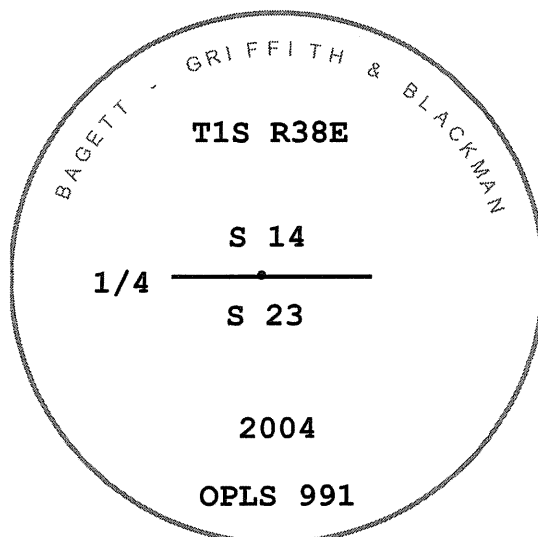
A 5/8"x30" iron pin with a 1 1/2" aluminum cap bears N 88°41'W, a distance of 30.04 feet marked NW RP

I hereby certify that the corner was monumented on February 3, 2004

Note: irrigation ditch is approximately 16 feet South of monument, the monument falls in a plowed field and is set 8 inches under the surface. Witness: Ty Robinson, and Gregory T. Blackman Jr.



Renewal Date: December 31, 2005



UNION COUNTY SURVEYOR

Date Received 12/30/04

Date Filed 12/30/04

Filed By R. Robinson, Deputy

File Number 022-2004R

I used a Leica GPS-500 Receiver in the establishment of new accessories. The basis of bearings is the same as that on Survey number 003-2004. The distances are to the center of a 5/8" rebar with a 1 1/2" aluminum cap.

HORIZONTAL CONTROL DATA

UNION COUNTY, OREGON

OREGON STATE PLANE, NORTH ZONE (3601)

STA NAME: 200712

1/4 SECTION CORNER COMMON TO SECTIONS 14 and 23

TWP. 1 S. RGE. 38 E.

GEODETIC COORD: NAD 83(91)

DATE TIED: February 27, 2007

LAT: 45 ° 28 ' 16.53034 " N

SURVEYOR: RICK G. ROBINSON
OPLS 2219

LONG: 118 ° 1 ' 28.99798 " W

FIRM: BAGETT, GRIFFITH, & BLACKMAN
2006 Adams Avenue
La Grande, OR 97850
(541) 963-6092

SP. COOR: NAD 83(91)

N: 667634.225 INT FT.

E: 8836986.152 INT FT.

TYPE: GPS

THETA: 1 ° 45 ' 19.5580286 "

ORDER: SECOND CLASS: 1

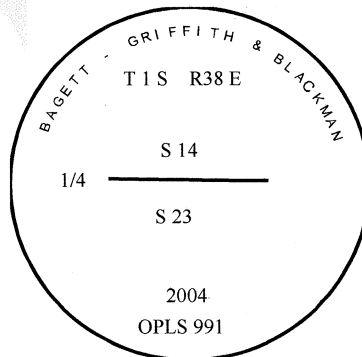
SCALE FACTOR: 0.9999084999

ELEV: 2699.28 US FT.

ELEV: DATUM: NGVD 29

COMMENTS:

Corner is a 2 1/2"x30" aluminum pipe
with 2 1/2" aluminum cap marked:



Renewal Date: December 31, 2008

1 METER = 3.280833333... US FEET = 39.37 INCHES

1 METER = 3.280839895 INT'L FEET OR 1 INCH = 2.54 CM

TO CALCULATE ELEVATION FACTOR (IN THE NORTH AMERICAN CONTINENT)

DIVIDE 20,906,000 BY (20,906,000 + ELLIPSOID ELEV. IN FEET)