

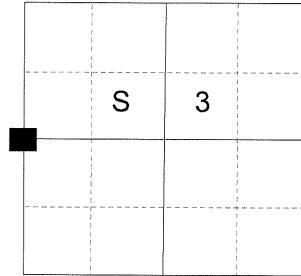
CERTIFIED RECORD OF LAND CORNER MONUMENTATION

HISTORY OF ORIGINAL CORNER ESTABLISHED:

Corner originally established by GLO Contract dated Sept. 30, 1863, executed by David Thompson. Surveyor General field notes state: Set post for ¼ Sec corner from which:
A Pine 18 in. diam bears S85°W 360 lks dist
A Pine 18 in. diam bears N3°E 540 lks dist

Perpetuation of corner found by James Voelz in Survey Numbers 25-71 and 84-74 where he states that he finds a 1/4 cor. stone.

T 1 S R 38 E C-13



DESCRIPTION OF CORNER EVIDENCE FOUND:

Found a 20x18x6" stone with chiseled '4' visible, firmly set, buried 6" below grade on the North side of a fence corner from which fences bears South, East and West.

SEE SURVEY NUMBER 036-2018

DESCRIPTION OF MONUMENT AND ACCESSORIES I ESTABLISHED TO PERPETUATE THE ORIGINAL LOCATION OF THIS CORNER:

At stone position, I set a 2½x30" aluminum pipe with a 2½" aluminum cap marked as shown, 26" in the ground, from which:

NEW BEARING OBJECT:

A 5/8"x30" iron pin bears North 3°23' West, a distance of 13.55 ft., marked BGB SURVEY MARKER NRP.

A 5/8"x30" iron pin bears North 86°12' East, a distance of 31.32 ft., marked BGB SURVEY MARKER ERP.

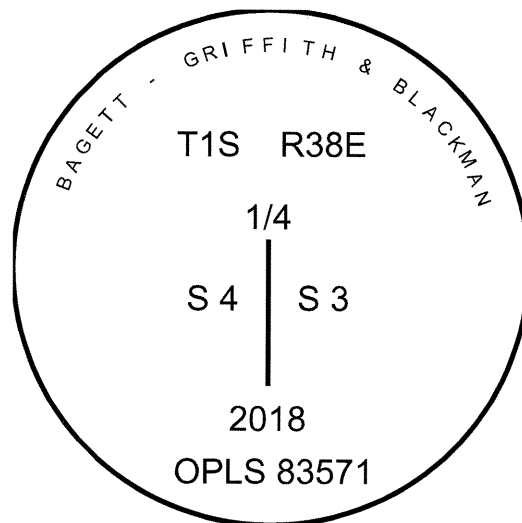
A 5/8"x30" iron pin bears South 1°46' West, a distance of 26.29 ft., marked BGB SURVEY MARKER SRP.

A 5/8"x30" iron pin bears South 89°32' West, a distance of 36.98 ft., marked BGB SURVEY MARKER WRP.

Stone buried upside down along North side of monument.

I hereby certify that the corner was monumented on September 11, 2018.

Witness: Ryan Skeen



UNION COUNTY SURVEYOR
Date Received 9/20/18
Date Filed 9/20/18
Filed By Nick G. Miller
File Number 058-2018R

I used a RTK GPS in the establishment of the accessories. Basis of bearing is as per Survey Number 036-2018. Bearings and distances are to the center of the aluminum caps.

HORIZONTAL CONTROL DATA

UNION COUNTY, OREGON

OREGON STATE PLANE, NORTH ZONE (3601)

STA NAME: 2018032

1/4 SECTION CORNER COMMON TO SECTIONS 3 AND 4

TWP. 1 S RGE. 38 E.

GEODETIC COORD: NAD 83(91)

DATE TIED: September 11, 2018

LAT: 45 ° 30 ' 26.72015 " N

SURVEYOR: RICK G. ROBINSON
OPLS 2219

LONG: 118 ° 3 ' 20.87407 " W

FIRM: BAGETT, GRIFFITH, & BLACKMAN
2006 ADAMS AVENUE
LAGRANDE, OR 97850
(541) 963-6092

SP. COOR: NAD 83(91)

N: 680570.997 INT FT.

E: 8828618.865 INT FT.

TYPE: GPS

THETA: 1 ° 44 ' 0.21707194 "

ORDER: SECOND CLASS: 1

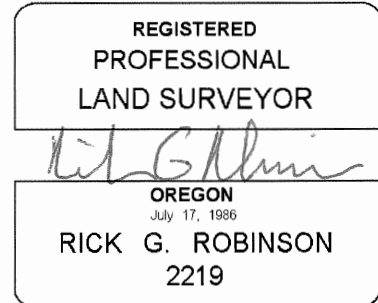
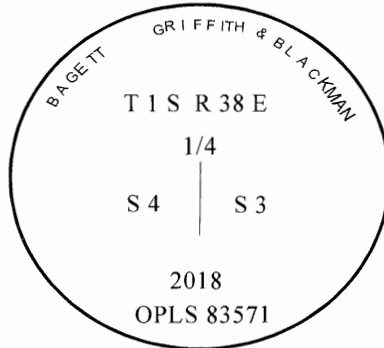
SCALE FACTOR: 0.9999120299

ELEV: 2886.47 US FT.

ELEV: DATUM: NGVD 29

COMMENTS:

2 1/2" aluminum cap on aluminum pipe set in North end of fence line, with cap marked as shown.



Renewal Date: December 31, 2018

1 METER = 3.2808333333... US FEET = 39.37 INCHES

1 METER = 3.280839895 INT'L FEET OR 1 INCH = 2.54 CM

TO CALCULATE ELEVATION FACTOR (IN THE NORTH AMERICAN CONTINENT)

DIVIDE 20,906,000 BY (20,906,000 + ELLIPSOID ELEV. IN FEET)