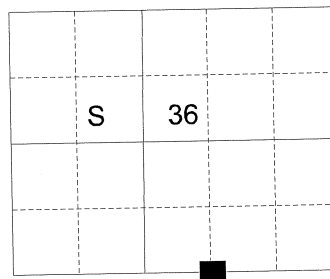


CERTIFIED RECORD OF LAND CORNER MONUMENTATION

HISTORY OF ORIGINAL CORNER ESTABLISHMENT:

Corner not previously established

T 1 S R 35 E Z - 24



DESCRIPTION OF CORNER EVIDENCE FOUND:

None.

See Survey Number 015-2011.

DESCRIPTION OF MONUMENT AND ACCESSORIES I ESTABLISHED TO PERPETUATE THE ORIGINAL LOCATION OF THIS CORNER:

At the position determined by survey, I set a 5/8" x 30" iron pin with 2 1/2" aluminum cap marked as shown below, 30" in the ground, from which:

BEARING OBJECTS:

A 15 inch Western Larch bears North 5° East, a distance of 51.81 feet, marked LOT 15 CC BT.

A 16 inch Western Larch bears North 54° West, a distance of 70.00 feet, marked LOT 14 CC BT.

I set a steel fencepost 1 foot North of monument.

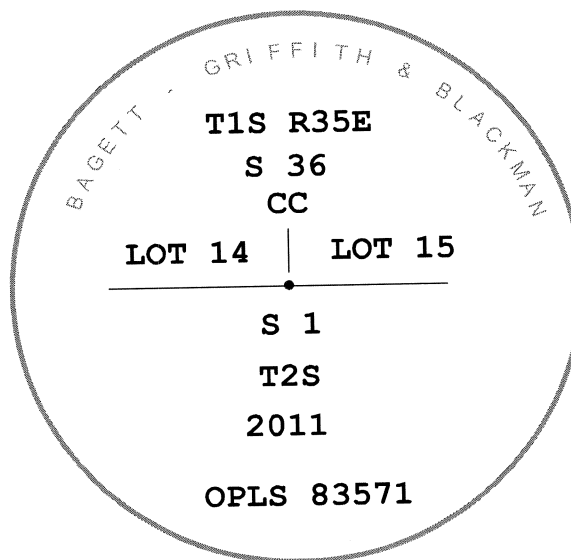
I hereby certify that the corner was monumented on May 19, 2011.

Witness: Gregory T. Blackman Jr.

REGISTERED
PROFESSIONAL
LAND SURVEYOR

Jeffery S. Hsu
OREGON
June 2, 2010
JEFFERY S. HSU
83571

Renewal Date: June 30, 2011



UNION COUNTY SURVEYOR
Date Received 6/6/11
Date Filed 6/22/11
Filed By R. ROBINSON, DEPUTY
File Number 004-2011R

I used a magnetic compass and steel tape in the establishment of the accessories. Magnetic declination used was 16° East. The distances are to a 60d spike in the right hand side of the trees and bearings are to a brass washer marked OPLS 83571 in the upper portion of the BT blaze.