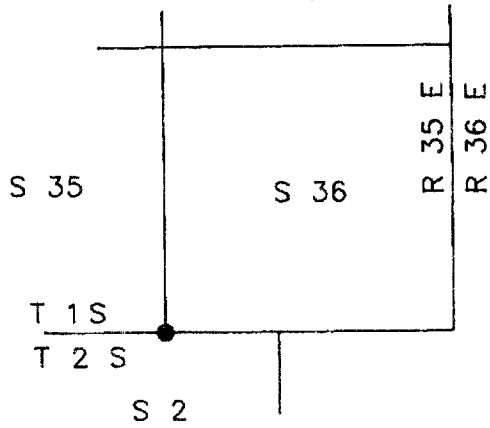


CERTIFIED RECORD OF LAND CORNER MONUMENTATION

CORNER DIAGRAM

Section 36
 Township 1 S.
 Range 35 E.
 County Union



HISTORY OF PREVIOUS SURVEYS

G.L.O. survey by Jacob Cooper in 1881.
 Survey for Huff, Taylor and Corbet, June 9, 1891
 (County records Old Book 1, pg. 312)

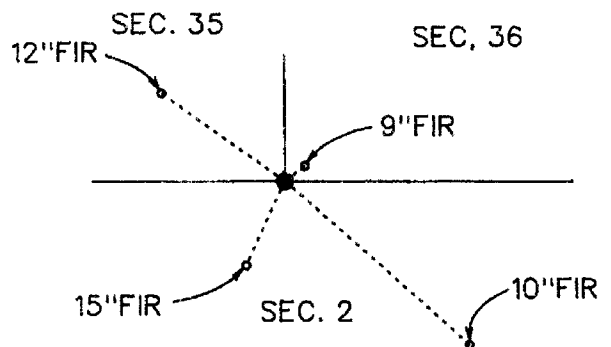
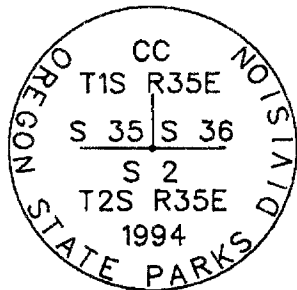
CORNER EVIDENCE FOUND

None

MONUMENT SET (DESCRIPTION AND PROCEDURES)

Set 5/8"x30" iron rod with 2" aluminum cap as shown, established by single proportion along the Township Line (allowing for curvature) between the NE corner of sec. 2, T 2 S, and the SW corner of Sec. 34, T 1 S. See County Survey Number 044-1994.

MONUMENT DETAIL AND SKETCH



NEW ACCESSORIES

9" Fir bears N 52° 00'E 4.3 feet, scribed "S 36 BT"
 12" Fir bears N 53° 50'W 31.7 feet, scribed "S 35 BT"
 15" Fir bears S 24° 40'W 19.5 feet, scribed "S 2 BT"
 10" Fir bears S 48° 20'E 51.4 feet, scribed "S 2 BT"
 BT's are marked with yellow aluminum tags

COMMENTS

Did not use compass, bearings are based on County Survey Number 044-1994

SURVEYOR'S CERTIFICATION

I hereby certify that the corner point described hereon was perpetuated by me on June 22, 1994.
 Witnesses:
 Dean Timmerman and Mike Huck

UNION COUNTY SURVEYOR
 Date Received 11/25/94
 Date Filed 12/31/94
 By Russell T. Pinard
 File No. 165-1994R

OREGON STATE PARKS
 1115 COMMERCIAL ST. NE
 SALEM, OR 97310-1001
 (503) 378-6821

REGISTERED PROFESSIONAL LAND SURVEYOR

Russell T. Pinard

OREGON
 JULY 16, 1971
 RUSSELL T. PINARD
 958

expires 12-31-94

CERTIFIED RECORD OF LAND CORNER MONUMENTATION

HISTORY OF ORIGINAL CORNER ESTABLISHED:

Corner originally established under GLO Contract No. 397, dated July 1, 1881, executed by Jacob Cooper. Surveyor General field notes state:

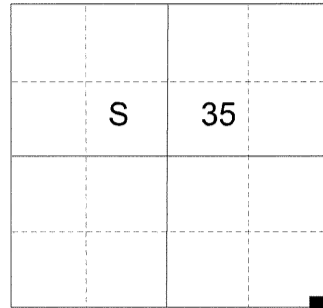
Set post 4 ½ ft. long, 4 ins. square, 2 ft. in the ground, in dense thicket of black pine.

A pine 9 ins. diam. bears S5°W, 22 lks. dist. marked T2S R35E S2 BT.

A pine 13 ins. diam. bears N2°W, 12 lks. dist. marked T1S R35E S35 BT.

A pine 9 ins. diam. bears N82°E, 28 lks. dist. marked T1S R35E S36 BT.

T 1 S R 35 E Z-21



Corner monumented at proportionate position by Russell Pinard in Survey S-124-B. Union County Monumentation record states: Set 5/8" x 30" iron rod with 2" aluminum cap as shown, established by single proportion along the Township Line.

New accessories:

9" Fir bears N52°00'E 4.3 feet, scribed S36 BT.

12" Fir bears N53°50'W 31.7 feet, scribed S35 BT.

15" Fir bears S24°40'W 19.5 feet, scribed S2 BT.

10" Fir bears S48°20'E 51.4 feet, scribed S2 BT.

DESCRIPTION OF CORNER EVIDENCE FOUND:

Found 5/8" iron pin with 2 ½" aluminum cap marked as shown below, 4" above ground, from which:

A 10" stump bears North 52° East, a distance of 4.3 feet.

A 14" fir stump bears South 48° East, a distance of 51.4 feet.

A dead and downed white fir bears South 24° West, a distance of 19.5 feet, with healed blaze.

A 14" stump bears North 54° West, a distance of 31.7 feet.

SEE SURVEY NUMBER 043-2018

DESCRIPTION OF MONUMENT AND ACCESSORIES I ESTABLISHED TO PERPETUATE THE ORIGINAL LOCATION OF THIS CORNER:

From the iron pin monument,

NEW BEARING OBJECTS:

An 5" White Fir bears North 20° East, a distance of 6.05 feet, marked T1S R35E S36 BT.

A 4" Western Larch bears South 36° East, a distance of 7.65 feet, marked T2S R35E S2 BT.

A 3" Douglas Fir bears South 40° West, a distance of 18.65 feet, marked X BT.

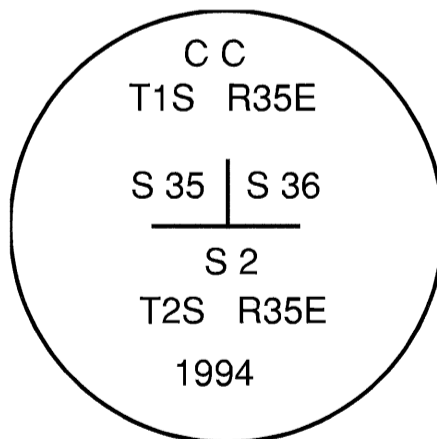
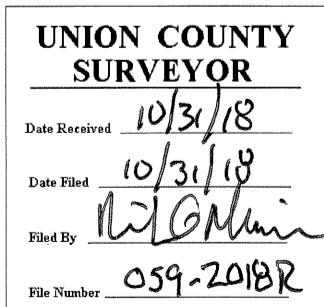
A 3" Douglas Fir bears North 31° West, a distance of 6.70 feet, marked X BT.

I certify this corner was perpetuated October 9, 2018.

Witness: Kyle Tucker



Renewal Date: June 30, 2019



I used a steel tape and magnetic compass in the establishment of the new accessories. I used 13° East declination. The distances are to a 60d spike driven into the side of the root crown of the bearing trees. A brass washer marked OPLS 83571 is attached to the BT blaze of the new bearing trees.

HORIZONTAL CONTROL DATA

UNION COUNTY, OREGON

OREGON STATE PLANE, NORTH ZONE (3601)

STA NAME: 2018036

SECTION CORNER COMMON TO SECTIONS 35 AND 36 ONLY

TWP. 1 S RGE. 35 E.

GEODETIC COORD: NAD 83(91)

DATE TIED: October 9, 2018

LAT: 45 ° 25 ' 44.46363 " N

SURVEYOR: RICK G. ROBINSON
OPLS 2219

LONG: 118 ° 23 ' 40.25662 " W

FIRM: BAGETT, GRIFFITH, & BLACKMAN
2006 ADAMS AVENUE
LAGRANDE, OR 97850
(541) 963-6092

SP. COOR: NAD 83(91)

N: 649549.485 INT FT.

E: 8742562.011 INT FT.

TYPE: GPS

THETA: 1 ° 29 ' 35.9155364 "

ORDER: SECOND CLASS: 1

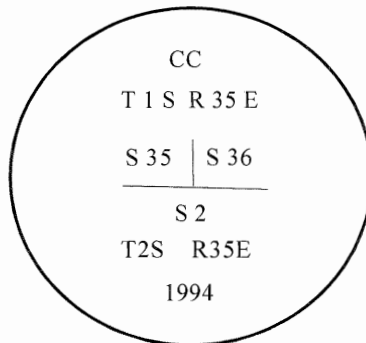
SCALE FACTOR: 0.9999065851

ELEV: 4289.56 US FT.

ELEV: DATUM: NGVD 29

COMMENTS:

5/8" iron pin with 2" aluminum cap
marked as shown .



REGISTERED
PROFESSIONAL
LAND SURVEYOR

Rick G. Robinson

OREGON
July 17, 1986
RICK G. ROBINSON
2219

Renewal Date: December 31, 2018

1 METER = 3.2808333333... US FEET = 39.37 INCHES

1 METER = 3.280839895 INT'L FEET OR 1 INCH = 2.54 CM

TO CALCULATE ELEVATION FACTOR (IN THE NORTH AMERICAN CONTINENT)

DIVIDE 20,906,000 BY (20,906,000 + ELLIPSOID ELEV. IN FEET)