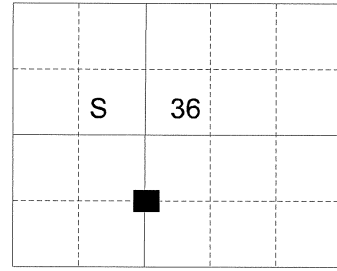


CELESTIAL FILED RECORD OF LAND CORNER MONUMENTATION

HISTORY OF ORIGINAL CORNER ESTABLISHMENT:

Corner not previously established

T 1 S R 35 E Y- 23



DESCRIPTION OF CORNER EVIDENCE FOUND:

None.

See Survey Number 015-2011.

DESCRIPTION OF MONUMENT AND ACCESSORIES I ESTABLISHED TO PERPETUATE THE ORIGINAL LOCATION OF THIS CORNER:

At the position determined by survey, I set a 5/8" x 30" iron pin with 2 1/2" aluminum cap marked as shown below, 25" in the ground, in a mound of stone, from which:

BEARING OBJECTS:

A 15 inch Ponderosa Pine bears South 60° West, a distance of 50.94 feet, marked LOT 13 BT.

An 11 inch Ponderosa Pine bears North 70° West, a distance of 27.10 feet, marked LOT 10 BT.

I set a steel fencepost 1 foot North of monument.

I hereby certify that the corner was monumented on May 19, 2011.

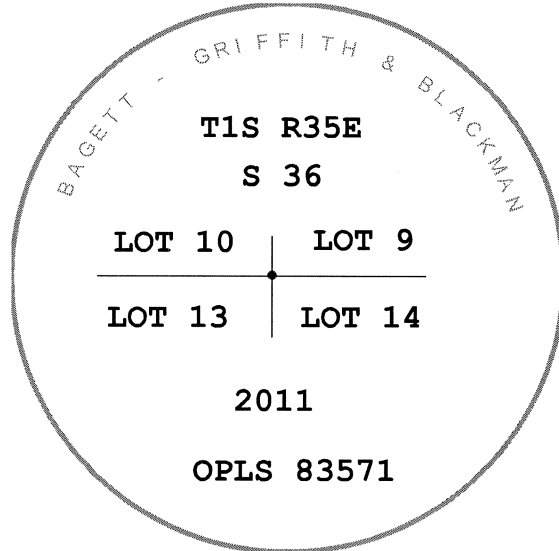
Witness: Gregory T. Blackman Jr.

REGISTERED
PROFESSIONAL
LAND SURVEYOR



OREGON
June 2, 2010
JEFFERY S. HSU
83571

Renewal Date: June 30, 2011



UNION COUNTY
SURVEYOR

Date Received 6/6/11

Date Filed 6/22/11

Filed By R. Robinson, Deputy

File Number 005-2011R

I used a magnetic compass and steel tape in the establishment of the accessories. Magnetic declination used was 16° East. The distances are to a 60d spike in the right hand side of the trees and bearings are to a brass washer marked OPLS 83571 in the upper portion of the BT blaze.