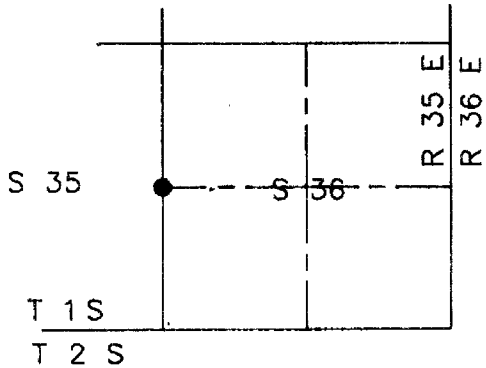


CERTIFIED RECORD OF LAND CORNER MONUMENTATION

CORNER DIAGRAM

Corner W 1/4  
 Section 36  
 Township 1S  
 Range 35 E.  
 County Union



HISTORY OF PREVIOUS SURVEYS

G.L.O. survey by Rufus Moore in 1882.

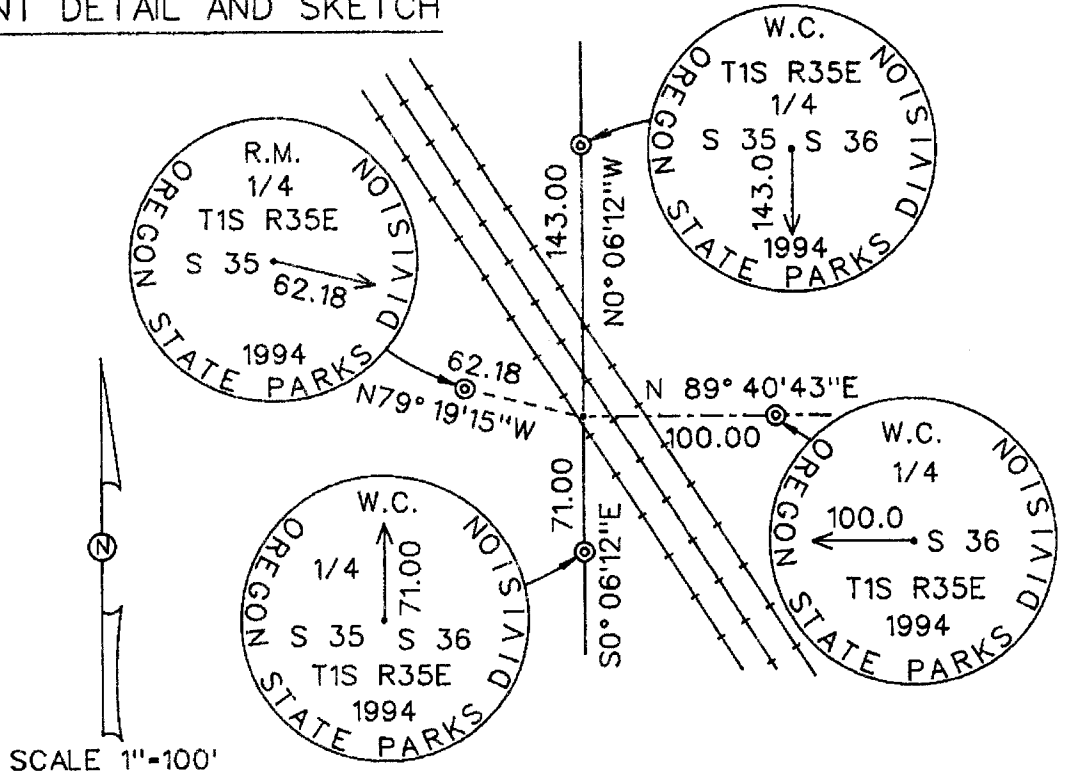
CORNER EVIDENCE FOUND

None

MONUMENT SET (DESCRIPTION AND PROCEDURES)

Established position of 1/4 corner by single proportion along the section line. Did not set 1/4 corner as it falls in railroad tracks. Set three witness corners and one reference corner. All monuments are 5/8"x30" iron rods with 2" aluminum caps marked as shown on detail.

MONUMENT DETAIL AND SKETCH



NEW ACCESSORIES

As shown on detail.

COMMENTS

Bearings are based on County Survey Number 044-1994

SURVEYOR'S CERTIFICATION

**UNION COUNTY SURVEYOR**

Date Received 11/25/94  
 Date Filed 12/31/94  
 By Henry T. Clark  
 File No. 166-1994R

I hereby certify that the corner point described hereon was perpetuated by me on June 22, 1994.

Witnesses:  
 Dean Timmerman and Mike Huck

OREGON STATE PARKS  
 1115 COMMERCIAL ST. NE  
 SALEM, OR 97310-1001  
 (503) 378-6821

REGISTERED PROFESSIONAL LAND SURVEYOR

*Russell T. Pinard*

OREGON  
 JULY 16, 1971  
 RUSSELL T. PINARD  
 958

expires 12-31-94

# HORIZONTAL CONTROL DATA

## UNION COUNTY, OREGON

### OREGON STATE PLANE, NORTH ZONE (3601)

STA NAME: 2018033

SOUTH REFERENCE TO 1/4 SECTION CORNER COMMON TO SECTIONS 35 AND 36

TWP. 1 S RGE. 35 E.

GEODETIC COORD: NAD 83(91)

DATE TIED: October 9, 2018

LAT: 45 ° 26 ' 6.15602 " N

SURVEYOR: RICK G. ROBINSON  
OPLS 2219

LONG: 118 ° 23 ' 40.31067 " W

FIRM: BAGETT, GRIFFITH, & BLACKMAN  
2006 ADAMS AVENUE  
LAGRANDE, OR 97850  
(541) 963-6092

SP. COOR: NAD 83(91)

N: 651745.588 INT FT.

E: 8742500.911 INT FT.

TYPE: GPS

THETA: 1 ° 29 ' 35.4096871 "

ORDER: SECOND CLASS: 1

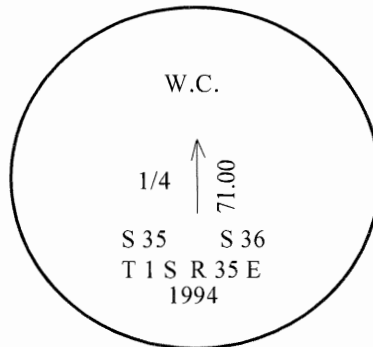
SCALE FACTOR: 0.999905365

ELEV: 4220.81 US FT.

ELEV: DATUM: NGVD 29

COMMENTS:

5/8" iron pin with 2" aluminum cap  
marked as shown for South reference to  
1/4 corner common to sections 35 and 36.



REGISTERED  
PROFESSIONAL  
LAND SURVEYOR

*Rick G. Robinson*

OREGON  
July 17, 1986  
RICK G. ROBINSON  
2219

Renewal Date: December 31, 2018

1 METER = 3.2808333333... US FEET = 39.37 INCHES

1 METER = 3.280839895 INT'L FEET OR 1 INCH = 2.54 CM

TO CALCULATE ELEVATION FACTOR ( IN THE NORTH AMERICAN CONTINENT)

DIVIDE 20,906,000 BY (20,906,000 + ELLIPSOID ELEV. IN FEET)

# HORIZONTAL CONTROL DATA

## UNION COUNTY, OREGON

### OREGON STATE PLANE, NORTH ZONE (3601)

STA NAME: 2018034

WEST REFERENCE TO 1/4 SECTION CORNER COMMON TO SECTIONS 35 AND 36

TWP. 1 S RGE. 35 E.

GEODETIC COORD: NAD 83(91)

DATE TIED: October 9, 2018

LAT: 45 ° 26 ' 6.97042 " N

SURVEYOR: RICK G. ROBINSON  
OPLS 2219

LONG: 118 ° 23 ' 41.16931 " W

FIRM: BAGETT, GRIFFITH, & BLACKMAN  
2006 ADAMS AVENUE  
LAGRANDE, OR 97850  
(541) 963-6092

SP. COOR: NAD 83(91)

N: 651826.445 INT FT.

E: 8742437.557 INT FT.

TYPE: GPS

THETA: 1 ° 29 ' 34.80074674"

ORDER: SECOND CLASS: 1

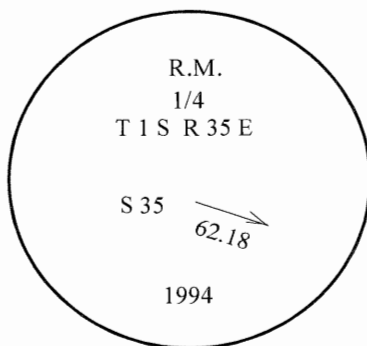
SCALE FACTOR: 0.9999053834

ELEV: 4214.70 US FT.

ELEV: DATUM: NGVD 29

COMMENTS:

5/8" iron pin with 2" aluminum cap  
marked as shown for West reference to  
1/4 corner common to sections 35 and 36.



REGISTERED  
PROFESSIONAL  
LAND SURVEYOR

*Rick G. Robinson*

OREGON  
July 17, 1986  
RICK G. ROBINSON  
2219

Renewal Date: December 31, 2018

1 METER = 3.2808333333... US FEET = 39.37 INCHES

1 METER = 3.280839895 INT'L FEET OR 1 INCH = 2.54 CM

TO CALCULATE ELEVATION FACTOR ( IN THE NORTH AMERICAN CONTINENT)

DIVIDE 20,906,000 BY (20,906,000 + ELLIPSOID ELEV. IN FEET)