

USDA-FOREST SERVICE

Index

File No. V-21

CORNER RECORD (SEARCH)

(Ref. FSM 7151.4)

Tract or

Survey No.

Cor.

No.

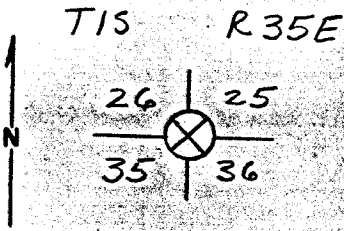
T 1S R. 35E

R.D. WALLA WALLA County UMATILLA-UNION (ON LINE)

Merid. WILLAMETTE

N.F. UMATILLA State OREGON

CORNER DIAGRAM



DESCRIBE CORNER MONUMENT FOUND

FENCE CORNER - FENCES RUN NORTH & WEST FROM CORNER.

DESCRIBE BEARING TREES OR OTHER OFFICIAL ACCESSORIES FOUND

ROOT HOLE WITH A PIECE OF WOOD LYING ALONGSIDE WITH SCRIBING, "R 35E S 35 BT", VISIBLE BEARS S 61° W, 23.8 FT. A ROOT HOLE BEARS S 64° E, 7.9 FT. DECAYED LOG LYING ALONGSIDE - NO SCRIBES OR BLAZES VISIBLE. A SAWN LOG WITH A PARTLY HEALED BLAZE BEARS N 55° W, 15 FT. NO SCRIBES ARE VISIBLE. THIS LOG HAS

BEEN DISTURBED. I PLACED A B.T. SIGN ON THE SCRIBED WOOD FRAGMENT. CORNER IS ABOUT 400 FT, N 65° W, FROM COUNTY LINE SIGN ON KAMELA ROAD.

PHOTO IDENTIFICATION DATA

Photo No. _____

Filed At. _____

Object Ident. _____

Ident. By _____

Signature

PLANE COORDINATE POSITION DATA

State _____ Zone _____

X _____

Y _____

Estab. By _____

Agency

Signature

Title

Division

Headquarters

Date

7100-52 (3.68)

Dennis J. Layland PLS 1636

6/24/81

UNION COUNTY SURVEYOR

Date Received 12-12-82

Date Filed 12-12-89

By [Signature]

File No. 235-89R

CERTIFIED RECORD OF LAND CORNER MONUMENTATION

V-21

History of original corner establishment:

This corner was established by Rufus S. Moore under contract number 451 on October 3, 1882 as follows:

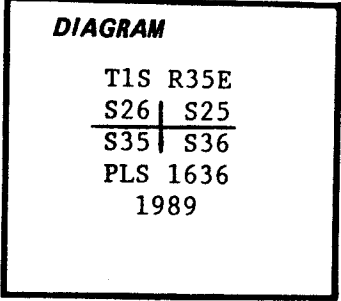
Set post for corner to sections 25, 26, 35 and 36, from which:

A 15" fir bears N48°E, 23 links (15.18 feet) scribed T1S R35E S25 BT.

A 16" fir bears N55°W, 9 links (5.94 feet) scribed T1S R35E S26 BT.

An 8" fir bears S61°W, 36 links (23.76 feet) scribed T1S R35E S35 BT.

A 12" fir bears S64°E, 12 links (7.92 feet) scribed T1S R35E S36 BT.



Description of corner evidence found:

I visited this corner on June 24, 1981 and found and recorded the following original corner evidence: A root hole with the remains of the tree lying alongside with visible scribes "R35E S35 BT". This root hole fit the location of the southwest bearing tree. I also found root holes which fit the location of the northeast and southeast bearing trees. A decayed log with a healed blaze was lying alongside the root hole to the southeast. A fence corner was at the approximate corner point. At that time I nailed a Bearing Tree sign to the recovered scribed piece of bearing tree. Today I find the following: The bearing tree sign I placed in 1981 is lying north of the root hole. The scribed bearing tree remains I recovered in 1981 are gone. A root hole bears S61°W, 23.8 feet. A root hole bears N48°E, 15.2 feet. A root hole with a decayed log lying alongside with a healed blaze, no scribe marks remain, bears S64°E, 7.9 feet. The location of the original northwest bearing tree has been cleared with heavy machinery for fence construction and nothing remains of this tree. A fence corner with fences projecting north and west bears N65°W, 3.0 feet.

Description of monument and accessories established to perpetuate the original location of this corner:

At the point for the corner determined by reference to the original bearing tree remains, I set a 2 1/2" by 30" aluminum pipe, with a 2 1/2 inch aluminum cap attached, 26" into the ground. The cap is marked as shown in the diagram above. From which new accessories:

A 14" white fir bears S32°W, 25.1 feet scribed "T1S R35E S35 BT"

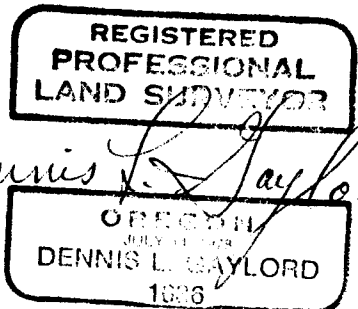
A 22" douglas-fir bears S1°E, 33.4 feet scribed "T1S R35E S36 BT"

A 15" white fir bears N61°E, 36.4 feet scribed "T1S R35E S25 BT"

A 13" western larch bears N29°W, 36.1 feet scribed "T1S R35E S26 BT"

All four bearing trees are scribed on a single blaze and also have a 3/4 inch brass washer, marked "PLS 1636", nailed flush to the lower portion of the blaze. Each tree additionally has a 54-3 (bearing tree) and a 54-9 (land survey monument) sign attached.

I hereby certify the above corner point was perpetuated as hereon described on November 22, 1989. Witness: Caroline Davis. De: 19 1/2°E.


Dennis L. Baylord

Office of... County Surveyor County of... Union
 State of... Oregon I hereby certify that the within instrument was filed in this office
 for record on the..... day of....., 19.....
 by
 (COUNTY OFFICIAL) (DEPUTY)

UNION COUNTY SURVEYOR	
Date Received <u>12-5-89</u>	
Date Filed <u>12-7-89</u>	
By <u>R. ROBINSON, DEPUTY</u>	
File No. <u>234-89R</u>	

CERTIFIED RECORD OF LAND CORNER MONUMENTATION

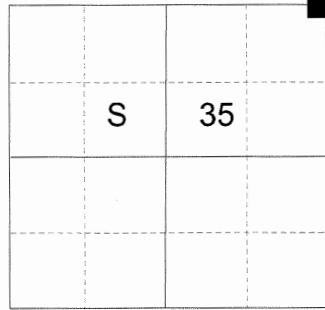
HISTORY OF ORIGINAL CORNER ESTABLISHED:

Corner originally established under GLO Contract No. 451, dated June 12, 1882, executed by Rufus Moore. Surveyor General field notes state:

Set post 4 ft. long, 4 ins. square, 24 ins. in the ground, for cor. to sec. 25, 26, 35 and 36, from which:

- A fir, 15 ins. dia. bears N48°E, 23 lks. dist. marked T1S R35E S25 BT.
- A fir, 16 ins. dia. bears N55°W, 9 lks. dist. marked T1S R35E S26 BT.
- A fir, 8 ins. dia. bears S61°W, 36 lks. dist. marked T1S R35E S35 BT.
- A fir, 12 ins. dia. bears S64E, 12 lks. dist. marked T1S R35E S36 BT.

T 1 S R 35 E V-21



Corner monumented from original corner evidence by Dennis Gaylord in 1989. Union County Monumentation record states:

At the point for the corner determined by reference to the original bearing tree remains, I set a 2 ½" by 30" aluminum pipe, with a 2 ½ inch aluminum cap attached, 26" into the ground. From which new accessories:

- A 14" white fir bears S32°W, 25.1 feet scribed "T1S R35E S35 BT"
- A 22" douglas fir bears S1°E, 33.4 feet scribed "T1S R35E S36 BT"
- A 15" white fir bears N61°E, 36.4 feet scribed "T1S R35E S25 BT"
- A 13" western larch bears N29°W, 36.1 feet scribed "T1S R35E S26 BT"

DESCRIPTION OF CORNER EVIDENCE FOUND:

- Found 2 ½" aluminum pipe with 2 ½" aluminum cap marked as shown below, 6" above ground, from which:
- A 20" White fir bears North 61° East, a distance of 36.40 feet, alive and vigorous with healed blaze.
- A 30" Douglas fir bears South 1° East, a distance of 33.40 feet, alive and vigorous with healed blaze.
- A stump hole bears South 32° West, a distance of 25.1 feet, with visible scribe marks on wood lying adjacent.
- A 6 ft. tall snag bears North 29° West, a distance of 36.1 feet, with partially healed blaze.

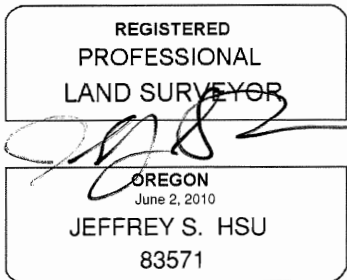
SEE SURVEY NUMBER 043-2018

DESCRIPTION OF MONUMENT AND ACCESSORIES I ESTABLISHED TO PERPETUATE THE ORIGINAL LOCATION OF THIS CORNER:

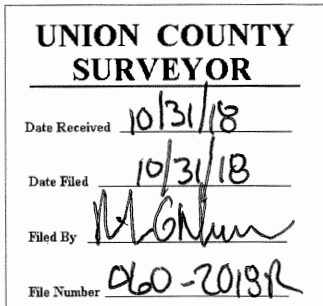
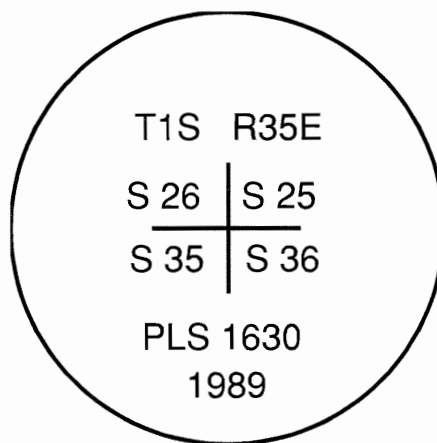
From the aluminum pipe monument,

NEW BEARING OBJECTS:

- A 4" Douglas fir bears South 75° West, a distance of 7.60 feet, marked T1S R35E S35 BT.
 - A 12" Western Larch bears North 70° West, a distance of 3.30 feet, marked T1S R35E S26 BT.
- Corner falls approx. 3 ft. SE of fence corner.
I certify this corner was perpetuated October 9, 2018. Witness: Kyle Tucker



Renewal Date: June 30, 2019



I used a steel tape and magnetic compass in the establishment of the new accessories. I used 13° East declination. The distances are to a 60d spike driven into the side of the root crown of the bearing trees. A brass washer marked OPLS 83571 is attached to the BT blaze of the new bearing trees.

HORIZONTAL CONTROL DATA

UNION COUNTY, OREGON

OREGON STATE PLANE, NORTH ZONE (3601)

STA NAME: 2018035

SECTION CORNER COMMON TO SECTIONS 25, 26, 35 AND 36

TWP. 1 S RGE. 35 E.

GEODETIC COORD: NAD 83(91)

DATE TIED: October 9, 2018

LAT: 45 ° 26 ' 33.29043 " N

SURVEYOR: RICK G. ROBINSON
OPLS 2219

LONG: 118 ° 23 ' 40.38335 " W

FIRM: BAGETT, GRIFFITH, & BLACKMAN
2006 ADAMS AVENUE
LAGRANDE, OR 97850
(541) 963-6092

SP. COOR: NAD 83(91)

N: 654492.626 INT FT.

E: 8742424.121 INT FT.

TYPE: GPS

THETA: 1 ° 29 ' 35.3581416 "

ORDER: SECOND CLASS: 1

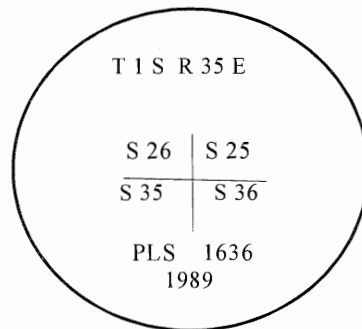
SCALE FACTOR: 0.9999059845

ELEV: 4368.95 US FT.

ELEV: DATUM: NGVD 29

COMMENTS:

2 ½" aluminum pipe with aluminum cap
marked as shown 4" above ground



REGISTERED
PROFESSIONAL
LAND SURVEYOR

Rick G. Robinson
OREGON
July 17, 1986
RICK G. ROBINSON
2219

Renewal Date: December 31, 2018

1 METER = 3.2808333333... US FEET = 39.37 INCHES

1 METER = 3.280839895 INT'L FEET OR 1 INCH = 2.54 CM

TO CALCULATE ELEVATION FACTOR (IN THE NORTH AMERICAN CONTINENT)

DIVIDE 20,906,000 BY (20,906,000 + ELLIPSOID ELEV. IN FEET)