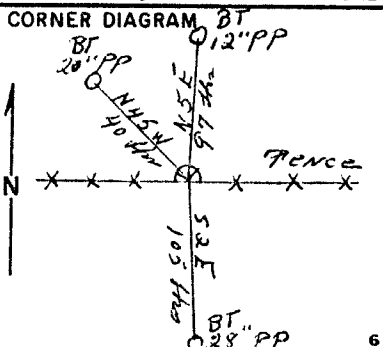


Index File No. Z-5  
T 14N R. 41E  
Merid. Will.

CORNER RECORD (SEARCH)

Tract or Survey No. \_\_\_\_\_  
Cor. No. 2  
A-5  
R.D. UNION County UNION  
N.F. WALLOWA-WHITMAN State OREGON



DESCRIBE CORNER MONUMENT FOUND  
none

DESCRIBE BEARING TREES OR OTHER OFFICIAL ACCESSORIES FOUND  
Found 12" PP Bys. N5°E 97 Lks. marked TIS R41E 532 BL BT  
28" PP Bys S2E 105 lks marked BL BT  
20" PP Bys N45W 40 lks BLAZE grown over.

PHOTO IDENTIFICATION DATA  
Photo No. ENW 5-211  
Filed At. \_\_\_\_\_  
Object Ident. \_\_\_\_\_  
Ident. By HE  
Signature

DESCRIBE CORNER LOCATION RELATIVE TO NEAR-BY FEATURES, ALSO HOW TO REACH CORNER  
This corner is EAST of Road or fence line.

PLANE COORDINATE POSITION DATA  
State \_\_\_\_\_ Zone \_\_\_\_\_  
X \_\_\_\_\_  
Y \_\_\_\_\_  
Estab. By \_\_\_\_\_  
Agency

Signature HE Title Surveying Aid Division FS Headquarters WALLOWA Date 4-3-67 7100-52 REV. 65 5

UNION COUNTY SURVEYOR  
Date Received \_\_\_\_\_  
Date Filed \_\_\_\_\_  
By \_\_\_\_\_  
File No. 30-87R

461 TIN 41205

Remonumentation of Certain Original Corner Points,  
T. 1 S., R. 41 E., Willamette Meridian

CHAINS

The cor. of secs. 31 and 32, on S. bdy., T. 1 N.,  
R. 41 E., monumented with original basalt stone, 16 x 14  
x 7 ins., firmly set 10 ins. in the ground, mkd. with 1  
notch on W. and 5 notches on E. edges, from which the  
remains of the bearing trees mkd. by Meldrum:

A sawed pine stump, 12 ins. diam.,  
bears N.  $5\frac{3}{4}^{\circ}$  E., 97 lks. dist., with  
scribe marks TIN R41E S32 BL BT visible  
on open double blaze.

A pine snag, 24 ins. diam., bears  
S.  $20\frac{1}{2}^{\circ}$  E., 105 lks. dist., with scribe  
marks BL BT visible on open double blaze.

A pine, 28 ins. diam., bears N.  $45^{\circ}$  W.,  
40 lks. dist., with scribe marks 1 B  
visible on open double blaze.

At the corner point

Set an iron post, 28 ins. long,  $2\frac{1}{2}$  ins. diam., 22 ins.  
in the ground, with brass cap mkd.

T 1 N R 41 E  
S 31 | S 32  
S 6  
T 1 S R 41 E  
1973

TIN 41205

from which a new bearing tree

A fir, 12 ins. diam., bears N.  $55^{\circ}$  E.,  
30 lks. dist., mkd. TIN R41E S32 BT.

Bury the corner stone alongside iron post.

The cor. of secs. 33 and 34, on S. bdy., T. 1 N.,  
R. 41 E., determined at record bearing and distance,  
from the remains of the bearing trees mkd. by Meldrum:

A decayed pine stump, size indeterminate,  
bears N.  $16^{\circ}$  E., 29 lks. dist., no marks  
visible.

A fir stump, size indeterminate, bears  
S.  $13^{\circ}$  W., 38 lks. dist., no marks  
visible.

A pine, 32 ins. diam., bears N.  $43^{\circ}$  W.,  
9 lks. dist., with scribe mark B visible  
on open blaze.

At the corner point

Set an iron post, 28 ins. long,  $2\frac{1}{2}$  ins. diam., 22 ins.  
in the ground, with brass cap mkd.

T 1 N R 41 E  
S 33 | S 34  
S 4  
T 1 S  
1973

TIN 41213

from which a new bearing tree

A fir, 12 ins. diam., bears N.  $3\frac{1}{2}^{\circ}$  E.,  
74 lks. dist., mkd. TIN R41E S34 BT.

**UNION COUNTY  
SURVEYOR**

Date Received 3/15/13

Date Filed 3/15/13

By [Signature]

File No. 297-2013R