

Index File No. Z-3

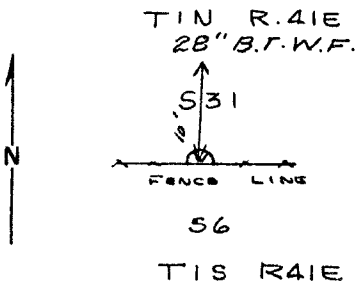
CORNER RECORD (SEARCH)

Tract or Survey No. _____ Cor. SOUTH 1/4 No. SEC 31

T 1N R. 41E R.D. BEAR SLEDS County UNION

Merid. WILLAMETTE N.F. WALLOWA-HITMAN State OREGON

CORNER DIAGRAM



DESCRIBE CORNER MONUMENT FOUND

NONE

DESCRIBE BEARING TREES OR OTHER OFFICIAL ACCESSORIES FOUND

Found 28" W.F. MARKED 1/4 S. B. L. B.T.

PHOTO IDENTIFICATION DATA

Photo No. _____

Filed At. _____

Object Ident. _____

Ident. By _____

Signature

DESCRIBE CORNER LOCATION RELATIVE TO NEAR-BY FEATURES, ALSO HOW TO REACH CORNER

B.T. IS APPROX. 10' NORTH OF FENCE LINE.
APPROX. 210 FT. WEST OF RAVINE

PLANE COORDINATE POSITION DATA

State _____ Zone _____

X _____

Y _____

Estab. By _____

Agency

Signature

H.E.

Title

SURVEYING AID.

Division

Headquarters

Date

4-3-67

7100-52

REV. 65 5

UNION COUNTY SURVEYOR

Date Received _____

Date Filed _____

By _____

File No. 29-87R

Remonumentation of Certain Original Corner Points,
T. 1 S., R. 41 E., Willamette Meridian, Oregon

CHAINS

record bearing and distance, from the remains of the original bearing trees:

A pine snag, size indeterminate, bears N. 20° E., 9 lks. dist., with fragmentary scribe marks visible on opened blaze.

A pine snag, 24 ins. diam., bears S. 65° W., 79 lks. dist., no marks visible on open burned blaze. (Record, 72 lks.)

A fir root crown, size indeterminate, bears N. 25° W., 37 lks. dist., no marks visible.

At the corner point

Set an iron post, 28 ins. long, 2½ ins. diam., 24 ins. in the ground, with brass cap mkd.

T 1 N
R 40 E R 41 E
S 36 S 31
S 6
T 1 S R 41 E
1973

from which new bearing trees

A fir, 10 ins. diam., bears N. 55° E., 55 lks. dist., mkd. TIN R41E S31 BT.

A fir, 14 ins. diam., bears N. 56° W., 126 lks. dist., mkd. TIN R40E S36 BT.

(Remonumenting a corner established by
Henry Meldrum, Deputy Surveyor, in 1882)

The ¼ sec. cor. of sec. 31 only, on S. bdy., T. 1 N., R. 41 E., determined at record bearing and distance, from the remains of the original bearing trees:

A white fir, 35 ins. diam., bears N. 10° E., 14 lks. dist., with scribe marks ¼ S BL BT visible on open double blaze.

At the corner point

Set an iron post, 28 ins. long, 2½ ins. diam., 24 ins. in the ground, with brass cap mkd.

T 1 N R 41 E
S 31
1973

from which a new bearing tree

A fir, 16 ins. diam., bears N. 82° W., 49 lks. dist., mkd. ¼ S31 BT.

The corner is located in fence line extends E. and W.

(Remonumenting corners established by William R. Odell, Deputy Surveyor, in 1866, reestablished by Henry Meldrum, Deputy Surveyor, in 1882, and reestablished by Alonzo Gesner, Deputy Surveyor, in 1896)

UNION COUNTY
SURVEYOR

Date Received 3/15/13

Date Filed 3/15/13

By J. H. 81 DEPUTY

File No. 296-2013R