

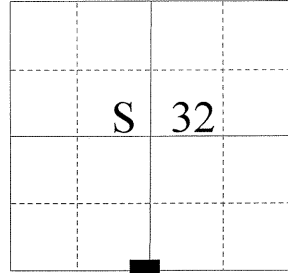
UNION COUNTY SURVEYOR

CERTIFIED RECORD OF LAND CORNER MONUMENTATION

HISTORY OF ORIGINAL CORNER ESTABLISHMENT:

Corner originally established by Timothy W. Davenport under GLO contract Number 102, dated July 20, 1863. Surveyor General record states:

T 1 N R 40 E Z-07



Set post from which:

- A Pine 24" dia. bears N5°W, 204 lks.
- A Pine 12" dia. bears N77°W, 104 lks.

No record of subsequent monumentation found in Union County survey records.

DESCRIPTION OF CORNER EVIDENCE FOUND:

Found 30" stump in decayed condition with chaining notch.

See Union County Survey 033-1998

DESCRIPTION OF MONUMENT AND ACCESSORIES I ESTABLISHED

TO PERPETUATE THE ORIGINAL LOCATION OF THIS CORNER:

At record bearing and distance from pine stump, I set a 2½" x 30" aluminum pipe with aluminum cap marked as shown below, 24" in the ground with a mound of stone 3 feet from base to top of cap from which:

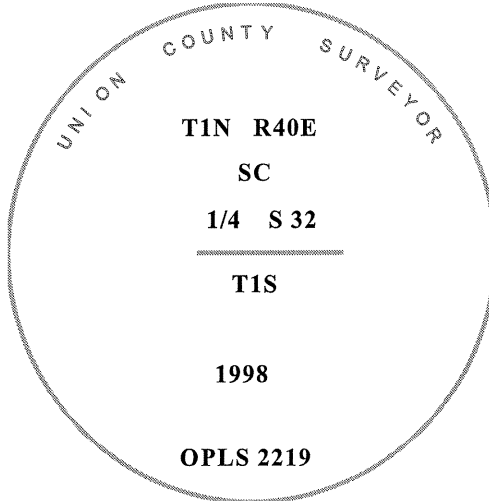
- A 22" Ponderosa Pine bears N18°E, a distance of 181.55 feet, marked 1/4 S32 BT.
- A 5/8" iron pin with 1/1/2" aluminum cap bears N15°E, a distance of 68.62 feet, marked UNION COUNTY SURVEYOR NE RP.
- A 5/8" iron pin with 1/1/2" aluminum cap bears N43°W, a distance of 52.95 feet, marked UNION COUNTY SURVEYOR NE RP.
- A 30" Douglas Fir bears N6°W, a distance of 184.95 feet, marked 1/4 S32 BT.

I hereby certify that the corner was monumented on August 24, 1998.
Witness: Norbert Volny, Greg Engalgau

REGISTERED
PROFESSIONAL
LAND SURVEYOR

OREGON
July 17, 1986
RICK G. ROBINSON
2219

Renewal Date December 31, 1998



UNION COUNTY SURVEYOR

Date Received 8/25/98

Date Filed 9/26/98

Filed By [Signature]

File Number 064-1998R

I used a total station instrument in the establishment of the new accessories. The basis of bearing is the same as that of survey no. 033-1998. The distances are to a 60d spike driven into the right side of the root crown of the bearing trees or to the center of the caps on the reference pins. A brass washer marked OPLS 2219 is attached to the BT blaze on the bearing trees.

HORIZONTAL CONTROL DATA

UNION COUNTY, OREGON

OREGON STATE PLANE, NORTH ZONE (3601)

STA NAME: 201614

1/4 SECTION CORNER COMMON TO SECTION 32 ONLY

TWP. 1 N. RGE. 40 E.

GEODETIC COORD: NAD 83(91)

DATE TIED: October 27, 2016

LAT: 45 ° 30 ' 53.45362 " N

SURVEYOR: RICK G. ROBINSON
OPLS 2219

LONG: 117 ° 50 ' 20.99056 " W

FIRM: BAGETT, GRIFFITH, & BLACKMAN
2006 ADAMS AVENUE
LAGRANDE, OR 97850
(541) 963-6092

SP. COOR: NAD 83(91)

N: 685031.468 INT FT.

E: 8884040.046 INT FT.

TYPE: GPS

THETA: 1 ° 53 ' 13.299553 "

ORDER: SECOND CLASS: 1

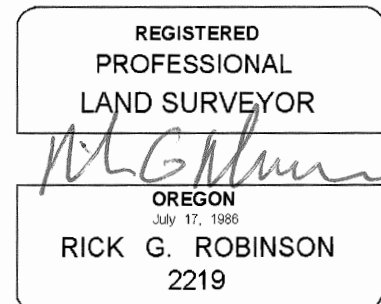
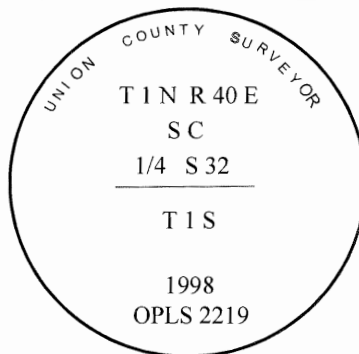
SCALE FACTOR: 0.9999128042

ELEV: 3009.36 US FT.

ELEV: DATUM: NGVD 29

COMMENTS:

2 1/2" aluminum monument with cap marked
as shown, in mound of stone



Renewal Date: December 31, 2016

1 METER = 3.280833333... US FEET = 39.37 INCHES

1 METER = 3.280839895 INT'L FEET OR 1 INCH = 2.54 CM

TO CALCULATE ELEVATION FACTOR (IN THE NORTH AMERICAN CONTINENT)

DIVIDE 20,906,000 BY (20,906,000 + ELLIPSOID ELEV. IN FEET)