

**CERTIFIED RECORD OF LAND CORNER MONUMENTATION**

**HISTORY OF ORIGINAL CORNER ESTABLISHED:**

Corner originally established by Timothy W. Davenport under GLO contract 102, dated July 20, 1863. Surveyor General field notes state:

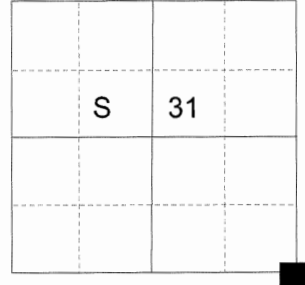
Set post corner to Secs 31 and 32 on point of rocks where there is no room for mound.  
A Red Fir 16 inch in dia. bears N40°E, 100 lks.  
A Red Fir 18 inch in dia. bears N5°W, 150 lks.

Corner recovered by Henry Meldrum under GLO contract 450, dated June 11, 1882. Surveyor General field notes state:

Intersect Base Line 125 lks. West of Cor to Secs 31 and 32 on point of rock above Clark Creek which is a post 4 ft. long, 4 ins. square marked T1N R40E BL on N S31 on W and S32 on E with 1 notch on West and 5 on East faces, from which:

A Fir 16 in. diam. bears N40°E, 100 lks dist., marked T1N R32 BL BT.  
A Fir 18 in. diam. bears N5°W, 150 lks. dist., marked R40E S31 BL BT.

T 1 N R 40 E Z-05



**DESCRIPTION OF CORNER EVIDENCE FOUND:**

No original post or bearing trees found. Between the South quarter corners of Section 31 and 32, I find a narrow point of rock as described in the Davenport field notes. Distances are harmonious with topo calls given in the Davenport field notes.

SEE PARTITION PLAT NUMBER 20160020T

**DESCRIPTION OF MONUMENT AND ACCESSORIES I ESTABLISHED**

**TO PERPETUATE THE ORIGINAL LOCATION OF THIS CORNER:**

As I find it impractical to set a durable monument on the found mound of rock, at a point 5.00 feet South 89°46'47" West from the center of said point, I set a 5/8" x 30" iron pin monument, with 2 1/2" aluminum cap attached, marked as shown below, 27" in the ground, from which:

**NEW BEARING OBJECTS:**

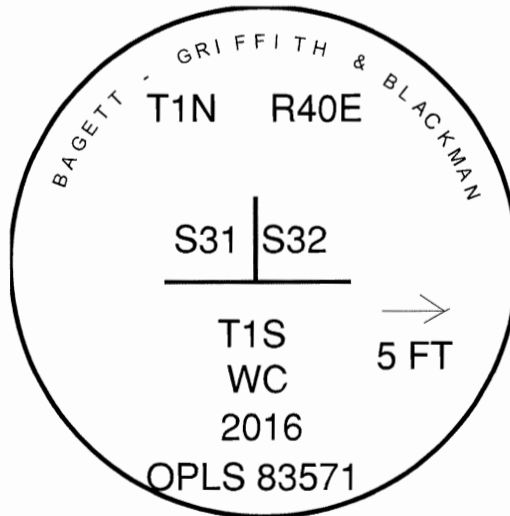
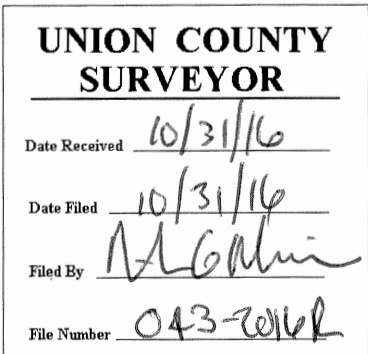
A rock outcrop bears North 64°26' East, a distance of 3.64 feet, marked X B0.  
A rock outcrop bears South 1°21' West, a distance of 7.98 feet, marked X B0.  
A rock outcrop bears North 58°10' West, a distance of 14.22 feet, marked X B0.  
Closing corner to the corner between Sections 5 and 6, T1S, R40E bears South 89°46'47" West, a distance of 77.50 feet.

No other bearing objects convenient.

I hereby certify that this monument was set October 19, 2016.



Renewal Date: June 30, 2017



I use a RTK GPS unit in the establishment of the accessories. Basis of Bearings is as per Partition Plat for Kent Coppiner filed concurrently. Bearings and distances are to the center of the aluminum caps.

# HORIZONTAL CONTROL DATA

## UNION COUNTY, OREGON

### OREGON STATE PLANE, NORTH ZONE (3601)

STA NAME: 201615

SECTION CORNER COMMON TO SECTIONS 31 AND 32 ONLY

TWP. 1 N. RGE. 40 E.

GEODETIC COORD: NAD 83(91)

DATE TIED: October 27, 2016

LAT: 45 ° 30 ' 53.36038 " N

SURVEYOR: RICK G. ROBINSON  
OPLS 2219

LONG: 117 ° 50 ' 59.11660 " W

FIRM: BAGETT, GRIFFITH, & BLACKMAN  
2006 ADAMS AVENUE  
LAGRANDE, OR 97850  
(541) 963-6092

SP. COOR: NAD 83(91)

N: 684932.815 INT FT.

E: 8881327.097 INT FT.

TYPE: GPS

THETA: 1 ° 52 ' 46.2610995 "

ORDER: SECOND CLASS: 1

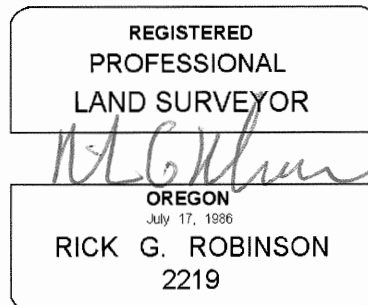
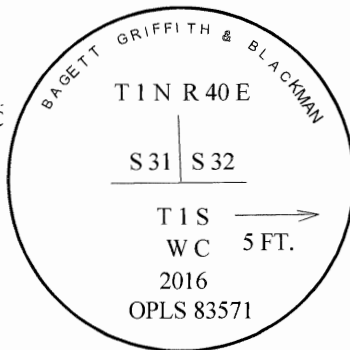
SCALE FACTOR: 0.9999128015

ELEV: 3110.17 US FT.

ELEV: DATUM: NGVD 29

COMMENTS:

5/8" iron pin with 2 1/2" aluminum cap marked  
as shown, 5 feet West of true corner position



Renewal Date: December 31, 2016

1 METER = 3.2808333333... US FEET = 39.37 INCHES

1 METER = 3.280839895 INT'L FEET OR 1 INCH = 2.54 CM

TO CALCULATE ELEVATION FACTOR ( IN THE NORTH AMERICAN CONTINENT)

DIVIDE 20,906,000 BY (20,906,000 + ELLIPSOID ELEV. IN FEET)