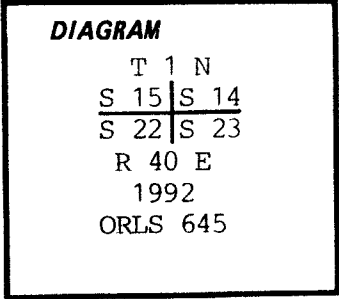


CERTIFIED RECORD OF LAND CORNER MONUMENTATION

History of original corner establishment:

This section corner was set by deputy surveyor William H. Odell, under contract No. 120, dated May 27, 1867. He states he set a post for the section corner to sec's 14, 15, 22, 23 and drove a charred stake and a raised mound of stone as per instructions.



Description of corner evidence found:

At the assumed section corner location, I found a county road running east-west and old fence lines running North and South. Using the intersection of the County road right-of-way and the fence lines, I found a GLO topo call to a small spring branch to fit very well. There is no other evidence available at this location.

Description of monument and accessories I established to perpetuate the original location of this corner:

Using the evidence I found to be the best acceptable data available at the corner location, I then set a 2½ in. aluminum cap in a block of concrete with two pieces of rebar reinforcing in the concrete approximately 6 in. below the surface as the area is in solid rock and it is impractical to go deeper. The cap being stamped as shown in the above diagram. With no trees available in the area, I then set four reference pins, being 5/8 in. x 12 in. iron pins, driven to refusal, with a plastic cap stamped ORLS 645.

- Pin No. 1 bears N 55 51 E, 47.91 feet.
- Pin No. 2 bears S 51 57 E, 41.95 feet.
- Pin No. 3 bears S 41 48 W, 35.95 feet.
- Pin No. 4 bears N 52 50 W, 43.05 feet.

UNION COUNTY SURVEYOR
Date Received <u>11/23/92</u>
Date Filed <u>11/27/92</u>
By <u>Ray Black</u>
File No. <u>093-1992R</u>

REGISTERED PROFESSIONAL LAND SURVEYOR
<i>James H. Hambleton</i>
<u>11-23-92</u>
OREGON JULY 19, 1964 JAMES H. HAMBLETON 645

Office of..... County of.....
 State of....., I hereby certify that the within instrument was filed in this office
 for record on the..... day of....., 19.....
 by
 (COUNTY OFFICIAL) (DEPUTY)

CERTIFIED RECORD OF LAND CORNER MONUMENTATION

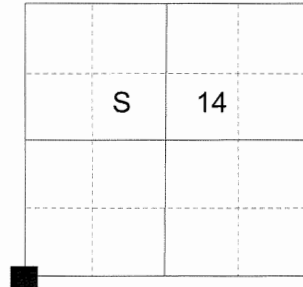
HISTORY OF ORIGINAL CORNER ESTABLISHED:

Corner originally established by William Odell under GLO joint contract number 120 dated May 27, 1867. Surveyor General field notes state:

Set post for corner to secs. 14,15,22,23, drove charred stake and raised stone mound as per instructions.

Corner was monumented by James Hambleton in 1992. Union County Monumentation Record 093-1992R states: At the assumed section corner location, I found a county road running East-West and old fence lines running North and South. Using this intersection I found a GLO topo call to a spring branch to fit very well. No other evidence available. I then set a 2 1/2" aluminum cap in a block of concrete with two pieces of rebar reinforcing in the concrete approximately 6" below the surface as the area is in solid rock and impractical to go deeper. From which:

T 1 N R 40 E N-17



- A 5/8 x 12 inch rebar with yellow plastic cap bears North 55°51' East, a dist. of 47.91 feet marked ORLS 645.
- A 5/8 x 12 inch rebar with yellow plastic cap bears South 51°57' East, a dist. of 41.95 feet marked ORLS 645.
- A 5/8 x 12 inch rebar with yellow plastic cap bears South 41°48' West, a dist. of 35.95 feet marked ORLS 645.
- A 5/8 x 12 inch rebar with yellow plastic cap bears North 52°50' West, a dist. of 43.05 feet marked ORLS 645.

DESCRIPTION OF CORNER EVIDENCE FOUND:

A 16" x 12" rounded mound of concrete, 2" below the road surface, with South West corner broken away and missing. A round impression exists in the Eastern edge of the center where the aluminum cap once set. From which:

- A 5/8 inch rebar with yellow plastic cap bears North 56° East, a dist. of 47.91 feet marked ORLS 645.
- A 5/8 inch rebar with yellow plastic cap bears South 52° East, a dist. of 41.95 feet marked ORLS 645.
- A 5/8 inch rebar with yellow plastic cap bears South 42° West, a dist. of 35.95 feet marked ORLS 645.
- A 5/8 inch rebar with yellow plastic cap bears North 53° West, a dist. of 43.05 feet marked ORLS 645.

DESCRIPTION OF MONUMENT AND ACCESSORIES I ESTABLISHED TO PERPETUATE THE ORIGINAL LOCATION OF THIS CORNER:

From the found references at record distance I set a 5/8" x 6" rebar, drilled 4" into concrete and bedrock, 2" below ground, with 2 1/2" aluminum cap marked as shown below and set in new concrete.

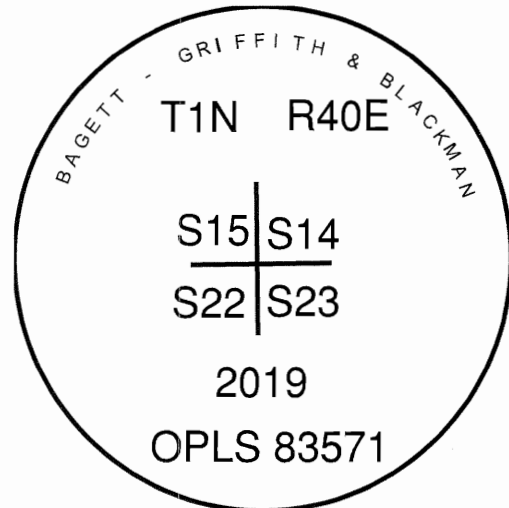
I hereby certify that the corner was perpetuated on January 25, 2019.
Witness: Kyle A. Tucker

**REGISTERED
PROFESSIONAL
LAND SURVEYOR**

Jeffrey S. Hsu
OREGON
June 2, 2010
JEFFREY S. HSU
83571

Renewal Date: June 30, 2019

**UNION COUNTY
SURVEYOR**
Date Received 2/19/19
Date Filed 2/19/19
Filed By *Neil G. Miner*
File Number 010-20192



I used a steel tape and magnetic compass in the establishment of the new monument. I used 13° East declination, the distances and bearings are to the center of the plastic caps.

HORIZONTAL CONTROL DATA

UNION COUNTY, OREGON

OREGON STATE PLANE, NORTH ZONE (3601)

STA NAME: 2019008

SECTION CORNER COMMON TO SECTIONS 14, 15, 22 AND 23

TWP. 1 N RGE. 40 E.

GEODETIC COORD: NAD 83(91)

DATE TIED: January 25, 2019

LAT: 45 ° 33 ' 31.57205 " N

SURVEYOR: RICK G. ROBINSON
OPLS 2219

LONG: 117 ° 47 ' 15.36938 " W

FIRM: BAGETT, GRIFFITH, & BLACKMAN
2006 ADAMS AVENUE
LAGRANDE, OR 97850
(541) 963-6092

SP. COOR: NAD 83(91)

N: 701476.161 INT FT.

E: 8896712.158 INT FT.

TYPE: GPS

THETA: 1 ° 55 ' 24.939496 "

ORDER: SECOND CLASS: 1

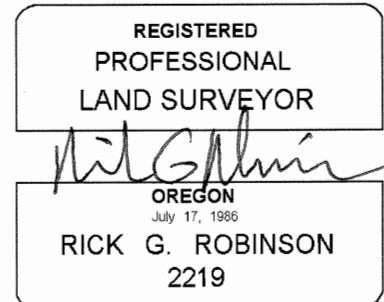
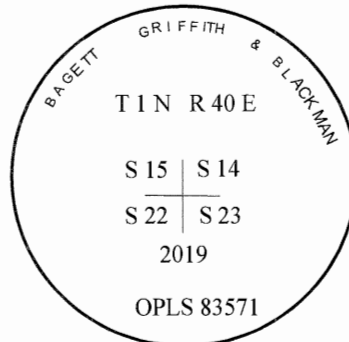
SCALE FACTOR: 0.9999177283

ELEV: 3656.78 US FT.

ELEV: DATUM: NGVD 29

COMMENTS:

5/8" iron pin with 2 1/2" aluminum cap
marked as shown



Renewal Date: December 31, 2020

1 METER = 3.2808333333... US FEET = 39.37 INCHES

1 METER = 3.280839895 INT'L FEET OR 1 INCH = 2.54 CM

TO CALCULATE ELEVATION FACTOR (IN THE NORTH AMERICAN CONTINENT)

DIVIDE 20,906,000 BY (20,906,000 + ELLIPSOID ELEV. IN FEET)