

CERTIFIED RECORD OF LAND CORNER MONUMENTATION

History of original corner establishment:

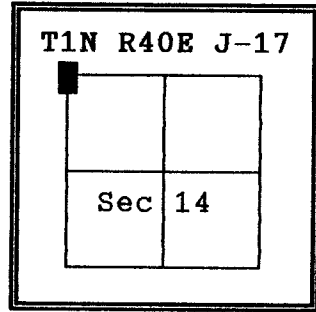
Corner was originally set by William H. Odell and Joseph G. Gray under GLO joint contract number 120, dated May 27, 1867.

Surveyor General record states:

Set post for corner to secs 10,11,14,15 in mound of stone.

The position of this corner was determined by Jim Hambleton in 1974, on the basis of the existing fence lines and roads.

See survey number 95-74.



DIAGRAM

No record of subsequent monumentation found in Union County survey records

DESCRIPTION OF CORNER EVIDENCE FOUND:

Found spike at the position determined in survey 95-74. I assumed to have been set by Hambleton.

See map of survey 037-1993

DESCRIPTION OF MONUMENT AND ACCESSORIES I ESTABLISHED TO PERPETUATE THE ORIGINAL LOCATION OF THIS CORNER:

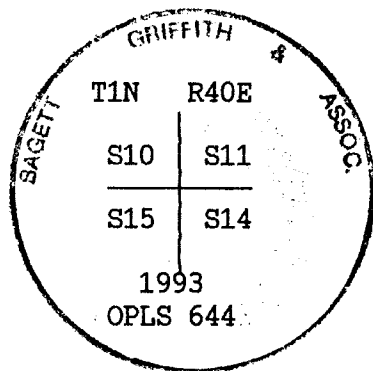
In place of spike, I set a 2½" x 30" aluminum pipe with aluminum cap marked as shown, 31 inches in the ground, from which;

BEARING OBJECTS:

- A 5/8 x 30 inch rebar with aluminum cap bears S83°E, 25.02 feet marked E RP
- A 5/8 x 30 inch rebar with aluminum cap bears S45°E, 33.18 feet marked SE RP
- A 5/8 x 30 inch rebar with aluminum cap bears S58°W, 67.95 feet marked SW RP
- A 5/8 x 30 inch rebar with aluminum cap bears N 4°W, 25.46 feet marked NW RP

Set a steel fence post approximately 11 feet North Attention sign attached.

I hereby certify that the above corner point was perpetuated as hereon described on August 24, 1993.  
Witness: Pete Crabtree



REGISTERED PROFESSIONAL LAND SURVEYOR

*Duane I. Griffith*

OREGON  
JULY 10, 1964  
DUANE I. GRIFFITH  
644  
UNION COUNTY SURVEYOR

---

Date Received 9/13/93

Date Filed 9/10/93

By Hugon T. Blacum

File No. 045-1993 K

I used a steel tape and magnetic compass in the establishment of new accessories. I used 17° East magnetic declination and the distances are to the center of the aluminum cap.

**CERTIFIED RECORD OF LAND CORNER MONUMENTATION**

**HISTORY OF ORIGINAL CORNER ESTABLISHED:**

Corner originally established by William Odell under GLO joint contract number 120 dated May 27, 1867. Surveyor General field notes state:

Set post for corner to secs. 10,11,14,15, drove charred stake and raised stone mound as per instructions.

The position of this corner was determined by Jim Hambleton in Union County Survey 95-74.

Survey record states:

GLO corner has been destroyed, used fence and road intersection.

Corner was monumented by Gregory Blackman in 1993.

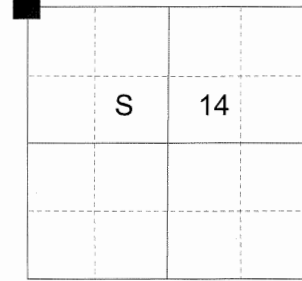
Union County Monumentation Record 045-1993R states:

Found spike at the position determined in survey 95-74. In place of spike, I set a 2 1/2" x 30" aluminum pipe with aluminum cap 31" in the ground, from which:

- A 5/8 x 30 inch rebar with aluminum cap bears South 83° East, 25.02 feet marked E RP.
- A 5/8 x 30 inch rebar with aluminum cap bears South 45° East, 33.18 feet marked SE RP.
- A 5/8 x 30 inch rebar with aluminum cap bears South 58° West, 67.95 feet marked SW RP.
- A 5/8 x 30 inch rebar with aluminum cap bears North 4° West, 25.46 feet marked NW RP.

Set a steel fence post approx. 11 ft. North with Attention sign attached.

T 1 N R 40 E J-17



**DESCRIPTION OF CORNER EVIDENCE FOUND:**

Found:

A 5/8" x 30" rebar with aluminum cap bears South 85° East, 25.00 feet marked E RP, which falls on the West edge of a fence corner.

A 5/8" x 30" rebar with aluminum cap bears South 47° East, 33.20 feet marked SE RP, which falls in fence line.

A 5/8" x 30" rebar with aluminum cap bears South 56° West, 67.95 feet marked SW RP, which falls on the edge of the road.

A 5/8" x 30" rebar with aluminum cap bears North 6° West, 25.45 feet marked NW RP, which falls on the South edge of a rock jack.

A fence post bears North approx. 11 ft. North with Attention sign attached.

Base rock, 1.5' deep for a driveway over the location of the corner.

It is assumed the monument was destroyed when the driveway was rebuilt.

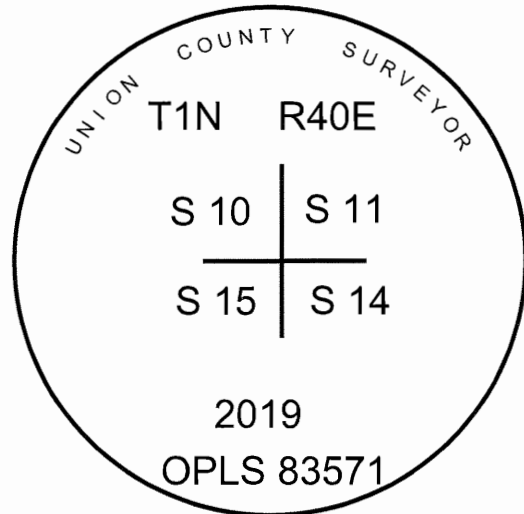
**DESCRIPTION OF MONUMENT AND ACCESSORIES I ESTABLISHED TO PERPETUATE THE ORIGINAL LOCATION OF THIS CORNER:**

From the found Bearing Objects, at record distance I set a 2 1/2" x 30" aluminum pipe, 31" in the ground, with 2 1/2" aluminum cap marked as shown.

Corner lies North East of South and West corner in Roulet Rd.

I hereby certify that the corner was perpetuated on January 22, 2019.

Witness: Kyle A. Tucker



Renewal Date: June 30, 2019

**UNION COUNTY SURVEYOR**

Date Received 1/29/19

Date Filed 1/29/19

Filed By [Signature]

File Number 005-2019R

I used a steel tape and magnetic compass in the establishment of the accessories. I used 13° East declination, the distances and bearings are to the center of the aluminum caps.

**CERTIFIED RECORD OF LAND CORNER MONUMENTATION**

**HISTORY OF ORIGINAL CORNER ESTABLISHED:**

Corner originally established by William Odell under GLO joint contract number 120 dated May 27, 1867. Surveyor General field notes state:

Set post for corner to secs. 10,11,14,15, drove charred stake and raised stone mound as per instructions.

The position of this corner was determined by Jim Hambleton in Union County Survey 95-74.

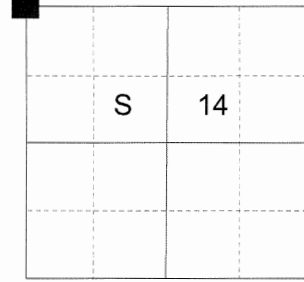
Survey record states:  
GLO corner has been destroyed, used fence and road intersection.

Corner was monumented by Gregory Blackman in 1993. Union County Monumentation Record 045-1993R states:  
Found spike at the position determined in survey 95-74. In place of spike, I set a 2 1/2" x 30" aluminum pipe with aluminum cap 31" in the ground, from which:

- A 5/8 x 30 inch rebar with aluminum cap bears South 83° East, 25.02 feet marked E RP.
- A 5/8 x 30 inch rebar with aluminum cap bears South 45° East, 33.18 feet marked SE RP.
- A 5/8 x 30 inch rebar with aluminum cap bears South 58° West, 67.95 feet marked SW RP.
- A 5/8 x 30 inch rebar with aluminum cap bears North 4° West, 25.46 feet marked NW RP.

Set a steel fence post approx. 11 ft. North with Attention sign attached.

T 1 N R 40 E J-17



**DESCRIPTION OF CORNER EVIDENCE FOUND:**

No Monument found. From corner position:

- A 5/8" rebar with aluminum cap bears South 85° East, 25.00 feet marked E RP, which falls on the West edge of a fence corner.
- A 5/8" rebar with aluminum cap bears South 47° East, 33.20 feet marked SE RP, which falls in fence line.
- A 5/8" rebar with aluminum cap bears South 56° West, 67.95 feet marked SW RP, which falls on the edge of the road.
- A 5/8" rebar with aluminum cap bears North 6° West, 25.45 feet marked NW RP, which falls on the South edge of a rock jack.

A fence post bears North approx. 11 ft. North with Attention sign attached.  
Base rock, 1.5' deep for a driveway over the location of the corner.

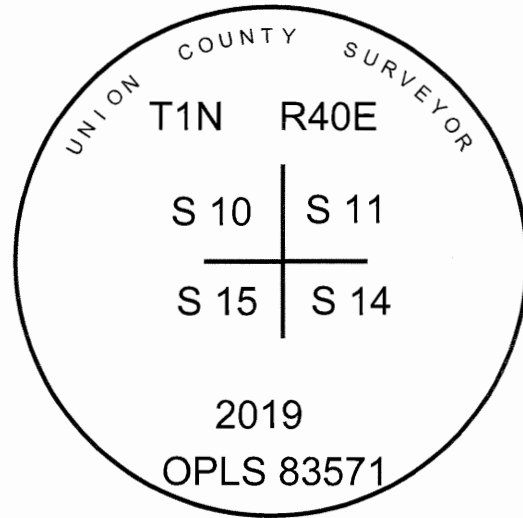
It is assumed the monument was destroyed when the driveway was rebuilt.

**DESCRIPTION OF MONUMENT AND ACCESSORIES I ESTABLISHED TO PERPETUATE THE ORIGINAL LOCATION OF THIS CORNER:**

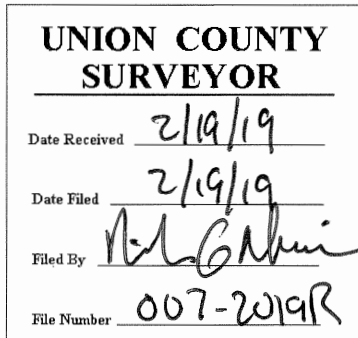
At record distance from found Bearing Objects, I set a 2 1/2" x 30" aluminum pipe, 31" in the ground, with 2 1/2" aluminum cap marked as shown.

Corner lies North East of South and West corner in Roulet Rd.

I hereby certify that the corner was perpetuated on January 22, 2019.  
Witness: Kyle A. Tucker



Renewal Date: June 30, 2019



I used a steel tape and magnetic compass in the establishment of the accessories. I used 13° East declination, the distances and bearings are to the center of the aluminum caps.

# HORIZONTAL CONTROL DATA

## UNION COUNTY, OREGON

### OREGON STATE PLANE, NORTH ZONE (3601)

STA NAME: 2019007

SECTION CORNER COMMON TO SECTIONS 10, 11, 14 AND 15

TWP. 1 N RGE. 40 E.

GEODETIC COORD: NAD 83(91)

DATE TIED: January 25, 2019

LAT: 45 ° 34 ' 23.314429 " N

SURVEYOR: RICK G. ROBINSON  
OPLS 2219

LONG: 117 ° 47 ' 15.55954 " W

FIRM: BAGETT, GRIFFITH, & BLACKMAN  
2006 ADAMS AVENUE  
LAGRANDE, OR 97850  
(541) 963-6092

SP. COOR: NAD 83(91)

N: 706713.282 INT FT.

E: 8896522.732 INT FT.

TYPE: GPS

THETA: 1 ° 55 ' 24.804636 "

ORDER: SECOND CLASS: 1

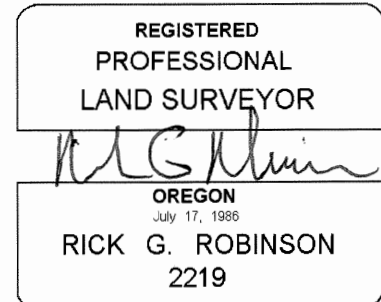
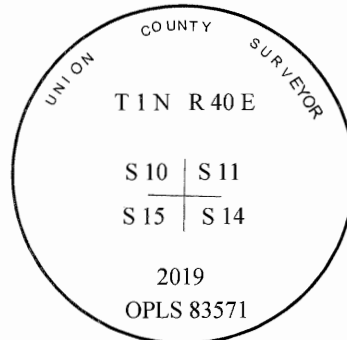
SCALE FACTOR: 0.9999194677

ELEV: 3617.26 US FT.

ELEV: DATUM: NGVD 29

COMMENTS:

2 1/2" Aluminum monument with  
aluminum cap marked as shown



Renewal Date: December 31, 2020

1 METER = 3.280833333... US FEET = 39.37 INCHES

1 METER = 3.280839895 INT'L FEET OR 1 INCH = 2.54 CM

TO CALCULATE ELEVATION FACTOR ( IN THE NORTH AMERICAN CONTINENT)

DIVIDE 20,906,000 BY (20,906,000 + ELLIPSOID ELEV. IN FEET)