

CERTIFIED RECORD OF LAND CORNER MONUMENTATION

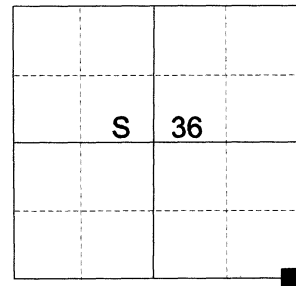
HISTORY OF ORIGINAL CORNER ESTABLISHED:

Corner originally established under GLO contract number 102 executed by Timothy W. Davenport, dated July 20th, 1863. Surveyor General field notes state:

Set post corner to secs. 1, 6, 31, & 36, Townships 1 & 2 North Ranges 39 & 40 East, made mound of rock.

In 1881 as part of GLO joint contract #382, Rufus S. Moore finds the corner in a retracement of the South line of the Township.

T 2 N R 39 E Z-25



DESCRIPTION OF CORNER EVIDENCE FOUND:

Found an ancient rock jack fence corner to East/South/West bearing fence lines. Upon excavation below said fence corner I find a 2 ft. diam. x 18" deep stone vault with an 10" x 20" protruding about 8" above a collar of stone, with a clear "CS" chiseled into the top but no other discernible marks.

SEE SURVEY NUMBER 028-2026

DESCRIPTION OF MONUMENT AND ACCESSORIES I ESTABLISHED TO MONUMENT THE ORIGINAL LOCATION OF THIS CORNER:

At position of the found stone, I set a 2 1/2" x 30" aluminum pipe, 18" in the ground and in a 3 ft. diam. mound of stone, with 3" aluminum cap marked as shown, from which:

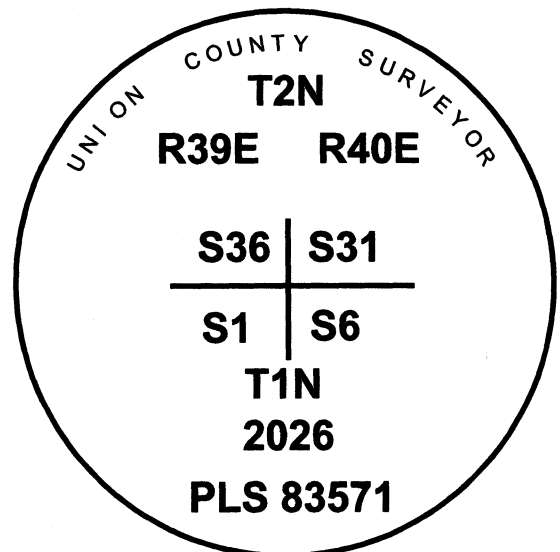
NEW BEARING OBJECTS:

A 5/8" x 30" iron pin bears North 54°28' East, a dist. of 32.45 ft., with 1 1/2" aluminum cap marked UNION COUNTY SURVEYOR NE RP.

A 5/8" x 30" iron pin bears South 57°02' East, a dist. of 21.62 ft., with 1 1/2" aluminum cap marked UNION COUNTY SURVEYOR SE RP.

A 5/8" x 30" iron pin bears South 50°52' West, a dist. of 9.60 ft., with 1 1/2" aluminum cap marked UNION COUNTY SURVEYOR SW RP.

A 5/8" x 30" iron pin bears North 12°53' West, a dist. of 29.54 ft., with 1 1/2" aluminum cap marked UNION COUNTY SURVEYOR NW RP.



I hereby certify that the corner was monumented on June 17th, 2026.

Witness: Kyle Tucker

REGISTERED
PROFESSIONAL
LAND SURVEYOR



OREGON
June 2, 2010
JEFFREY S. HSU
83571

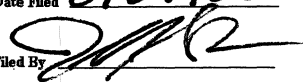
Renewal Date: June 30, 2027

I use a Leica GS 18I with RTK in the establishment of the new bearing objects. Basis of Bearing is OCRS La Grande. Bearings and distances are measured to the center of the aluminum caps.

UNION COUNTY
SURVEYOR

Date Received 6/24/26

Date Filed 6/24/26

Filed By 

File Number 022-2026R