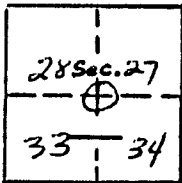


**RECOVERY NOTES
BOISE CASCADE CORP.
PROPERTY CORNER INVESTIGATION**

V-13
LOCATION



T. 1N R. 39E
Mer. WM State OR
Forest _____ Dist. _____
Compartment or Tract _____

LEGEND

- Corner searched-no evidence
- Corner or accessory found
- Corner marked by perm. mon.

DESCRIPTION OF FOUND CORNER

MATERIAL: NONE SIZE: _____
HEIGHT ABOVE GROUND: _____ CONDITION: _____
MARKINGS: _____

DESCRIPTION OF FOUND ACCESSORIES

Should be a rock. Someone has built a Rock wall Near where corner falls

Note: Indicate full investigative details on back of form and where cruise tag placed in reference to corner.

PHOTO IDENTIFICATION

Symbol & date _____ Line or Roll _____ Exposure _____
How Identified _____ Where filed _____

RECOVERED BY: EMH & RM

DATE: FALL 78 TITLE: _____

UNION COUNTY SURVEYOR	
Date Received	<u>1-4-88</u>
Date Filed	<u>1-7-88</u>
By	<u>G. LANGLITZ, DEPUTY</u>
File No.	<u>23-88R</u>

V-13

UNION COUNTY SURVEYOR

CERTIFIED RECORD OF LAND CORNER MONUMENTATION

HISTORY OF ORIGINAL CORNER ESTABLISHMENT:

Corner originally established by Joseph G. Gray under GLO contract Number 120, dated May 27, 1867. GLO record states:

Set post corner for section 20, 21, 28 & 29, deposited marked stone and raised stone mound as per instructions.

No record of further monumentation found in Union County survey records.

DESCRIPTION OF CORNER EVIDENCE FOUND:

Found no evidence of the original corner. Found a Rock Wall 3 ft. high running Northerly-Southerly. The rock wall is harmonious with the position of the Railroad to the East as located by survey recorded in the Old Book of Surveys on Page 263 by J.L. Curtis, Union County Surveyor.

See Survey Number 021-2010

DESCRIPTION OF MONUMENT AND ACCESSORIES I ESTABLISHED TO PERPETUATE THE ORIGINAL LOCATION OF THIS CORNER:

At the West edge of the rock wall and proportionate distance from the found corners to the North and South, I set a 2 1/2" x 30" aluminum pipe with cap, marked as shown, 21 inches in the ground from which:

NEW BEARING TREES:

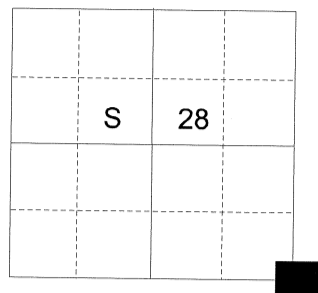
- A 17 inch diameter Ponderosa Pine bears N 14° E, a distance of 39.08 feet, marked T1N R39E S27 BT
- A 9 inch diameter Ponderosa Pine bears S 16° E, a distance of 35.87 feet, marked T1N R39E S34 BT
- A 29 inch diameter Ponderosa Pine bears S 27° W, a distance of 30.15 feet, marked T1N R39E S33 BT
- A 9 inch diameter Ponderosa Pine bears N 31° W, a distance of 20.67 feet, marked T1N R39E S28 BT

Raised mound of stone, 2 ft. base to top of cap.

I hereby certify that the corner was monumented on August 19, 2010.

Witness: Jeff Hsu

T 1 N R 39 E V-13

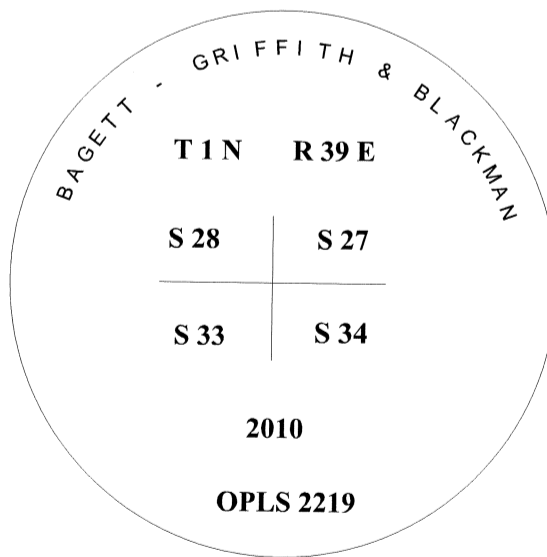


REGISTERED
PROFESSIONAL
LAND SURVEYOR

Rick G. Robinson

OREGON
July 17, 1986
RICK G. ROBINSON
2219

Renewal Date: December 31, 2010



UNION COUNTY SURVEYOR

Date Received 8/25/2010

Date Filed 8/25/2010

Filed By *Jeff T. Bla*

File Number 035-2010R

I used a steel tape and magnetic compass in the establishment of the bearing trees. I used 18° East magnetic declination and the distance is to a 50d nail set in the right side of the root crown. I set a brass washer marked OPLS 2219 on the BT blaze.

HORIZONTAL CONTROL DATA

UNION COUNTY, OREGON

OREGON STATE PLANE, NORTH ZONE (3601)

STA NAME: 2018020

SECTION CORNER COMMON TO SECTIONS 27, 28, 33 AND 34

TWP. 1 N RGE. 39 E.

GEODETIC COORD: NAD 83(91)

DATE TIED: February 23, 2018

LAT: 45 ° 31 ' 44.67720 " N

SURVEYOR: RICK G. ROBINSON
OPLS 2219

LONG: 117 ° 55 ' 57.08890 " W

FIRM: BAGETT, GRIFFITH, & BLACKMAN
2006 ADAMS AVENUE
LAGRANDE, OR 97850
(541) 963-6092

SP. COOR: NAD 83(91)

N: 689442.547 INT FT.

E: 8859956.194 INT FT.

TYPE: GPS

THETA: 1 ° 49 ' 14.9433048 "

ORDER: SECOND CLASS: 1

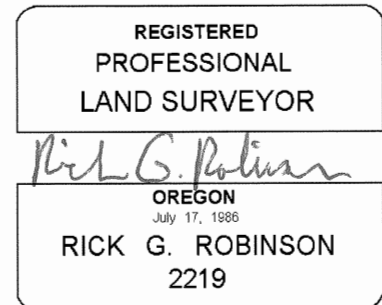
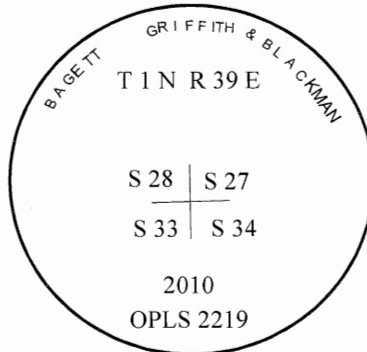
SCALE FACTOR: 0.9999143348

ELEV: 3160.22 US FT.

ELEV: DATUM: NGVD 29

COMMENTS:

2 1/2" aluminum monument with cap marked as shown, set in mound of stone.



Renewal Date: December 31, 2018

1 METER = 3.2808333333... US FEET = 39.37 INCHES

1 METER = 3.280839895 INT'L FEET OR 1 INCH = 2.54 CM

TO CALCULATE ELEVATION FACTOR (IN THE NORTH AMERICAN CONTINENT)

DIVIDE 20,906,000 BY (20,906,000 + ELLIPSOID ELEV. IN FEET)