

UNION COUNTY SURVEYOR

CERTIFIED RECORD OF LAND CORNER MONUMENTATION

HISTORY OF ORIGINAL CORNER ESTABLISHMENT:

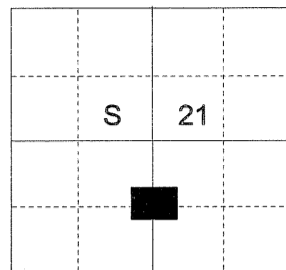
Corner not previously established.

No record of monumentation found in Union County survey records.

T 1 N R 39 E Q-11

DESCRIPTION OF CORNER EVIDENCE FOUND:

NONE



See Survey Number 033-2004

DESCRIPTION OF MONUMENT AND ACCESSORIES I ESTABLISHED TO PERPETUATE THE ORIGINAL LOCATION OF THIS CORNER:

At position determined by survey, I set a 5/8" x 30" iron pin with 2 1/2" aluminum cap, marked as shown, 26 inches in the ground from which:

NEW BEARING TREES:

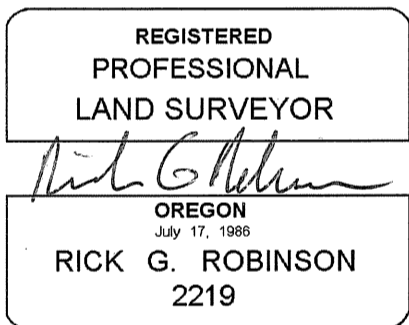
A 10 inch diameter Douglas Fir bears S 75° W, a distance of 33.10 feet, marked CS 1/16 S21 BT

A 6 inch diameter Ponderosa Pine bears N 56° W, a distance of 20.30 feet, marked X BT

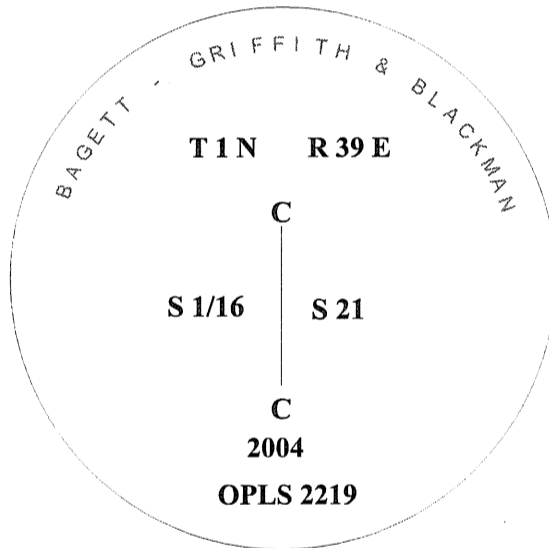
Set steel fence post approximately 1 ft. North of corner monument.

I hereby certify that the corner was monumented on November 9, 2004.

Witnesses: Greg Blackman, Jr. and Rick Thew



Renewal Date December 31, 2004



UNION COUNTY SURVEYOR

Date Received 11/15/04

Date Filed 11/16/04

Filed By Gregory T. Blackman

File Number 057-2004R

I used a steel tape and magnetic compass in the establishment of the new bearing trees. I used 18° East magnetic declination and the distance is to a 50d nail set in the right side of the root crown. I set a brass washer marked OPLS 2219 on the BT blaze.