

CERTIFIED RECORD OF LAND CORNER MONUMENTATION

HISTORY OF ORIGINAL CORNER ESTABLISHMENT:

Corner not previously established.

No record of monumentation found in Union County survey records.

T 1 N R 39 E Q-09

DESCRIPTION OF CORNER EVIDENCE FOUND:

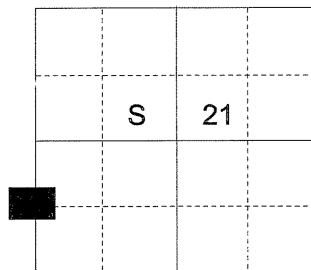
NONE

See Survey Number 033-2004

DESCRIPTION OF MONUMENT AND ACCESSORIES I ESTABLISHED

TO PERPETUATE THE ORIGINAL LOCATION OF THIS CORNER:

At position determined by survey, I set a 5/8" x 30" iron pin with 2 1/2" aluminum cap, marked as shown, 26 inches in the ground from which:



NEW BEARING OBJECTS:

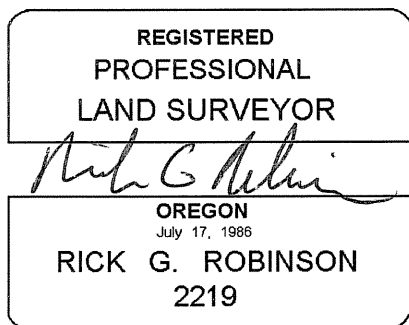
A 5/8 inch iron pin with 2 inch aluminum cap marked "BGB SURVEY MARKER SE RP" bears S 64°38' E, a distance of 20.72 feet, (Set in East-West fence line).

A 5/8 inch iron pin with 2 inch aluminum cap marked "BGB SURVEY MARKER SE RP" bears S 80°40' W, a distance of 34.33 feet, (Set near fence corner with fences running North and East).

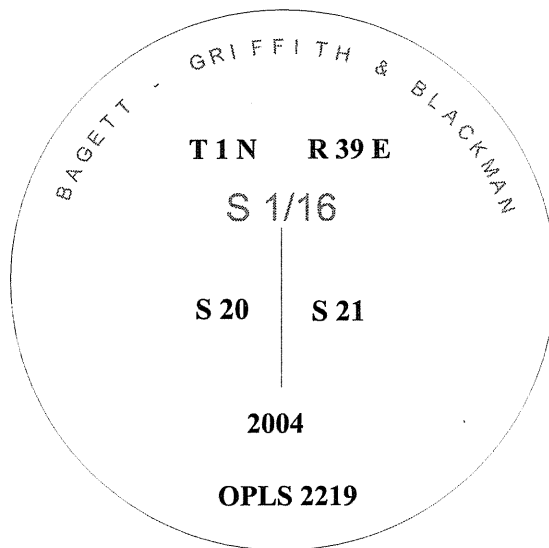
Set steel fence post approximately 1 ft. North of corner monument.

I hereby certify that the corner was monumented on October 7, 2004.

Witness: Greg Blackman, Jr.



Renewal Date December 31, 2004



UNION COUNTY SURVEYOR

Date Received 11/15/04

Date Filed 11/16/04

Filed By [Signature]

File Number 055-2004R

I used Leica GPS 530 in the establishment of the new bearing objects. The basis of bearing is that of survey number 033-2004. Distances are to the center of the bearing objects.