

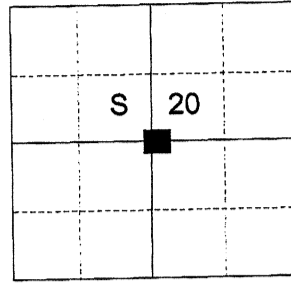
CERTIFIED RECORD OF LAND CORNER MONUMENTATION

HISTORY OF ORIGINAL CORNER ESTABLISHED:

Corner not previously established.

Union County Survey 013-2022 shows a record position but no monumentation of the corner.

T 1 N R 39 E P-07



DESCRIPTION OF CORNER EVIDENCE FOUND:

None.

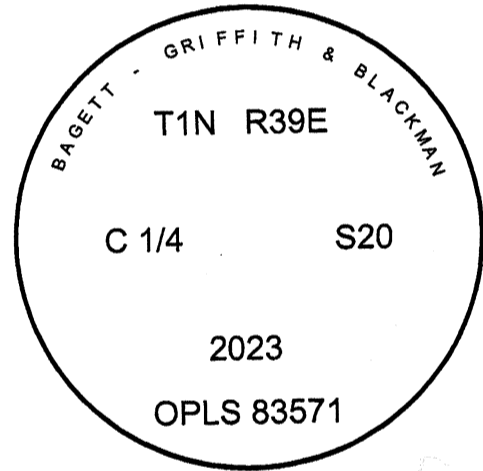
SEE SURVEY NUMBER 009-2024

DESCRIPTION OF MONUMENT AND ACCESSORIES I ESTABLISHED TO MONUMENT THE ORIGINAL LOCATION OF THIS CORNER:

At position by survey I set a 2 1/2" x 30" aluminum pipe, 29" in the ground, with 3" aluminum cap marked as shown below, from which

NEW BEARING OBJECTS:

- A 5" diam. Ponderosa Pine bears North 31° East, a dist. of 19.60 feet, marked C1/4 S20 BT
- A 8" diam. Ponderosa Pine bears South 29° East, a dist. of 25.80 feet, marked C1/4 S20 BT
- A 6" diam. White Fir bears South 40° West, a dist. of 39.50 feet, marked C1/4 S20 BT
- A 6" diam. Douglas Fir bears North 7° West, a dist. of 9.45 feet, marked C1/4 S20 BT

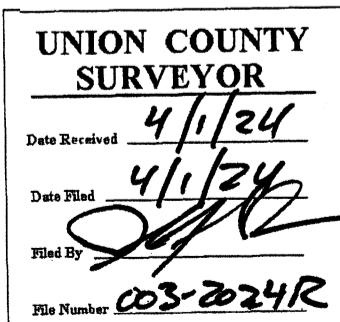


I hereby certify that the corner was monumented on September 15, 2023.



Renewal Date: June 30, 2025

I used a tape and compass in the establishment of the new accessories. Bearing is measured to a brass washer labeled OPLS 83571 located at the center of BT blaze, with a declination of 14° East. Distance is measured to a 60d spike nailed to the right side base of tree.



P-07