

UNION COUNTY SURVEYOR

CERTIFIED RECORD OF LAND CORNER MONUMENTATION

HISTORY OF ORIGINAL CORNER ESTABLISHMENT:

Corner not previously established.

No record of monumentation found in Union County survey records.

DESCRIPTION OF CORNER EVIDENCE FOUND:

NONE

See Survey Number 033-2004

DESCRIPTION OF MONUMENT AND ACCESSORIES I ESTABLISHED TO PERPETUATE THE ORIGINAL LOCATION OF THIS CORNER:

At position determined by survey, I set a 5/8" x 30" iron pin with 2 1/2" aluminum cap, marked as shown, 29 inches in the ground from which:

NEW BEARING OBJECTS:

An 8 inch diameter Douglas Fir bears N 57°51' E, a distance of 31.74 feet, marked N 1/16 S21 BT

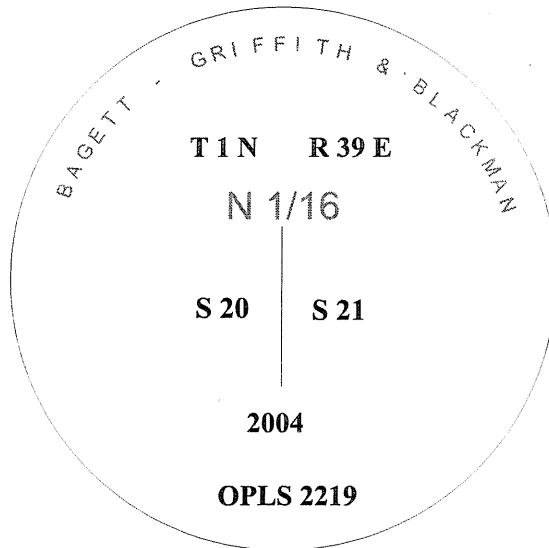
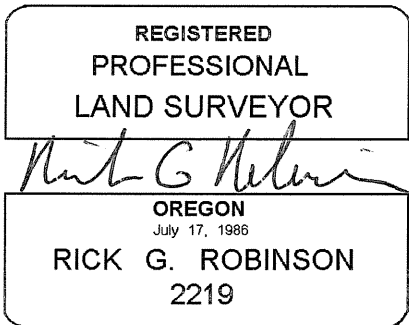
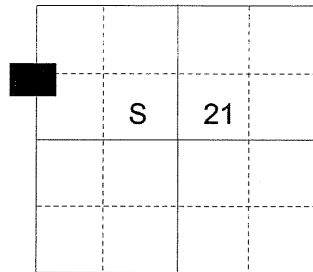
An 9 inch diameter Douglas Fir bears S 20°00' W, a distance of 42.60 feet, marked N 1/16 S20 BT

Set steel fence post approximately 1 ft. North of corner monument.

I hereby certify that the corner was monumented on October 29, 2004.

Witnesses: Greg Blackman, Jr. and Rick Thew

T 1 N R 39 E O-09



UNION COUNTY SURVEYOR

Date Received 11/15/04

Date Filed 11/16/04

Filed By Gregory T. Blackman

File Number 048-2004R

I used Leica TCA 1100 Total Station instrument in the establishment of the new bearing trees. The basis of bearing is that of survey number 033-2004. Distance is to a 50d nail set in the right side of the root crown. I set a brass washer marked OPLS 2219 on the BT blaze.