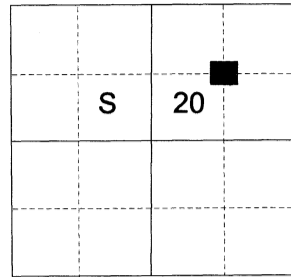


CERTIFIED RECORD OF LAND CORNER MONUMENTATION

HISTORY OF ORIGINAL CORNER ESTABLISHED:

Corner not previously established.

T 1 N R 39 E O-08



DESCRIPTION OF CORNER EVIDENCE FOUND:

None Found.

SEE SURVEY NUMBER 013-2022

DESCRIPTION OF MONUMENT AND ACCESSORIES I ESTABLISHED TO MONUMENT THE ORIGINAL LOCATION OF THIS CORNER:

At the position by Survey I set a 5/8" x 20" iron pin, drilled 18" into rock, with 2 1/2" aluminum cap marked as shown, with 2' diameter collar of stone, from which:

NEW BEARING OBJECTS:

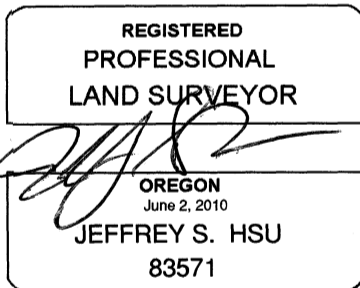
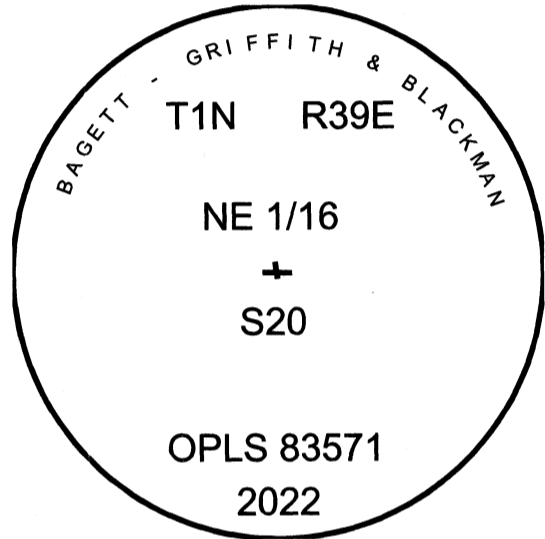
A 5/8" x 15" iron pin bears North 43°53' East, a dist. of 14.65 feet, with 1 1/2" aluminum cap marked "BGB SURVEY MARKER NE RP".

A 5/8" x 15" iron pin bears South 28°52' East, a dist. of 17.85 feet, with 1 1/2" aluminum cap marked "BGB SURVEY MARKER SE RP".

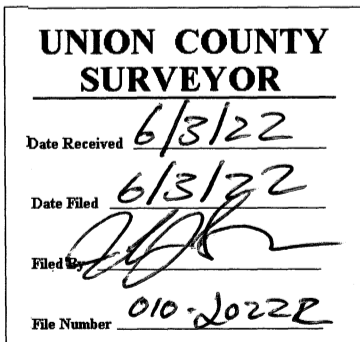
Set steel fence post approx. 1 ft. East

Falls approx. 50 ft. North of Pumpkin Ridge Road and approx. 30 ft. Northwesterly of fence corner to North, East, and West bearing fence lines.

I hereby certify that the corner was monumented on April 29, 2022.
Witness: Kyle A. Tucker



Renewal Date: June 30, 2023



I used a LEICA GS18 with RTK in the establishment of the new accessories. Basis of Bearing is as per Survey 013-2022. Bearings and Distances are measured to the centers of the aluminum caps.