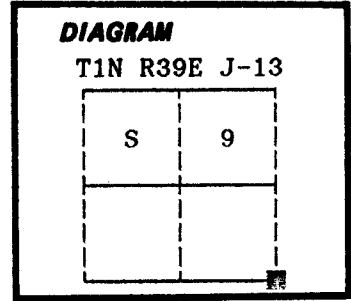


CERTIFIED RECORD OF LAND CORNER MONUMENTATION

History of original corner establishment:

Corner originally established by Joseph G. Gray and William H. Odell under joint GLO contract number 120, dated May 27, 1867. Surveyor General record states: Set post corner for secs 9, 10, 15 & 16. Drove charred stake, dug pits and raised mound of stone as per instructions.

Survey numbers 56-74, 31-75, 36-77, 48-77, 96-77, 150-78, 2-79, 26-79, 17-80, 45-80, 43-81, 45-81, 68-81, 75-81 and 3-83 all call finding a brass cap monument.



No record of subsequent monumentation found in Union County survey records.

Description of corner evidence found:

Found a brass cap monument as found in the previously mentioned surveys. Recent road construction has buried this monument to a depth of 3 feet.

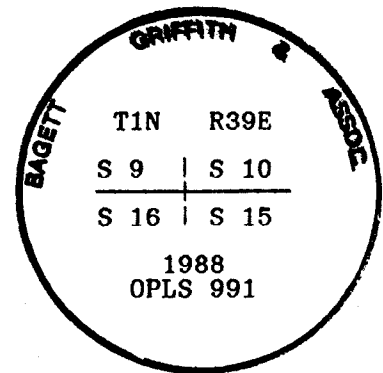
See survey number 7-88

Description of monument and accessories | established to perpetuate the original location of this corner:

Directly over the found brass cap monument, I set a 2½" x 30" aluminum pipe with aluminum cap marked as shown, set in a water valve box in the Southerly edge of old of County Road Number 42 (Elgin-Palmer Junction Road).

I hereby certify that the above corner point was perpetuated as hereon described on February 25, 1988.

Witness: Rick Robinson



**REGISTERED
PROFESSIONAL
LAND SURVEYOR**

Gregory T. Blackman

OREGON
JULY 13, 1973
GREGORY T. BLACKMAN
991

**UNION COUNTY
SURVEYOR**

Date Received 3-14-88

Date Filed 3-16-88

By G. LANGLITZ, DEPUTY

File No. 69-88R

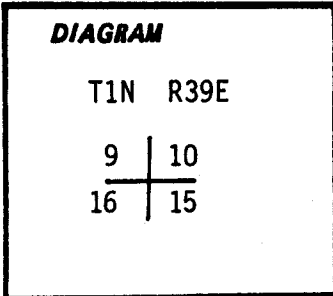
Office of..... County of.....
 State of....., I hereby certify that the within instrument was filed in this office
 for record on the..... day of....., 19.....
 by
 (COUNTY OFFICIAL) (DEPUTY)

5-13

CERTIFIED RECORD OF LAND CORNER MONUMENTATION

History of original corner establishment:

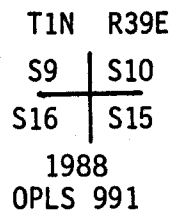
Refer to Remonumentation Record 69-88R for a description of the original survey monument and for a recitation of subsequent survey activity at this corner location.



Description of corner evidence found:

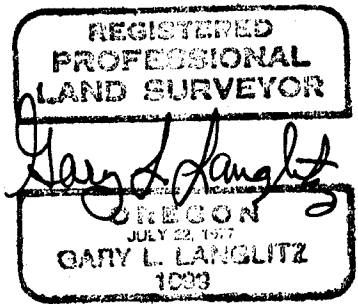
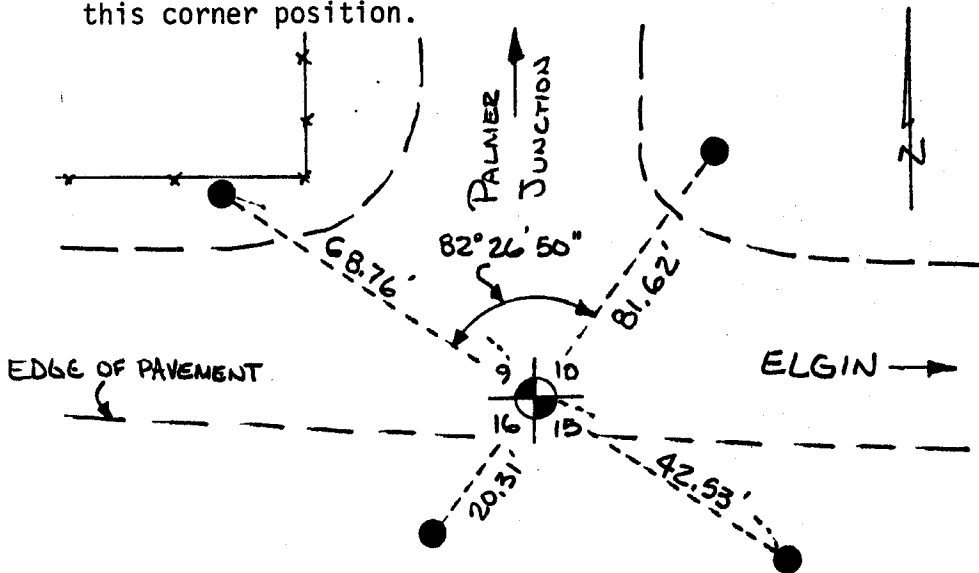
Found an aluminum pipe with cap marked:
Set 4 inches below the asphalt roadway surface and enclosed in a cast iron water valve cover. The water valve cover lid is missing and the case has been broken.

BAGETT-GRIFFITH & ASSOC.



Description of monument and accessories I established to perpetuate the original location of this corner:

Due to construction activities along this roadway, the existing monument must be removed. Therefore, I set the following reference monuments to preserve this corner position.



UNION COUNTY SURVEYOR
Date Received <u>6-2-88</u>
Date Filed <u>6-2-88</u>
By <u>G. LANGLITZ, DEPUTY</u>
File No. <u>76-88 R</u>

All reference monuments are 5/8" x 30" iron rods with yellow plastic caps marked "AP&A".

May 17, 1988 Gary L. Langlitz, LS 1099
Mark Slater

Office of..... County of.....
State of....., I hereby certify that the within instrument was filed in this office
for record on the..... day of....., 19.....
..... by

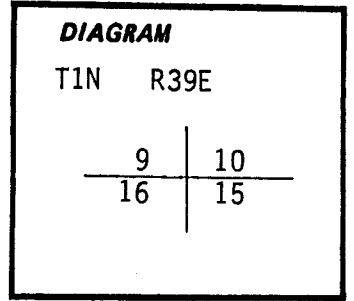
(COUNTY OFFICIAL)

(DEPUTY)

CERTIFIED RECORD OF LAND CORNER MONUMENTATION

History of original corner establishment:

Refer to Union County Remonumentation Records 69-88R and 76-88R for a record of survey activities at this corner.



Description of corner evidence found:

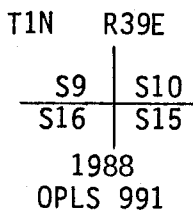
As indicated in Remonumentation Record 76-88R, road construction activities have occurred at this site. The aluminum monument established per Remonumentation Record 69-88R has been removed and was deposited along the fence near the corner location.

The four iron rod references established in Remonumentation Record 76-88R were found intact and in agreement with the record.

Description of monument and accessories I established to perpetuate the original location of this corner:

At the corner position as re-established from the found iron rod reference points, we reset the found aluminum monument, a 2"x30" aluminum pipe with aluminum cap marked:

Bagett-Griffith & Associates

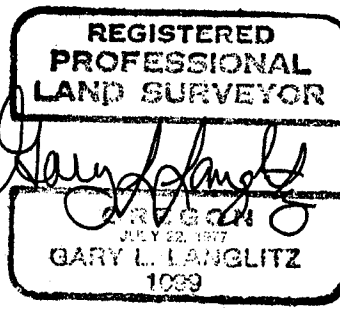


We added the markings "Reset 88 PLS 1099" to the aluminum cap.

The aluminum cap is located 3" below the asphalt road surface, 2.5 feet north of the south edge of the roadway, and is accessible through an aluminum monument cover set flush in the asphalt surface.

July 27, 1988

Ed A. Stryker, LS 2060
Brad Perry



UNION COUNTY SURVEYOR	
Date Received	<u>8-3-88</u>
Date Filed	<u>8-3-88</u>
By	<u>G. LANGLITZ, DEPUTY</u>
File No.	<u>87-88R</u>

Office of..... County of.....
State of....., I hereby certify that the within instrument was filed in this office
for record on the..... day of....., 19.....

..... by
(COUNTY OFFICIAL) (DEPUTY)

HORIZONTAL CONTROL DATA

**UNION COUNTY, OREGON
OREGON STATE PLANE, NORTH ZONE (3601)**

STA. NAME: 9203

QUARTER SECTION: SE. COR.

GEODETIC COOR: NAD 83(91)

SEC. 9 TWP 1 N RGE 39 E

LAT: 45 34'20.93054" N

DATE SURVEYED: MAY, 19, 1992

LONG: 117 55'57.15506" W

SURVEYOR: WALTER L. CASWELL
PLS 737

SP. COOR: NAD 83(91)

FIRM: EAGLE GPS SURVEY CORP
13545 NW SCIENCE PARK DR
PORTLAND, OR. 97229
(503) 643-1073

N: 705259.856 Int.Ft.

E: 8859448.654 Int.Ft.

THETA: 1 49'14.896"

TYPE: GPS

SCALE FACTOR: 0.999919386

ORDER: SECOND CLASS: 1

ELEV: 2754.97 US.Ft.

ELEV. DATUM: NGVD 29

DIRECTIONS "TO REACH"

From the Elgin Post Office travel West on Division Street (Highway 204) a distance of about one block (you will cross railroad tracks) then turn North onto N 10th Avenue. After travelling 0.5 miles you will come to an intersection with Hartford Lane and must either turn left or right. Turn left onto

Hartford Lane, travel West 0.70 miles and you will reach an intersection with Middle Road which takes off to the North. You will find the monument on the shoulder of Hartford Lane on the South side of the intersection in a Bernstein Monument box in the asphalt (similar to a water valve box).