

CERTIFIED RECORD OF LAND CORNER MONUMENTATION

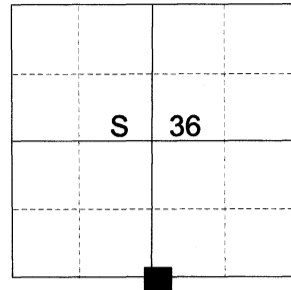
HISTORY OF ORIGINAL CORNER ESTABLISHED:

Corner originally established under GLO contract number 102 executed by Timothy W. Davenport, dated July 20th, 1863. Surveyor General field notes state:

Set qr. sec. post, on top of ridge, made mound of earth and drove charred stake as per inst. In 1881 as part of GLO joint contract #382, Rufus S. Moore finds the 1/4 corner in a retracement of the South line of the Township.

Survey for Road Petition #407 indicates a corner in the right of way at this location.

T 2 N R 39 E Z-23



DESCRIPTION OF CORNER EVIDENCE FOUND:

Found an abandoned road with right of way fences coming from the South into an East/West fence. Landowner attests to the road being abandoned when they moved Parsons Lane to its current position. The fence was thereafter placed in the middle of the road going East/West at the time.

SEE SURVEY NUMBER 028-2026

DESCRIPTION OF MONUMENT AND ACCESSORIES I ESTABLISHED TO MONUMENT THE ORIGINAL LOCATION OF THIS CORNER:

At the centerline of the abandoned road and the East/West fence line, I set a 2 1/2" x 30" aluminum pipe, 31" in the ground, with 3" aluminum cap marked as shown, from which:

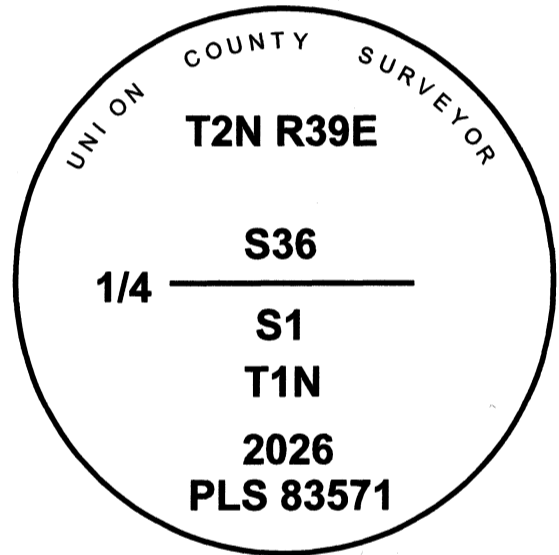
NEW BEARING OBJECTS:

A 5/8" x 30" iron pin bears North 74°21' East, a dist. of 19.32 ft., with 1 1/2" aluminum cap marked UNION COUNTY SURVEYOR NE RP.

A 5/8" x 30" iron pin bears South 31°20' East, a dist. of 44.90 ft., with 1 1/2" aluminum cap marked UNION COUNTY SURVEYOR SE RP.

A 5/8" x 30" iron pin bears South 29°38' West, a dist. of 37.02 ft., with 1 1/2" aluminum cap marked UNION COUNTY SURVEYOR SW RP.

A 5/8" x 30" iron pin bears North 74°14' West, a dist. of 20.24 ft., with 1 1/2" aluminum cap marked UNION COUNTY SURVEYOR NW RP.



I hereby certify that the corner was monumented on June 17th, 2026.

Witness: Kyle Tucker

REGISTERED
PROFESSIONAL
LAND SURVEYOR

OREGON
June 2, 2010
JEFFREY S. HSU
83571

Renewal Date: June 30, 2027

I use a Leica GS 18I with RTK in the establishment of the new bearing objects. Basis of Bearing is OCRS La Grande. Bearings and distances are measured to the center of the aluminum caps.

UNION COUNTY
SURVEYOR
Date Received 6/24/26
Date Filed 6/24/26
Filed By
File Number 021-2026R