

**CERTIFIED RECORD OF LAND CORNER MONUMENTATION**

**HISTORY OF ORIGINAL CORNER ESTABLISHED:**

Corner originally established under GLO contract number 102 executed by Timothy W. Davenport, dated July 20th, 1863. Surveyor General field notes state:

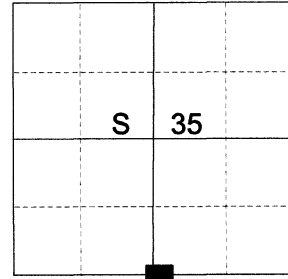
Comes near the West bank of said river and as the ground on this bank is low and boggy I construct a mound of Earth depositing charred stake as per inst., 150 lks. Eastward on true line on East bank of river.

Corner reestablished under GLO joint contract number 382 executed by Rufus S. Moore dated March 23<sup>rd</sup> 1881. Surveyor General field notes state:

The witness 1/4 sec. cor. having been obliterated.

At 41.50 chs. (East from sec. cor. 2, 3, 34, and 35): Set post 12 in. in ground drove charred stake mound of earth with pits as per instructions for witness for 1/4 sec. cor.

T 2 N R 39 E Z-19



**DESCRIPTION OF CORNER EVIDENCE FOUND:**

Position of witness corner falls in the Grande Ronde River. A fence line extends to the East from the East bank of the river.

SEE SURVEY NUMBER 028-2026

**DESCRIPTION OF MONUMENT AND ACCESSORIES I ESTABLISHED TO MONUMENT THE ORIGINAL LOCATION OF THIS CORNER:**

At proportionate position, I set a 2 1/2" x 30" aluminum pipe, 30" in the ground, with 2 ft. collar of stone, and aluminum cap marked as shown, from which:

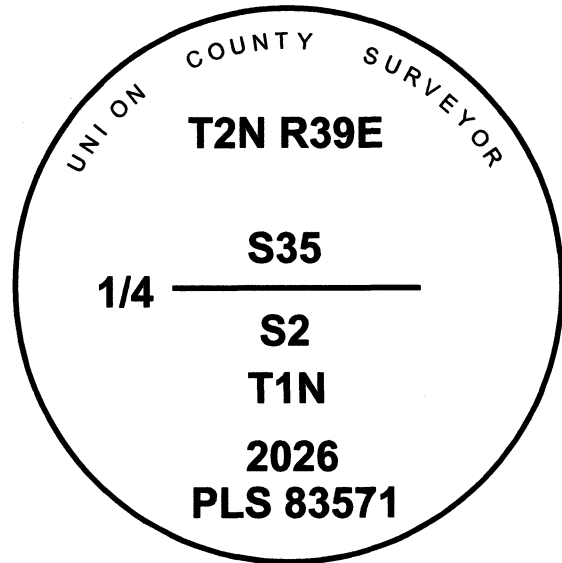
**NEW BEARING OBJECTS:**

A 5/8" x 15" iron pin bears North 52°27' East, a dist. of 31.42 ft., with 1 1/2" aluminum cap marked UNION COUNTY SURVEYOR NE RP.

A 5/8" x 15" iron pin bears South 24°52' East, a dist. of 24.95 ft., with 1 1/2" aluminum cap marked UNION COUNTY SURVEYOR SE RP.

A 5/8" x 15" iron pin bears South 61°06' West, a dist. of 27.25 ft., with 1 1/2" aluminum cap marked UNION COUNTY SURVEYOR SW RP.

A 5/8" x 15" iron pin bears North 22°37' West, a dist. of 22.46 ft., with 1 1/2" aluminum cap marked UNION COUNTY SURVEYOR NW RP.



REGISTERED  
PROFESSIONAL  
LAND SURVEYOR

*Jeffrey S. Hsu*  
OREGON  
June 2, 2010  
JEFFREY S. HSU  
83571

Renewal Date: June 30, 2027

I hereby certify that the corner was monumented on June 17th, 2026.

Witness: Kyle Tucker

I use a Leica GS 18I with RTK in the establishment of the new bearing objects. Basis of Bearing is OCRS La Grande. Bearings and distances are measured to the center of the aluminum caps.

UNION COUNTY  
SURVEYOR  
Date Received 6/24/26  
Date Filed 6/24/26  
Filed By *Jeffrey S. Hsu*  
File Number 019-2026R