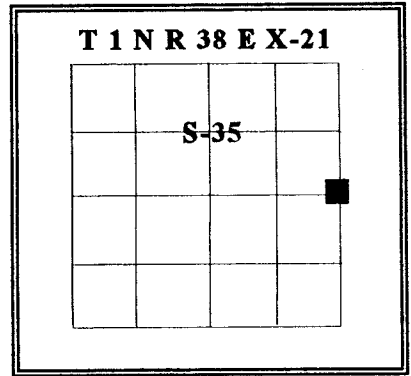


**CERTIFIED RECORD OF LAND CORNER MONUMENTATION**

**HISTORY OF ORIGINAL CORNER ESTABLISHMENT:**

Corner originally established by Joseph G. Gray on a joint venture with O'Dell under GLO contract Number 120, dated May 27, 1867. Surveyor General record states:

I set post for quarter section corner, deposited marked stone.



No record of subsequent monumentation found in the Union County Survey records.

**DESCRIPTION OF CORNER EVIDENCE FOUND:**

None. Position is in a north-south fence line, 5 feet north of a ditch.

See Map of Survey Number 022-1997.

**DESCRIPTION OF MONUMENT AND ACCESSORIES I ESTABLISHED TO PERPETUATE THE ORIGINAL LOCATION OF THIS CORNER:**

At proportionate position determined by survey, in an existing north-south fence line, I set a 2-1/2 inch by 30 inch aluminum pipe with aluminum cap marked as shown, 29 inches in the ground.

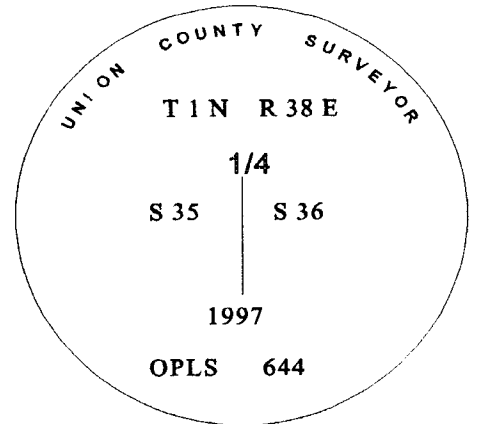
From which, new B Os;

- A 5/8" by 30" rebar bears N 54°E, 13.45 feet, with 1-1/2" aluminum cap marked "UCS NE RP".
- A 5/8" by 30" rebar bears S 48°E, 14.00 feet, with 1-1/2" aluminum cap marked "UCS SE RP".
- A 5/8" by 30" rebar bears S 49°W, 17.35 feet, with 1-1/2" aluminum cap marked "UCS SW RP".
- A 5/8" by 30" rebar bears N 87°W, 13.40 feet, with 1-1/2" aluminum cap marked "UCS NW RP".

Drove steel fence post 1 foot north of monument.

I hereby certify that the above corner point was perpetuated as hereon described on July 17, 1997.

Witnessed by: Jeff Madsen  
Greg Blackman Jr.



*Renewal Date July 30, 1999*

I used a steel tape and magnetic compass in the establishment of new accessories. I used 18° east declination and the measurement was taken to the center of the aluminum cap on the rebar.

UNION COUNTY SURVEYOR

Date Surveyed 8-28-97

Date of 9-13-97

By Gregory J. Blackman

File No. 039-1997R

**GEODETTIC CONTROL DATA**

**OREGON STATE PLANE, NORTH ZONE (3601)  
UNION COUNTY, OREGON**

\*\*\*\*\*

STA. NAME: 9903

QUARTER CORNER: GEODETTIC COOR: NAD 83(91)

SEC. 35 | 36 , TWP.1 N. RGE.38 E LAT: 45:31'19.1484" N

UNION COUNTY, OREGON

DATE TIED: JULY, 1999 LONG: 118:00'54.6343" W

SURVEYOR: WALTER L. CASWELL SP. COOR: NAD 83(91)

PLS 737

N: 686196.034 INT.FT

FIRM: EAGLE GPS SURVEY CORP  
6110 SW LOMBARD AVE.  
BEAVERTON, OR. 97008-4736  
(503) 643-1073

E: 8838864.951 INT.FT.

THETA: 1:45'44.021"

TYPE: GPS SCALE FACTOR: 0.999913561

ORDER: SECOND CLASS: 1 ELEV: 2861.63 U.S.FT.

ELEV. DATUM: NGVD 1929(1947)

\*\*\*\*\*

DIRECTIONS "TO REACH":



*Albert Hertel 10-14-99*



EXPIRES: 06/30/01

1 METER = 3.280833... U.S. FEET = 39.37 INCHES EXACTLY  
1 METER = 3.280839895 INTL. FEET OR 1 INCH = 2.54CM. EXACTLY  
TO CALCULATE ELEVATION FACTOR (IN THE NORTH AMERICAN CONTINENT)  
DIVIDE 20,906,000 BY (20,906,000 + ELLIPSOID ELEV. IN FEET)

JOB 99-005  
SHEET 24 OF 63