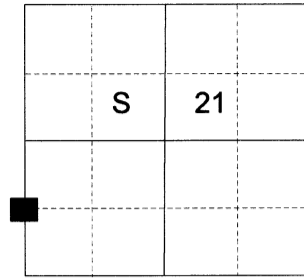


CERTIFIED RECORD OF LAND CORNER MONUMENTATION

HISTORY OF ORIGINAL CORNER ESTABLISHED:

Corner not previously established

T 1 N R 38 E Q-09



DESCRIPTION OF CORNER EVIDENCE FOUND:

None Found

SEE SURVEY NUMBER 042-2021

DESCRIPTION OF MONUMENT AND ACCESSORIES I ESTABLISHED TO MONUMENT THE ORIGINAL LOCATION OF THIS CORNER:

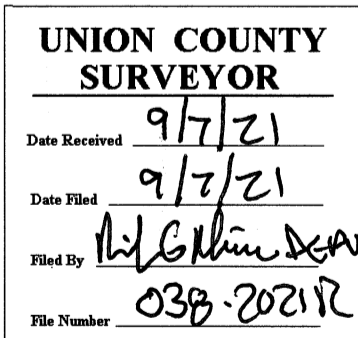
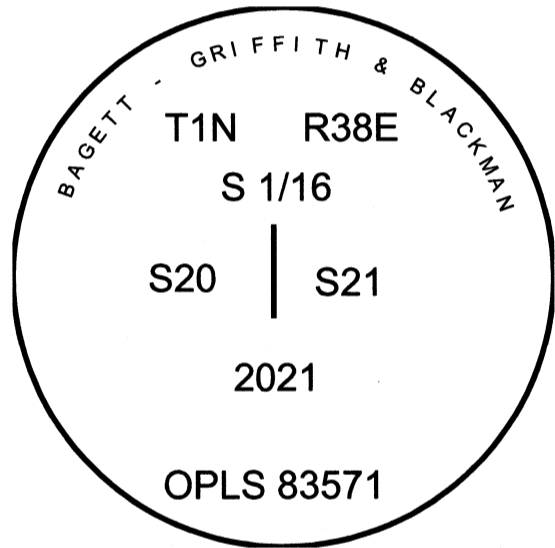
At position by survey I set a 5/8" x 30" iron pin, 27" in the ground, with 2 1/2" aluminum cap marked as shown below, from which:

NEW BEARING OBJECTS:

A 10" White Fir bears North 80° East a dist. of 21.65 ft., marked S 1/16 S21 BT.
An 18" Western Larch bears North 16° West a dist. of 46.05 ft., marked S 1/16 S20 BT.

Set steel fence post approx. 0.5 ft. South

I hereby certify that the corner was monumented on September 1, 2021.
Witness: Kyle A. Tucker



I used a steel tape and magnetic compass in the establishment of the new accessories. I used 14° East declination, the distances are to a 60d spike driven into the right side of the root crown of the bearing trees. A brass washer marked OPLS 83571 is attached to the BT blaze of the new bearing trees.