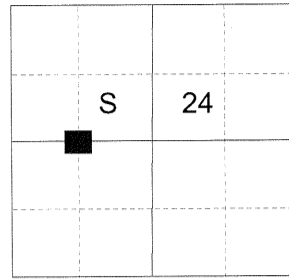


CERTIFIED RECORD OF LAND CORNER MONUMENTATION

HISTORY OF ORIGINAL CORNER ESTABLISHED:

None.

T 1 N R 38 E P-22



DESCRIPTION OF CORNER EVIDENCE FOUND:

None.

SEE SURVEY NUMBER 008-2019

DESCRIPTION OF MONUMENT AND ACCESSORIES I ESTABLISHED TO MONUMENT THE ORIGINAL LOCATION OF THIS CORNER:

At the position by survey I set a 5/8"x22" iron pin, drilled 4" into bedrock, with 2 1/2" aluminum cap marked as shown below, in a collar of stone 2' diam, from which:

NEW BEARING OBJECTS:

A 5/8"x15" iron pin bears South 0°16' West, a distance of 23.15 feet, with 1 1/2" aluminum cap marked SW RP.

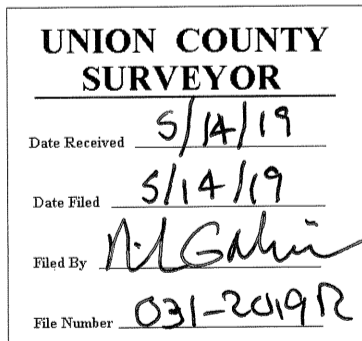
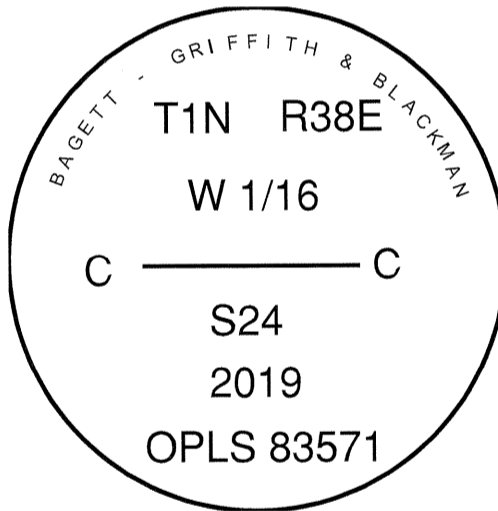
A 5/8"x30" iron pin bears North 0°04' East, a distance of 50.00 feet, with 1 1/2" aluminum cap marked NE RP.

Fence corner from which fences bears North, South and West falls South of monument approximately 50 feet. North/South fenceline falls East of monument approx. 10 ft.

I hereby certify that the corner was monumented on May 7, 2019.
Witness: Kyle A. Tucker.



Renewal Date: June 30, 2019



I used a Leica GS 18 RTK GPS in the establishment of the accessories. Basis of Bearing is as per Survey 008-2019. Bearings and distances are to the center of the aluminum cap.