

CERTIFIED RECORD OF LAND CORNER MONUMENTATION

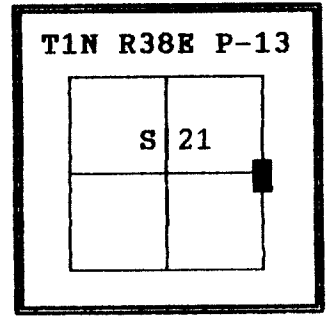
HISTORY OF ORIGINAL CORNER ESTABLISHMENT:

Corner originally established by Joseph G. Gray on a joint venture with O'Dell under GLO contract Number 120, dated May 27, 1867. Surveyor General record states:

Set 1/4 section corner post from which:

- A pine 36 inches in diameter, bears N 40° W, 10 lks.
- A pine 6 inches in diameter, bears S 65° E, 92 lks.

The post was replaced by Kimbrell in 1891, Kimbrell states: I set stone 18" X 10" X 7" marked $\frac{1}{4}$ on W face. I mark a Fir 14 ins dia brs S 77° E, 55 lks.



No record of subsequent monumentation found in Union County survey records.
DESCRIPTION OF CORNER EVIDENCE FOUND:

Found fence corner, fences N,S & W. I accept this fence corner as best available evidence, see narrative on Map of Survey 034-1994.

See Map of Survey No. 034-1994

DESCRIPTION OF MONUMENT AND ACCESSORIES I ESTABLISHED TO PERPETUATE THE ORIGINAL LOCATION OF THIS CORNER:

At position as determined, see narrative, I set a 2 1/2" x 30" aluminum pipe with aluminum cap marked as shown, 22 inches in the ground, from which;

NEW BEARING TREES:

- A 20 inch diameter double bole Ponderosa Pine bears S 26° W, 125.00 feet, marked 1/4 X BT
- A 20 inch diameter Ponderosa Pine bears S 84° W, 126.50 feet marked 1/4 S21 BT
- A 5/8" X 30" rebar bears N 10° E, 26.80 feet, marked NE RP on an aluminum cap.
- A 5/8" X 30" rebar bears S 4° E, 16.28 feet, marked SE RP on an aluminum cap.

Raised a small mound of stone around monument.

Painted a 6" red band around all BTs and attached Bearing Tree signs.

Set a steel fence post approximately 3 feet North with a Land Survey Monument sign attached.

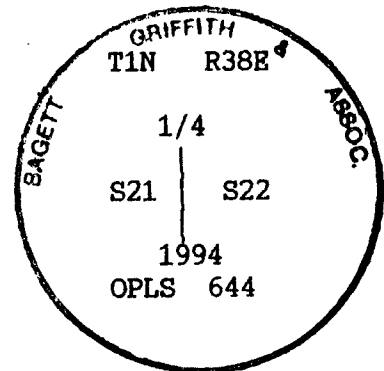
UNION COUNTY SURVEYOR

Date Received 7/26/94

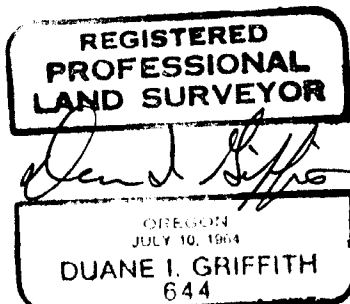
Date Filed 8/23/94

By Gregory T. Black

File No. 032-1994R



I hereby certify that the above corner point was perpetuated as hereon described on July 14, 1994.
Witnesses: Travis Foster and Pete Crabtree.



I used a steel tape and magnetic compass in the establishment of new accessories. I used 20° East magnetic declination and the distances are to a 50d spike driven in the right side of the root crown. I attached a brass washer marked OPLS 644 to the BT blaze.

HORIZONTAL CONTROL DATA

UNION COUNTY, OREGON

OREGON STATE PLANE, NORTH ZONE (3601)

STA NAME: 201535

1/4 SECTION CORNER COMMON TO SECTIONS 21 AND 22

TWP. 1 N. RGE. 38 E.

GEODETIC COORD: NAD 83(91)

DATE TIED: October 20, 2015

LAT: 45 ° 33 ' 3.21656 " N

SURVEYOR: RICK G. ROBINSON
OPLS 2219

LONG: 118 ° 3 ' 21.48606 " W

FIRM: BAGETT, GRIFFITH, & BLACKMAN
2006 ADAMS AVENUE
LAGRANDE, OR 97850
(541) 963-6092

SP. COOR: NAD 83(91)

N: 696412.396 INT FT.

E: 8828095.894 INT FT.

TYPE: GPS

THETA: 1 ° 43 ' 59.7830554 "

ORDER: SECOND CLASS: 1

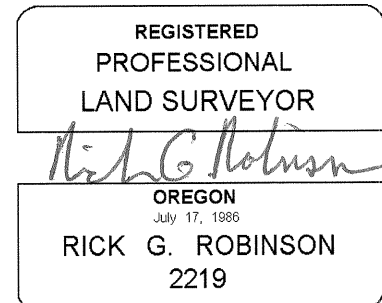
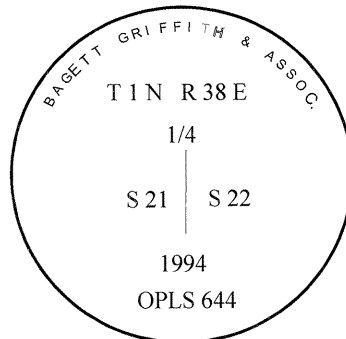
SCALE FACTOR: 0.9999168019

ELEV: 3012.37 US FT.

ELEV: DATUM: NGVD 29

COMMENTS:

2 1/2" aluminum cap monument marked
as shown



Renewal Date: December 31, 2016

1 METER = 3.2808333333... US FEET = 39.37 INCHES

1 METER = 3.280839895 INT'L FEET OR 1 INCH = 2.54 CM

TO CALCULATE ELEVATION FACTOR (IN THE NORTH AMERICAN CONTINENT)

DIVIDE 20,906,000 BY (20,906,000 + ELLIPSOID ELEV. IN FEET)