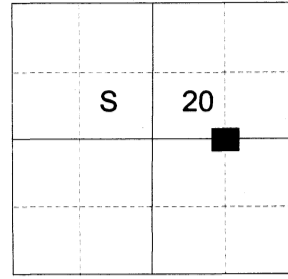


CERTIFIED RECORD OF LAND CORNER MONUMENTATION

HISTORY OF ORIGINAL CORNER ESTABLISHED:

Corner not previously established.

T 1 N R 38 E P-08



DESCRIPTION OF CORNER EVIDENCE FOUND:

None.

SEE SURVEY NUMBER 030-2021

DESCRIPTION OF MONUMENT AND ACCESSORIES I ESTABLISHED TO PERPETUATE THE ORIGINAL LOCATION OF THIS CORNER:

At position determined by survey, I set a 5/8"x30" iron pin, 30 inches in the ground, with 2 1/2" aluminum cap marked as shown below, from which:

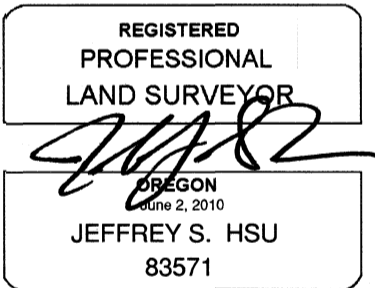
NEW BEARING OBJECTS:

A 17" Douglas Fir bears North 32° East, a distance of 16.65 feet, marked CE 1/16 S20 BT.
A 13" Western Larch bears South 50° East, a distance of 14.40 feet, marked CE 1/16 S20 BT.

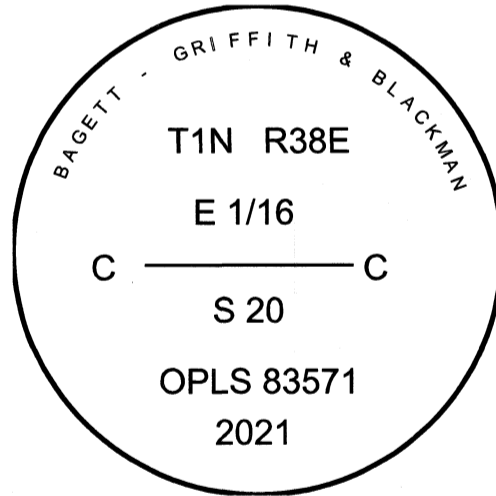
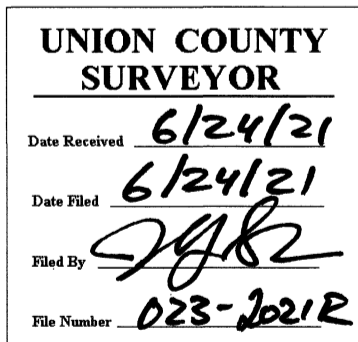
Corner falls approx. 60 ft. South of a East/West running logging road.

Set a fencepost approx. 0.5 ft. North of corner monument.

I hereby certify that the corner was monumented on June 24, 2021.



Renewal Date: June 30, 2023



I used a steel tape and magnetic compass in the establishment of the new accessories. I used 14° East declination, the bearings are to a brass washer marked OPLS 83571 in the BT blaze. Distances are to a 60d spike in the right side of the root crown of the Douglas Fir and to an aluminum nail in the right and side of the Larch.