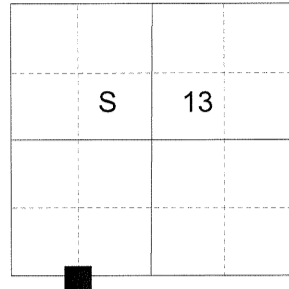


**CERTIFIED RECORD OF LAND CORNER MONUMENTATION**

**HISTORY OF ORIGINAL CORNER ESTABLISHED:**

None.

T 1 N R 38 E N-22



**DESCRIPTION OF CORNER EVIDENCE FOUND:**

None.

SEE SURVEY NUMBER 008-2019

**DESCRIPTION OF MONUMENT AND ACCESSORIES I ESTABLISHED TO MONUMENT THE ORIGINAL LOCATION OF THIS CORNER:**

At the position by survey I set a 5/8"x30" iron pin 28" in the ground with 2 1/2" aluminum cap marked as shown below, from which:

**NEW BEARING TREES:**

A 16" Ponderosa Pine bears South 8° West a dist. of 3.80 ft., marked W 1/16 S24 BT.  
A 8" Ponderosa Pine bears North a dist. of 4.45 ft., marked W 1/16 S13 BT.

Set steel fence post approx. 1' East.

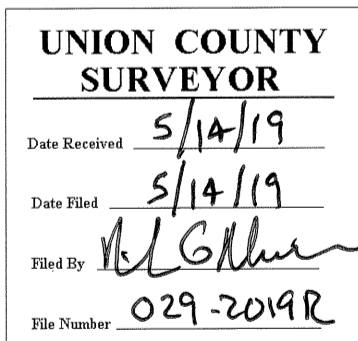
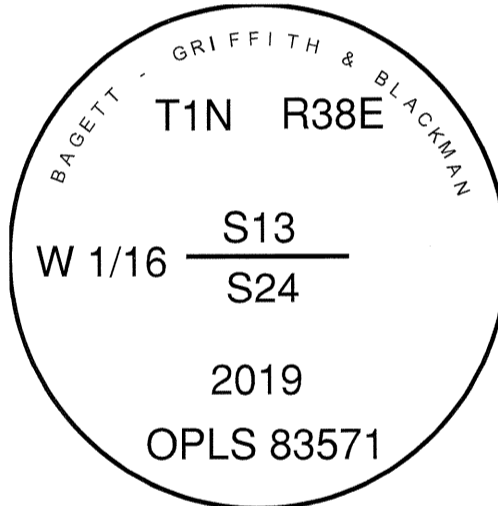
South/East fence corner bears South East of monument approx. 75 ft.

I hereby certify that the corner was monumented on May 3, 2019.

Witness: Kyle A. Tucker.



Renewal Date: June 30, 2019



I used a steel tape and magnetic compass in the establishment of the new accessories. I used 13° East declination, the distances are to a 60d spike driven into the right side of the root crown of the bearing trees. The bearings are to a brass washer marked OPLS 83571 attached to the BT blaze of the new bearing trees.