

# MAJOR PARTITION NUMBER 20060022T

MICROFILM No. 20066392T

SITUATED IN THE SOUTH HALF OF SECTION 10; TOWNSHIP 1 NORTH; RANGE 39 EAST; WILLAMETTE MERIDIAN.  
UNION COUNTY; OREGON

PLAT CABINET No. C854-C855



SCALE 1" = 100'  
BASIS OF BEARING CS 026-1993

## REFERENCES

### DEEDS

DEED MF NO. 20010727  
DEED MF NO. 20010728  
DEED MF NO. 141462  
EASEMENT MF NO. 20056789  
EASEMENT MF NO. 20060032

### SURVEYS

PP 1995-002, PP 1998-19, PP 2003-011  
CS034-1992, CS 87-77, CS 026-1993  
CS 006-1999, CS 039-1993, CS 84-78  
CS 58-81, CS 012-2006, CS 029-2006

### PLATS

HUG'S ADDITION TO THE TOWN OF ELGIN

TITLE ORDER 05-17104

### CURVE DATA

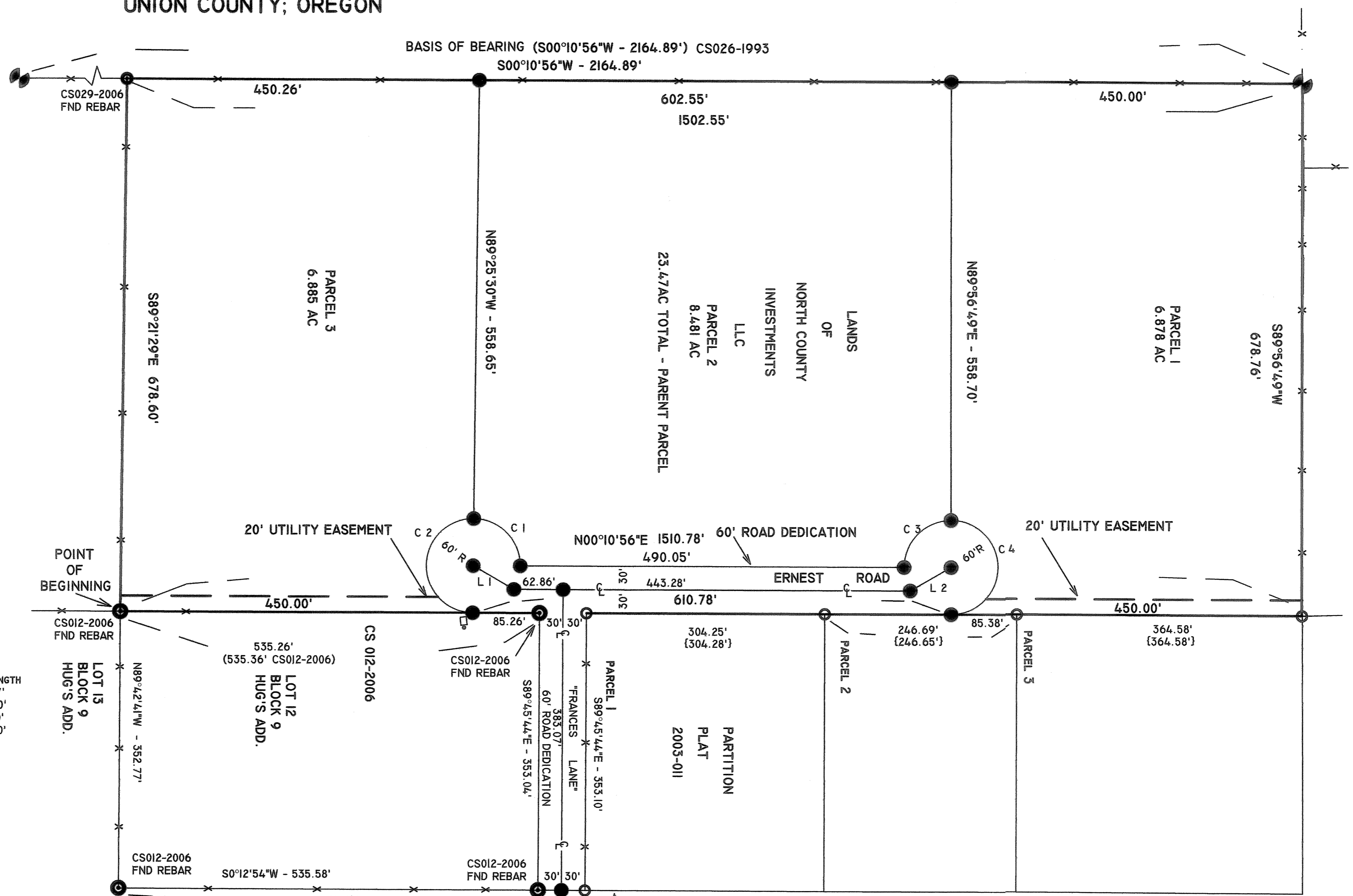
CURVE	RADIUS	DELTA	LC	LC BRG	ARC LENGTH
C 1	60.00'	89°32'37"	84.51'	S45°25'49"E	93.77'
C 2	60.00'	180°00'00"	120.00'	N89°25'30"W	188.50'
C 3	60.00'	89°45'33"	84.51'	S44°55'58"E	94.00'
C 4	60.00'	180°00'00"	120.00'	N89°56'49"E	188.50'

### LINE DATA

LINE	BEARING	DISTANCE
L 1	S30°11'06"W	60.00'
L 2	N29°48'44"W	60.00'

## LEGEND

- SET 5/8" X 30" IRON REBAR WITH PLASTIC CAP MARKED ORPLS 43406
- FOUND 5/8" REBAR WITH PLASTIC CAP MARKED "ELDER LS51277" FROM PP2003-011
- ⊙ FOUND 5/8" REBAR WITH PLASTIC CAP MARKED "ORPLS 43406" AS NOTED
- FOUND 5/8" REBAR WITH PLASTIC CAP MARKED "BGA SURVEY MARKER" FROM CS026-1993
- {XXX} ELDER RECORD PP2003-011
- (XXX) ORPLS 43406 RECORD CS012-2006
- X-X- EXISTING FENCE LINES
- UTILITY EASEMENT



PALMER JUNCTION ROAD (MAIN STREET) CO. RD. 44

## NARRATIVE OF SURVEY

THIS SURVEY WAS ORDERED BY DENNIS CROSS OF NORTH COUNTY INVESTMENTS FOR THE PURPOSE OF PARTITIONING THE LAND INTO THREE PARCELS. THIS PARCEL WAS PREVIOUSLY SURVEYED, EARLIER THIS YEAR, IN PREPARATION OF PARTITIONING. I FOUND ALL OF THE MONUMENTS SET BY SURVEY NUMBER 029-2006 WHICH SET THE EXTERIOR OF THE NORTH COUNTY INVESTMENTS TRACT. I HELD ALL OF THE MONUMENTS SET BY SAID SURVEY. THE SIZES OF PARCEL NO. 1 AND 2 WERE AT THE DIRECTION OF DENNIS CROSS.  
I FIND NO UNUSUAL PROBLEMS WITH THIS PARTITION.

REGISTERED PROFESSIONAL LAND SURVEYOR

*Robert D. English*  
ROBERT DOUGLAS ENGLISH  
43406LS

RENEWAL DATE: 12/31/07

I HEREBY CERTIFY THAT THIS IS A TRUE AND EXACT COPY OF MAJOR PARTITION PLAT 2006-  
I HEREBY CERTIFY THAT THE INK/MEDIA COMBINATION USED MEETS THE CURRENT O.A.C.E.S. REQUIREMENTS.

*Robert D. English*  
ROBERT D. ENGLISH, ORPLS 43406

DATE: 09/10/06	MAJOR PARTITION PLAT FOR:
SCALE: 1" = 200'	NORTH COUNTY INVESTMENTS, LLC 815 HEMLOCK STREET ELGIN, OR 97827
JOB NO. 2006-014	ROBERT D. ENGLISH ORPLS 43406 COLUMBIA BASIN CONSTRUCTION, INC. P.O. BOX 382 PENDLETON, OR 97801
DWG NO. 2006-014PP	541-276-2055 541-969-8067

MAJOR PARTITION No. 20060022T

MICROFILM NUMBER 20066392T  
PLAT CABINET NO. C854-C855

SITUATED IN THE SOUTH 1/2 OF SECTION 10, TOWNSHIP 1 NORTH,  
RANGE 39 EAST OF THE WILLAMETTE MERIDIAN; UNION COUNTY  
OREGON

DECLARATION

KNOW ALL PEOPLE BY THESE PRESENTS THAT DENNIS R. CROSS, MANAGING MEMBER FOR NORTH COUNTY INVESTMENTS, OWNERS OF THE LAND REPRESENTED ON THE ON THE ANNEXED MAP, AND MORE PARTICULARLY DESCRIBED IN THE ACCOMPANYING SURVEYORS CERTIFICATE HAVE CAUSED THE SAME TO BE SURVEYED AND PLATTED AS SHOWN ON THE ANNEXED MAP, IN ACCORDANCE WITH THE PROVISIONS OF O.R.S. CHAPTER 92.

Dennis R. Cross  
DENNIS R. CROSS, MANAGING MEMBER

DEDICATION

KNOW ALL MEN BY THESE PRESENTS THAT THE UNDERSIGNED OWNERS OF SAID TRACT OF LAND SHOWN ON THE ACCOMPANYING PLAT DO HEREBY DEDICATE TO THE USE OF THE PUBLIC, FOREVER, THE ROADWAY AND UTILITY EASEMENTS DESIGNATED ON SAID PLAT.

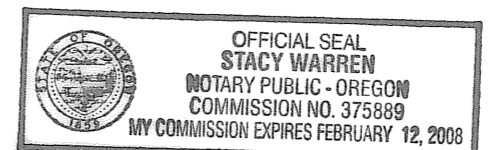
Dennis R. Cross  
DENNIS R. CROSS, MANAGING MEMBER

ACKNOWLEDGEMENTS

STATE OF OREGON  
SS  
COUNTY OF UNION

KNOW ALL MEN BY THESE PRESENTS, ON THIS 6<sup>th</sup> DAY OF Dec., 2006, BEFORE ME A NOTARY PUBLIC IN AND FOR SAID STATE AND COUNTY, PERSONALLY APPEARED DENNIS R. CROSS, MANAGING MEMBER, FOR THE OWNERS OF NORTH COUNTY INVESTMENTS, LLC., KNOWN TO ME TO BE THE IDENTICAL PERSON NAMED IN THE FORGOING INSTRUMENT, AND WHO BEING DULY SWORN DID SAY THAT THEY EXECUTED THE SAME FREELY AND VOLUNTARILY.

Stacy Warren  
NOTARY PUBLIC FOR  
THE STATE OF OREGON



NOTARIAL SEAL

SURVEYOR'S CERTIFICATE

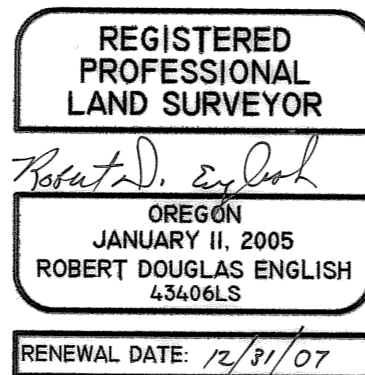
I, ROBERT D. ENGLISH, REGISTERED PROFESSIONAL LAND SURVEYOR, HEREBY CERTIFY THAT I HAVE SURVEYED AND PLATTED THE ANNEXED PARTITION, SITUATED IN THE SOUTH 1/2 OF SECTION 10, TOWNSHIP 1 NORTH, RANGE 39 EAST OF THE WILLAMETTE MERIDIAN, THE EXTERIOR IF WHICH BEING MORE PARTICULARLY DESCRIBED AS FOLLOWS:

BEGINNING AT THE NORTHWEST CORNER OF LOT THIRTEEN (13) OF BLOCK NINE (9) OF HUG'S ADDITION TO THE TOWN OF ELGIN, UNION COUNTY, OREGON; THENCE N0°10'56"E ALONG THE WEST LINE OF SAID HUG'S ADDITION A DISTANCE OF 1510.78 FEET, TO A POINT OF INTERSECTION WITH AN ANCIENT FENCE, AND THE NORTHWEST CORNER OF PARCEL 3 OF PARTITION PLAT NUMBER 2003-0011, AS RECORDED IN UNION COUNTY RECORDS; THENCE SOUTH 89°56'49" WEST, A DISTANCE OF 678.76 FEET ALONG SAID ANCIENT FENCE, AND BOUNDARY LINE AGREEMENT, AS RECORDED IN MICROFILM NUMBER 20060033, UNION COUNTY RECORDS, TO THE NORTHEAST CORNER OF UNION COUNTY SURVEY NUMBER 026-1993; THENCE SOUTH 0°10'56" WEST, A DISTANCE OF 1502.55 FEET, ALONG THE EAST LINE OF SAID UNION COUNTY SURVEY 026-1993 TO A POINT OF INTERSECTION WITH AN ANCIENT FENCE BEING WEST OF THE POINT OF BEGINNING; THENCE SOUTH 89°21'29" EAST, A DISTANCE OF 678.60 FEET, ALONG SAID ANCIENT FENCE TO THE POINT OF BEGINNING.

PARCEL CONTAINING 23.474 ACRES (1022522 SQUARE FEET)

I FURTHER CERTIFY AND SAY THAT I MADE THE SURVEY AND PLAT BY ORDER OF AND UNDER THE DIRECTION OF THE OWNERS THEREOF, AND THAT ALL PARCEL CORNERS AND BOUNDARY CORNERS ARE MARKED WITH MONUMENTS AS INDICATED ON THE ANNEXED MAP IN ACCORDANCE WITH THE PROVISIONS OF O.R.S. 92-050 AND 92-060.

Robert D. English  
ROBERT D. ENGLISH ORPLS 43406  
COLUMBIA BASIN CONSTRUCTION, INC.  
P.O. Box 382  
PENDLETON, OREGON



FILING STATEMENT

UNION COUNTY CLERK

STATE OF OREGON  
SS  
COUNTY OF UNION

I DO HEREBY CERTIFY THAT THE ATTACHED PARTITION PLAT WAS RECEIVED FOR RECORD ON THE 6<sup>th</sup> DAY OF December, 2006, AT 10:17 O'CLOCK A. M., AND RECORDED IN PLAT CABINET No. C854-C855 UNION COUNTY RECORDS. MICROFILM NUMBER 20066392T

UNION COUNTY CLERK  
BY R. Church, deputy

APPROVALS

Tax Collector  
UNION COUNTY ASSESSOR / ~~TREASURER~~

I HEREBY CERTIFY THAT PURSUANT TO O.R.S. 92.050, ALL AD VOREM TAXES AND ALL SPECIAL ASSESSMENTS, FEES, AND OTHER CHARGES REQUIRED BY THE LAW TO BE PLACED ON THE 2006-2007 TAX ROLL WHICH BECAME A LIEN ON THIS PARTITION OR WILL BECOME A LIEN DURING THE CALENDAR YEAR BUT NOT YET CERTIFIED TO THE TAX COLLECTOR FOR COLLECTION HAVE BEEN PAID.

11/13/06  
DATE  
Linda Hill  
LINDA HILL  
UNION COUNTY ASSESSOR / ~~TREASURER~~ Tax Collector

UNION COUNTY COMMISSIONERS

APPROVED THIS 6<sup>th</sup> DAY OF December, 2006.

John E. Lamoreau  
JOHN E. LAMOREAU, COMMISSIONER

COLLEEN MACLEOD, COMMISSIONER

Steve McClure  
STEVE MCCLURE, COMMISSIONER

UNION COUNTY PLANNING DEPARTMENT

APPROVED THIS 20<sup>th</sup> DAY OF November, 2006.

BY UNION COUNTY PLANNING Hanley Jenkins  
HANLEY JENKINS

UNION COUNTY SURVEYOR

APPROVED THIS 9<sup>th</sup> DAY OF November, 2006.

BY UNION COUNTY SURVEYOR Gregory T. Blackman  
FOR GREGORY T. BLACKMAN