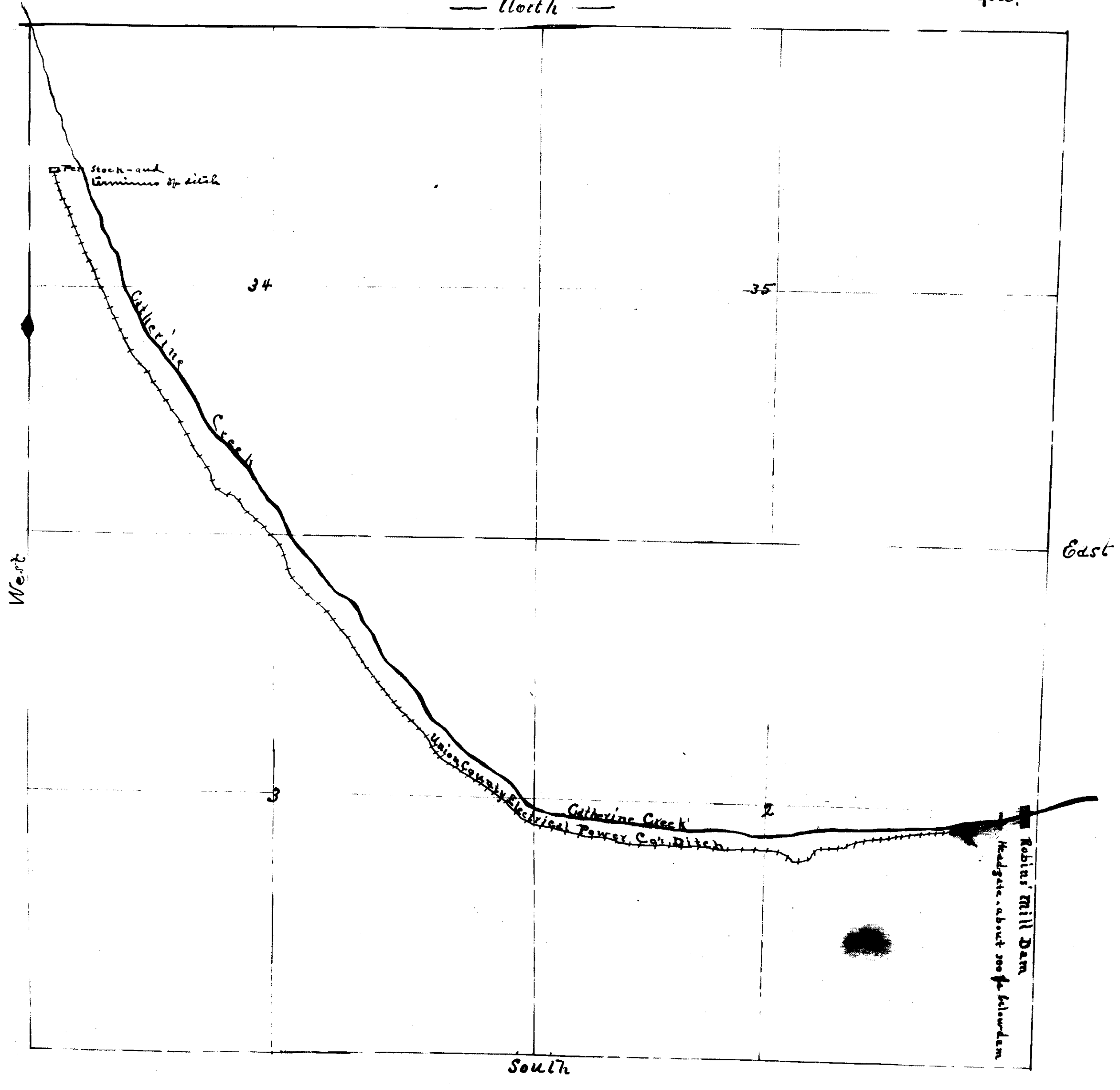


Map  
 Showing the general route of the  
 Union County Electrical Power Co's  
 Ditch - situated in Union Co. Oregon.  
 — North —



The above described ditch is taken out at a point on the south bank of Catherine Creek about 300 ft below Robins' Mill Dam on Section two (2) in Twp Five (5) South Range Dwy (40) S. W. M. - in Union County Oregon - and to run in a general Northwesterly direction, and terminate on Section thirty four (34) - Twp Five (5) South of Range Dwy (40) S. W. M. - An accurate survey of said ditch to be hereafter made showing legal subdivisions.  
 Dated this 10<sup>th</sup> day of December A.D. 1901.

Page 26

Addey Lomat,  
 Maggie Hutchinson,

Appropriation

1901 11 14  
 Filed for Record

