

BE IT REMEMBERED, that at a regular term of the Union County Board of Commissioners, for the County of Union, sitting for the transaction of County business, begun and held at the Joseph Building Annex in the City of La Grande, in said County and State, on Wednesday of said month and the time fixed by law for holding a regular term of said Court, when were present:

The Honorable STEVE MCCLURE Chairman
 COLLEEN MACLEOD Commissioner
 JOHN LAMOREAU Commissioner

WHEN, on Wednesday, the 7th day of June, 2006, among others the following proceedings were had to-wit:

IN THE MATTER OF) COURT ORDER
LEGALIZING OWSLEY) 2006-15
CANYON ROAD)

WHEREAS, on January 5, 2005 the Board of Commissioners voted to initiate legalization proceedings for Owsley Canyon Road because a petition to vacate a portion of Owsley Canyon Road had been received and it was found that the existing road surface had not been included in a road petition or dedication of right-of-way;

WHEREAS, Union County contracted with Greg Blackman, Union County Surveyor, to conduct a survey of Owsley Canyon Road which has been completed and is ready to record when approved;

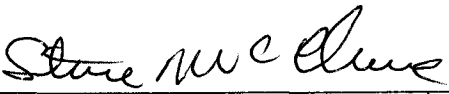
WHEREAS, the Board of Commissioners followed ORS 368.201 - 368.221 and advertised and held a public hearing on May 17, 2006 to accept testimony and deliberate.

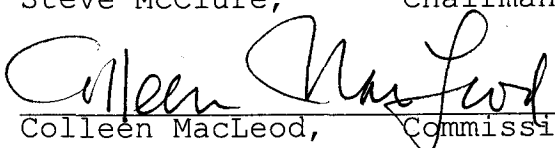
NOW THEREFORE, BE IT ORDAINED BY THE UNION COUNTY BOARD OF COMMISSIONERS, STATE OF OREGON:

SECTION I: Road Legalization

Owsley Canyon Road as identified on the attached survey is now approved and affixed hereto as the Owsley Canyon Road legal description.

PASSED AND ADOPTED this 7th day of June, 2006 by a vote of the following members of the Board of Commissioners voting therefore.



Steve McClure, Chairman


Colleen MacLeod, Commissioner

John Lamoreau, Commissioner

SHEET 1 OF 4
STATION 0+00 TO STATION 45+00



BASIS OF BEARING

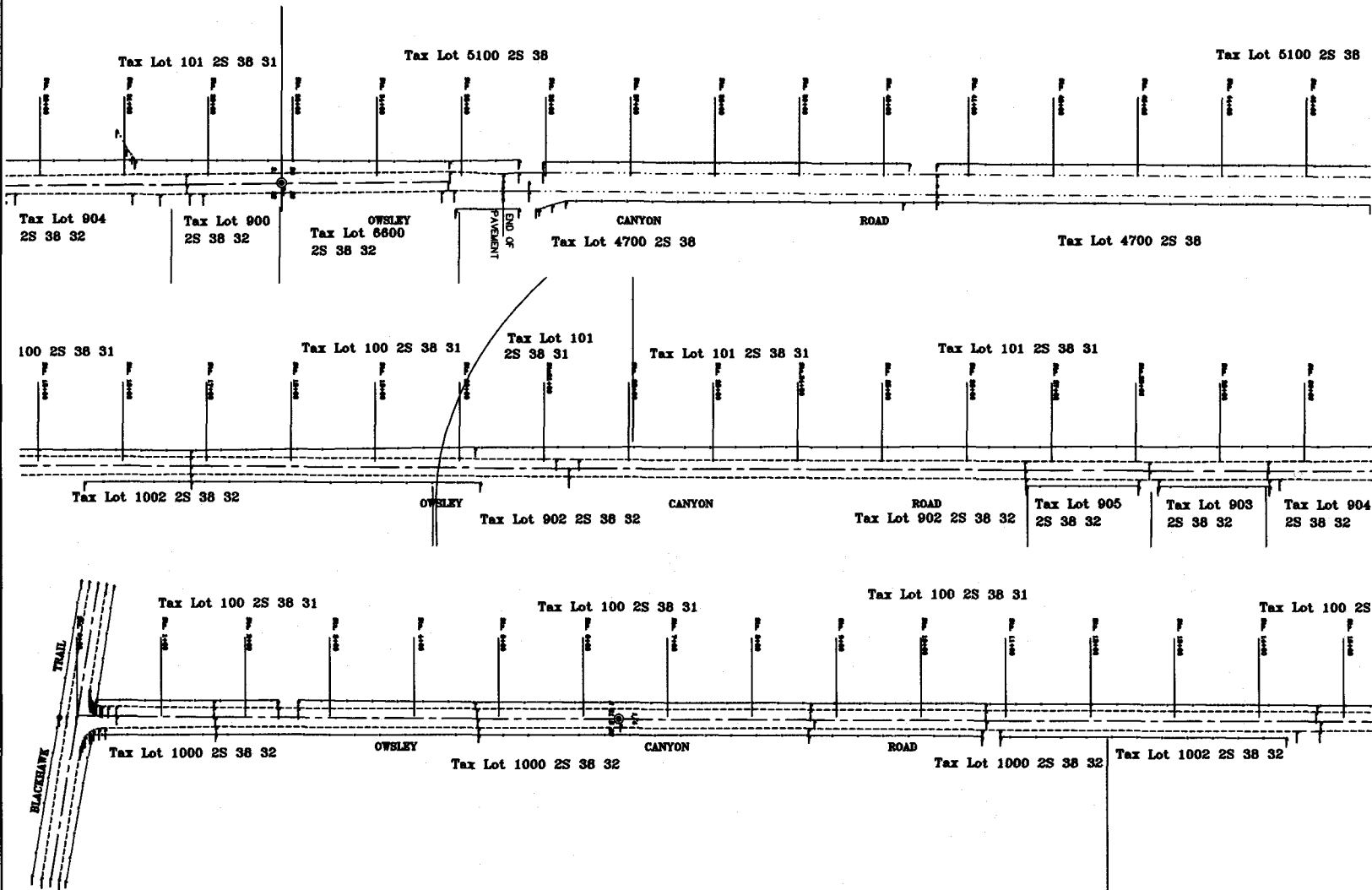
Forward bearing as published by the U.S.C. and G.S. from A COLLEGE to A VALLEY Dated 1945.

SCALE: 1"=60'

LEGEND

- Found Section Corner or 1/4 Corner as per Union County Monumentation Records
- Edge of Gravel traveled Way
- Edge of Oil Not traveled Way
- Centerline of Dedicated Roadway
- Proposed realigned centerline, located approximately on the centerline of the existing traveled way
- Entering fence line

NOTE: The entire length of OWSELY CANYON ROAD, was petitioned and accepted as a 48 foot wide right of way. See Road petition dated September 5, 1931 by G. M. Tull, known as Road Number 644. Also see Road Petition dated January 28th 1938, and petitioned by John Crull. Both Petitions follow the section lines as the intended centerline of the proposed roads.



SHEET 1 OF 4

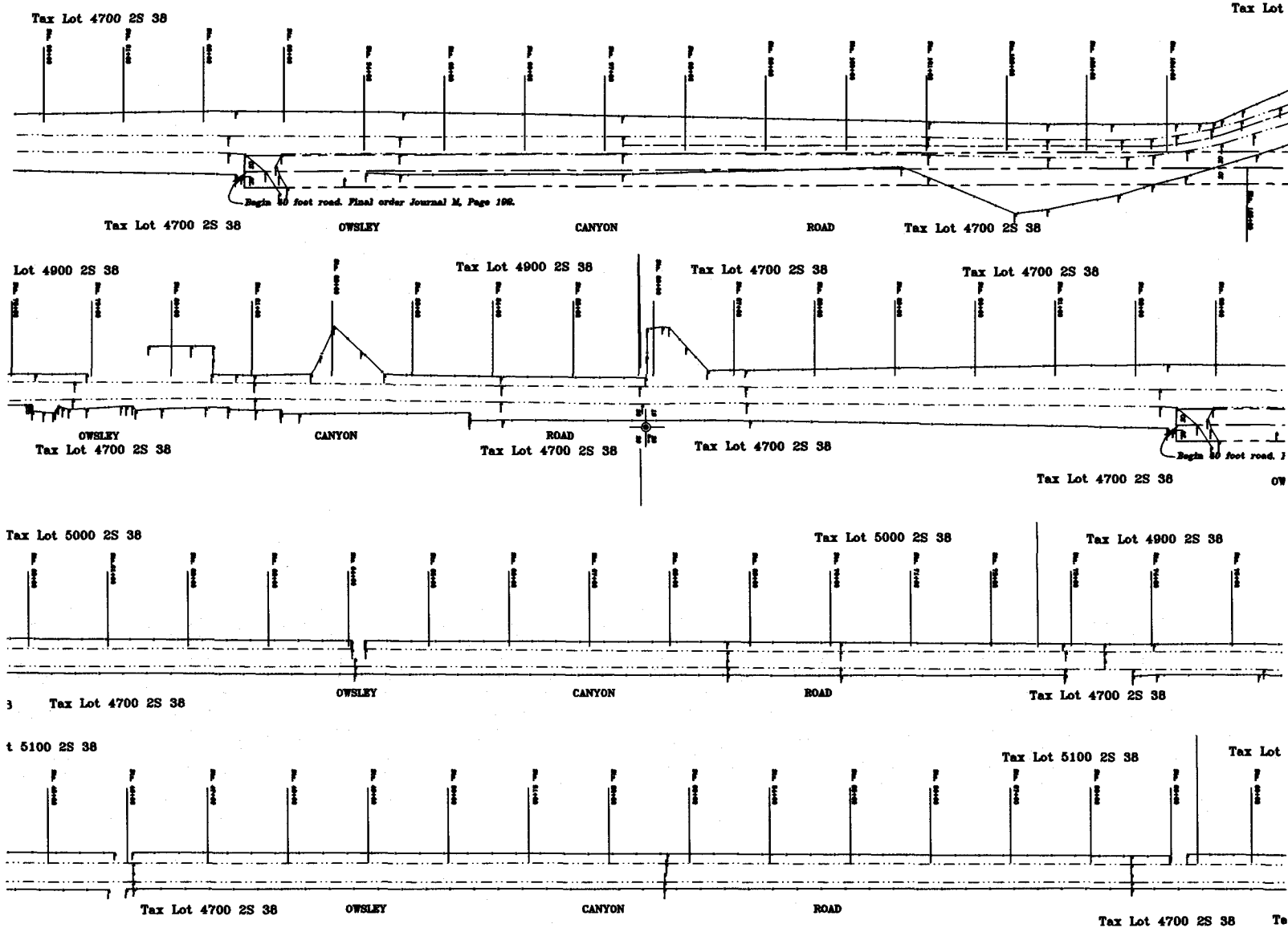
RAGETT, GRIFFITH & BLACKMAN
2026 Adams Avenue, Louisville, Oregon
Map of Survey
OWSELY CANYON ROAD LEGALIZATION AND
EXISTING LOCATION STRAITS IN SECTIONS 32, 33,
28, 29, 18, 20, 17, and 15, TWP 2 SOUTH
RANGE 38 EAST, 7th
UNION COUNTY, OREGON

REGISTERED
PROFESSIONAL
LAND SURVEYOR
G. T. Blackman
GREGORY T. BLACKMAN
691
Resided here Dec. 21, 1907

SURVEYED FOR	UNION COUNTY COMMISSIONERS
SURVEYED BY	GTB 7/25-1/26
Scale: 1" = 60 ft.	Drawn by: GTB 1/26

SHEET 2 OF 4

STATION 45+00 TO STATION 105+00



BASIS OF BEARING
 Forward bearing as published by the U.S.C. and G.S. from A COLLEGE to A VALLEY Dated 1946.
SCALE: 1"=60'

LEGEND

- ⊙ Found Section Corner or 1/4 Corner as per Union County Monumentation Records
- Edge of Gravel traveled Way
- - - - Edge of Oil Not traveled Way
- +—+—+ Centerline of Dedicated Roadway
- · - · - · Proposed realigned centerline, located approximately on the centerline of the existing traveled way
- +—+—+ Existing fence line

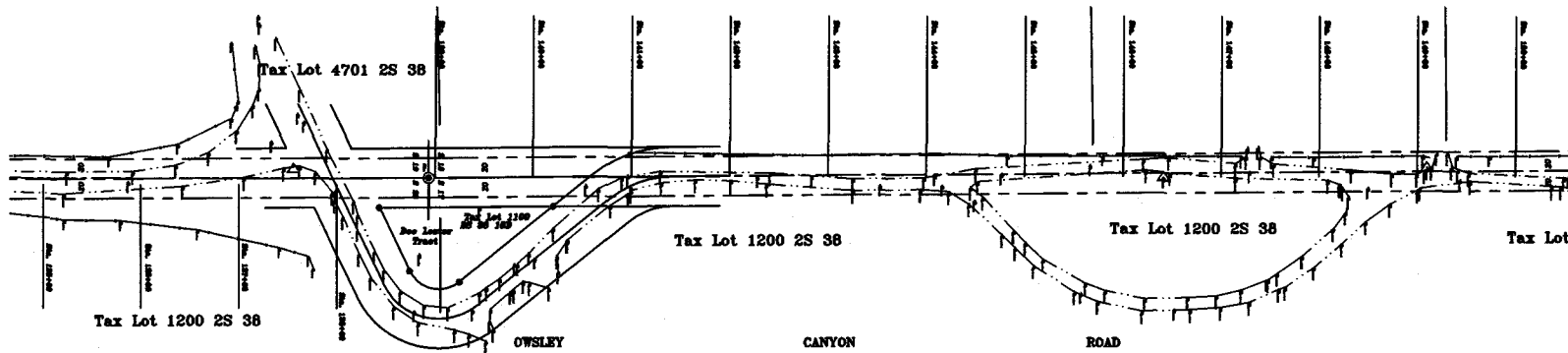
SHEET 2 OF 4

BAGETT, GRIFFITH & BLACKMAN
 2028 Adams Avenue, LaGrande, Oregon
 Map of Survey
 OWSLEY CANYON ROAD LEGALIZATION AND
 EXISTING LOCATION SURVAY IN SECTIONS 32, 33,
 26, 29, 18, 20, 17, and 16, TWP 2 SOUTH
 RANGE 30 EAST, 11th
 UNION COUNTY, OREGON

REGISTERED
 PROFESSIONAL
 LAND SURVEYOR
 GREGORY T. BLACKMAN
 001
 Revised Note Dec. 21, 2007

SURVEYED FOR	UNION COUNTY COMMISSIONERS	
SURVEYED BY	GTB	7/05-1/08
Scale: 1" = 60 ft.	Drawn by: GTB	1/08

SHEET 3 OF 4
STATION 105+00 TO STATION 150+00



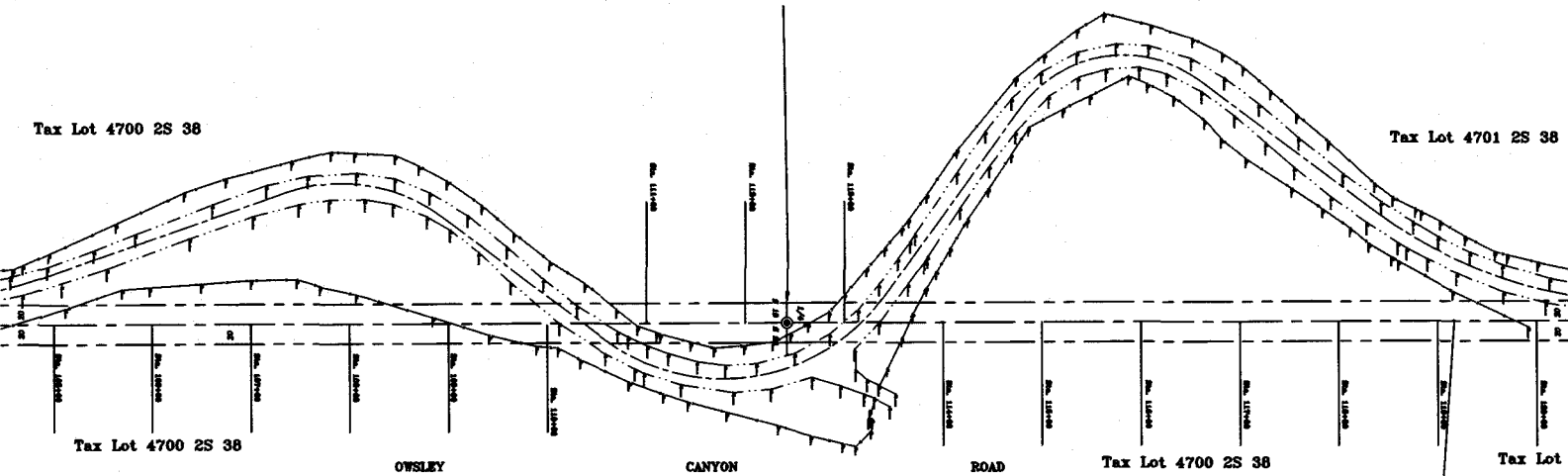
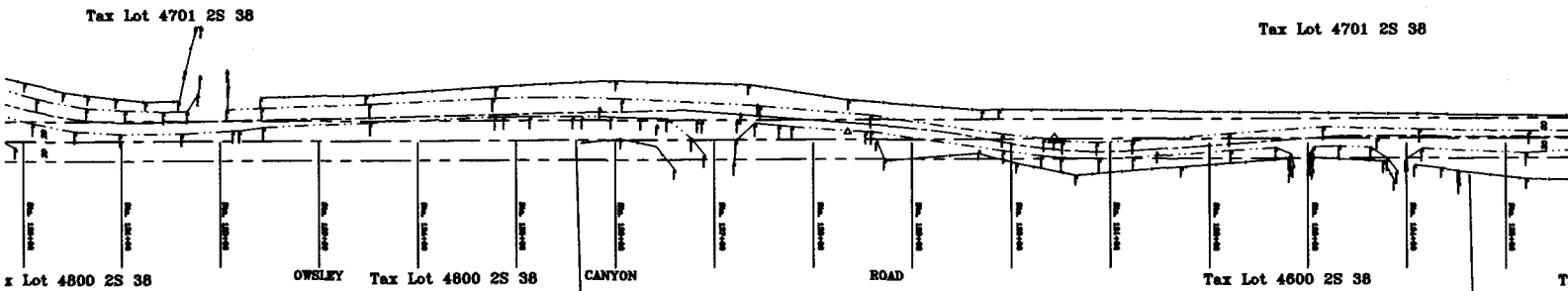
BASIS OF BEARING

Forward bearing as published by the U.S.C. and G.S. from COLLEGE to VALLEY Dated 1948.

SCALE: 1"=60'

LEGEND

- ⊙ Found Section Corner or 1/4 Corner as per Union County Monumentation Records
- Edge of Gravel traveled Way
- - - Edge of Oil Mat traveled Way
- Centerline of Dedicated Roadway
- - - Proposed realigned centerline, located approximately on the centerline of the existing traveled way
- Existing fence line



SHEET 3 OF 4

RAGETT, GRIFFITH & BLACKMAN
2008 Adams Avenue, Lebanon, Oregon

REGISTERED
PROFESSIONAL
LAND SURVEYOR
Gregory T. Blackman
No. 0000
GREGORY T. BLACKMAN
801

Map of Survey
OWSLEY CANYON ROAD LEGALIZATION AND
EXISTING LOCATION SURVEY IN SECTIONS 32, 33,
28, 29, 18, 20, 17, and 16, T1P 2 SOUTH
RANGE 38 EAST, 8th

LINCOLN COUNTY, OREGON
SURVEYED FOR LINCOLN COUNTY COMMISSIONERS

SURVEYED BY GTB 7/20-1/08

Scale: 1" = 60 ft. Drawn by: GTB 1/08

Revised Plate No. 39, 2007

SHEET 4 OF 4
STATION 150+00 TO STATION 185+00



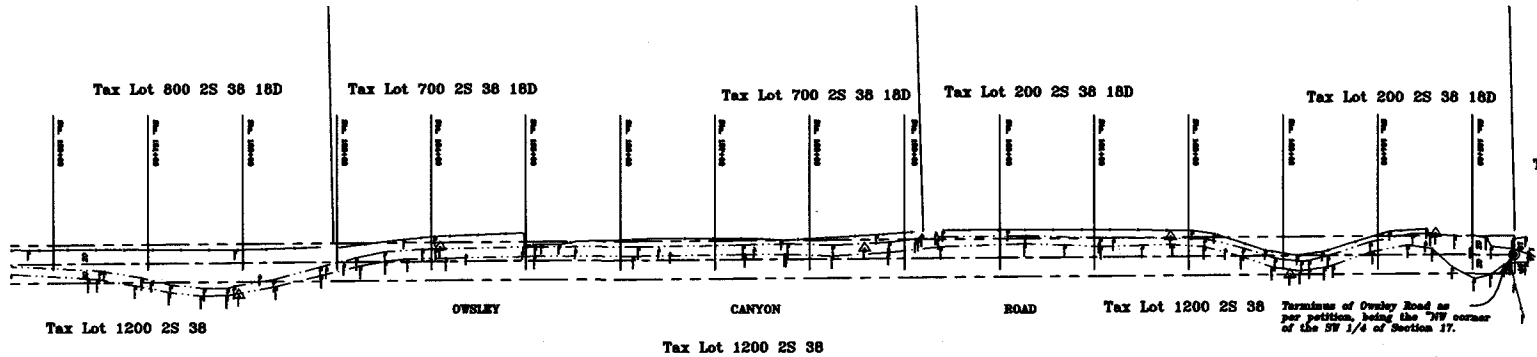
BASIS OF BEARING

Forward bearing as published by the U.S.C.
 and G.S. from A COLLEGE to A VALLEY
 Dated 1946.

SCALE: 1"=60'

LEGEND

- Found Section Corner or 1/4 Corner as per Union County Monumentation Records
- Edge of Gravel traveled Way
- - - - Edge of Old traveled Way
- Centerline of Dedicated Roadway
- - - - Proposed realigned centerline, located approximately on the centerline of the existing traveled way
- Existing fence line



SHEET 4 OF 4

REGISTERED
 PROFESSIONAL
 LAND SURVEYOR
[Signature]
 GEORGE T. BLACKMAN
 201
 Revised State Pub. No. 24, 1957

W. BAGGETT, GRIFFITH & BLACKMAN	
2028 James Avenue, Lenoir, North Carolina	
SURVEYED FOR: UNION COUNTY COMMISSIONERS	
SURVEYED BY: GTB	7/25-1/28
Scale: 1" = 60 ft. Drawn by: GTB 1/28	