

1973-037

IN THE COUNTY COURT OF THE STATE OF OREGON FOR THE COUNTY OF UNION

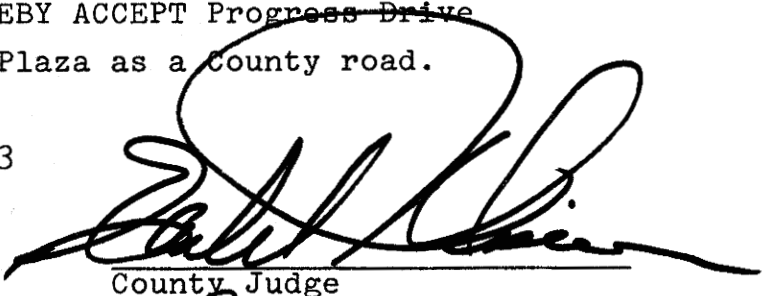
IN THE MATTER OF)
ACCEPTING PROGRESS) COURT ORDER
PLAZA AS A COUNTY ROAD)

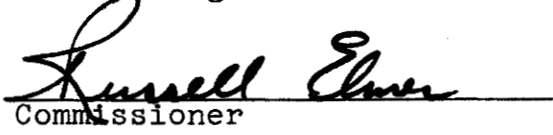
NOW, the County Court setting for official business April 5, 1973, reviewed the street situation within Progress Plaza Subdivision filed May 5, 1960, County Clerk Recording No. 58423, and

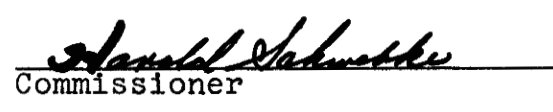
WHEREAS, Progress Drive located within the above referenced subdivision has not been accepted as a County Road, and,

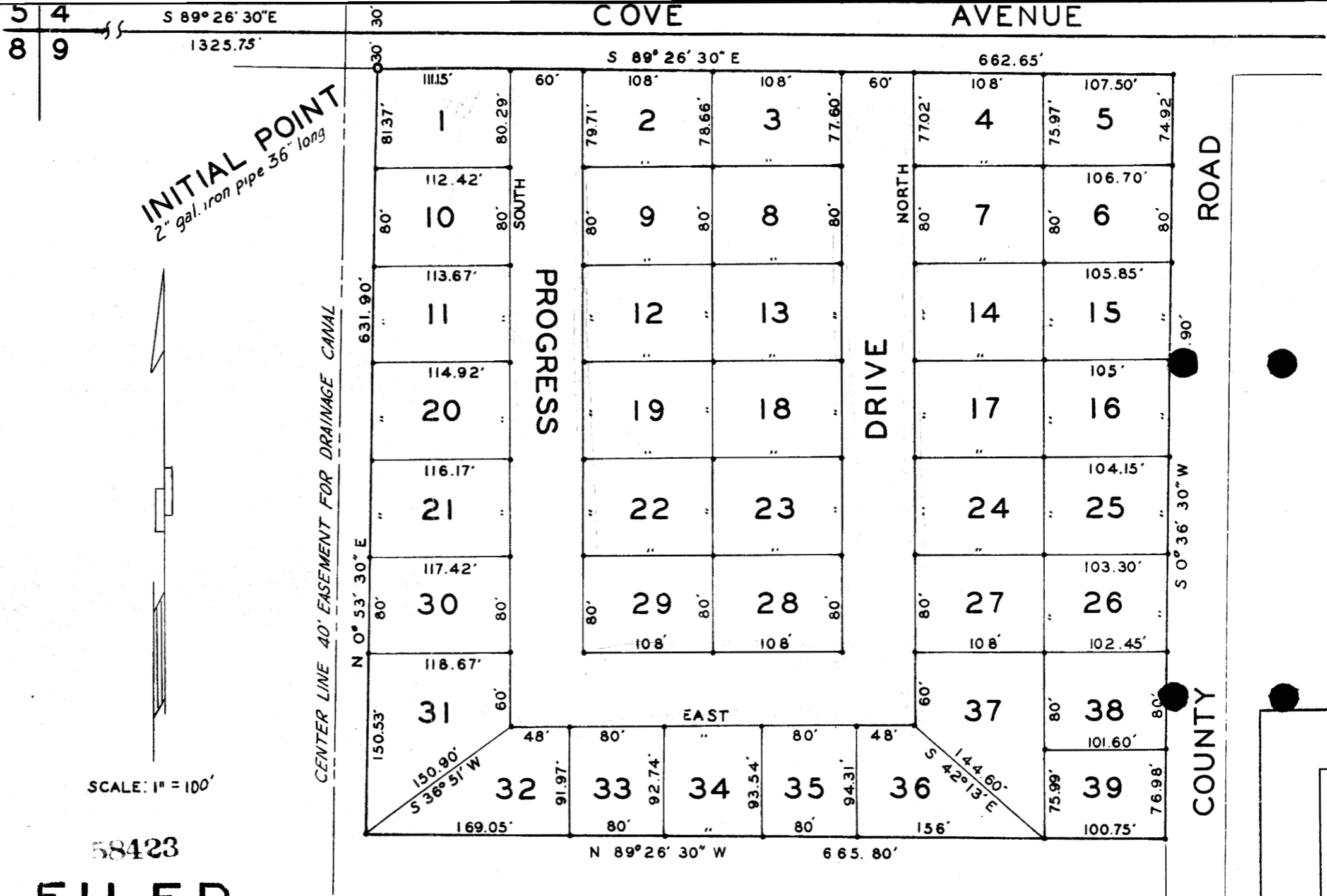
WHEREAS, it is in the best interest of all concerned that Progress Drive as located on the attached map marked Exhibit A become a County road. The Union County Court does HEREBY ACCEPT Progress Drive situated in Progress Plaza as a County road.

Dated the 5 day of May, 1973
NUNC PRO TUNC
April 5, 1973


County Judge


Commissioner


Commissioner



5 4
8 9

S 89° 26' 30" E
1325.75'

COVE AVENUE

S 89° 26' 30" E 662.65'

CENTER LINE 40' EASEMENT FOR DRAINAGE CANAL

SOUTH

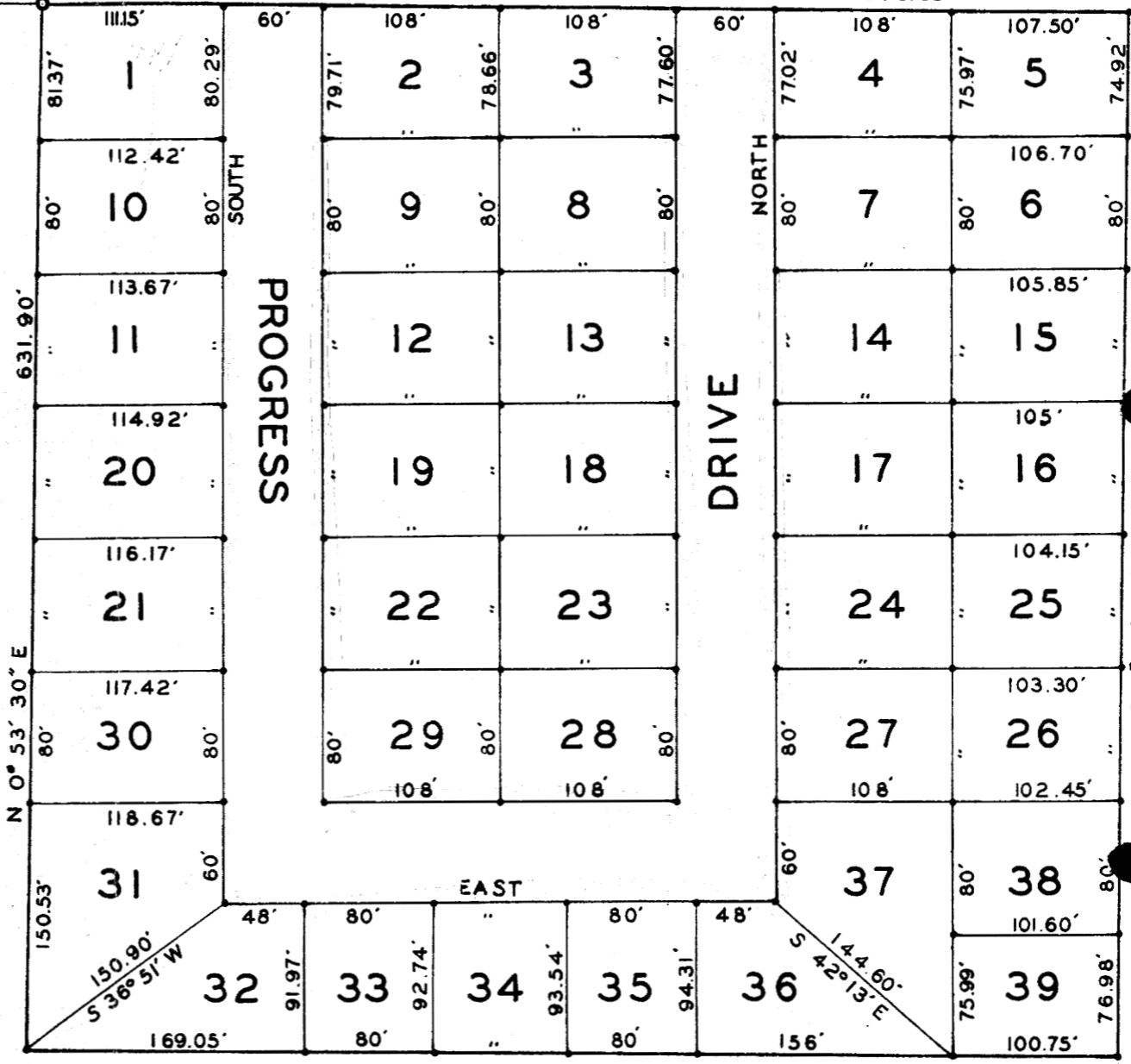
PROGRESS

DRIVE

NORTH

ROAD

COUNTY



N 0° 53' 30" E

S 0° 36' 30" W