

Figure 114. Baker fire maps for 1762 (top) and 1767 (bottom).

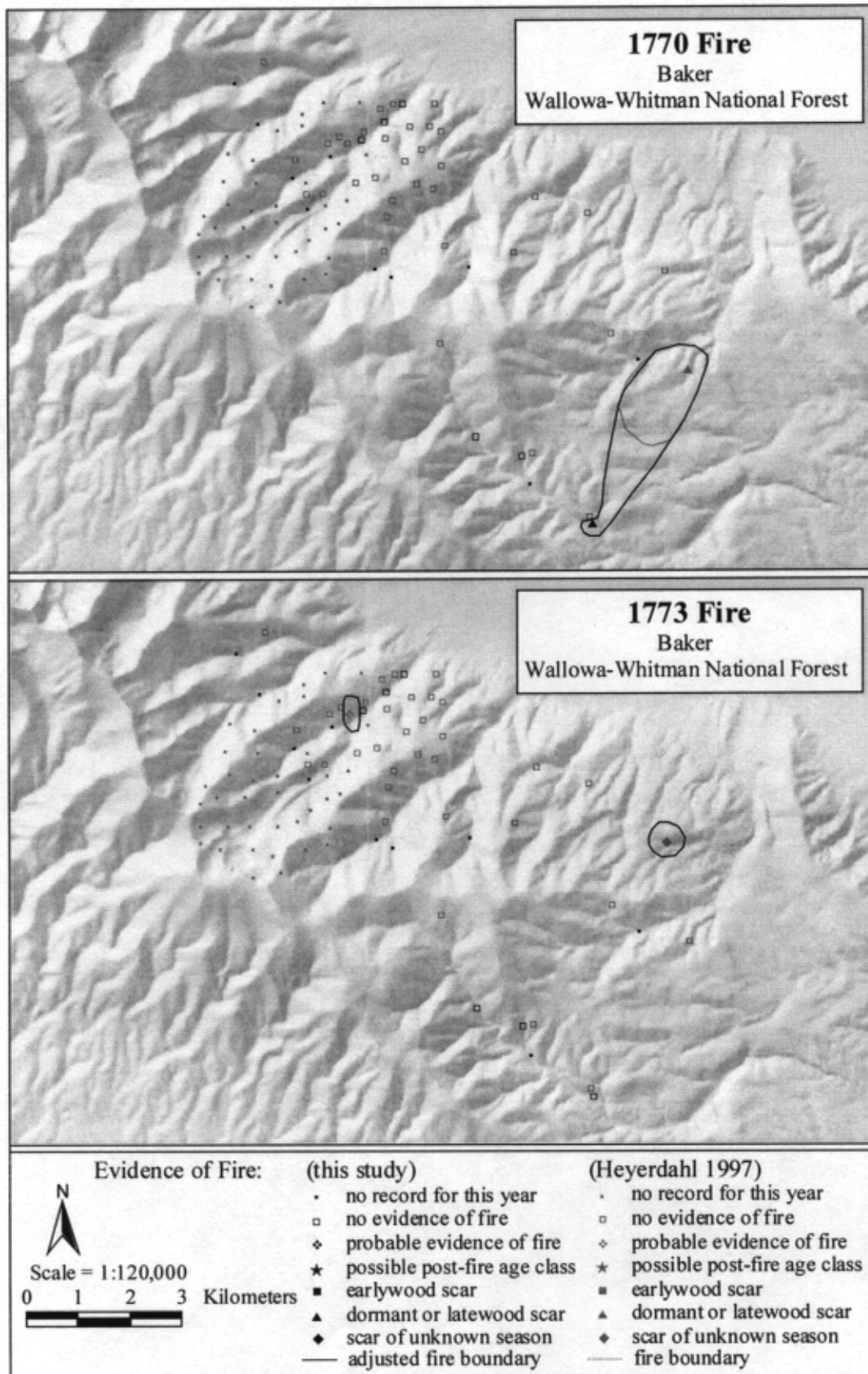


Figure 115. Baker fire maps for 1770 (top) and 1773 (bottom).

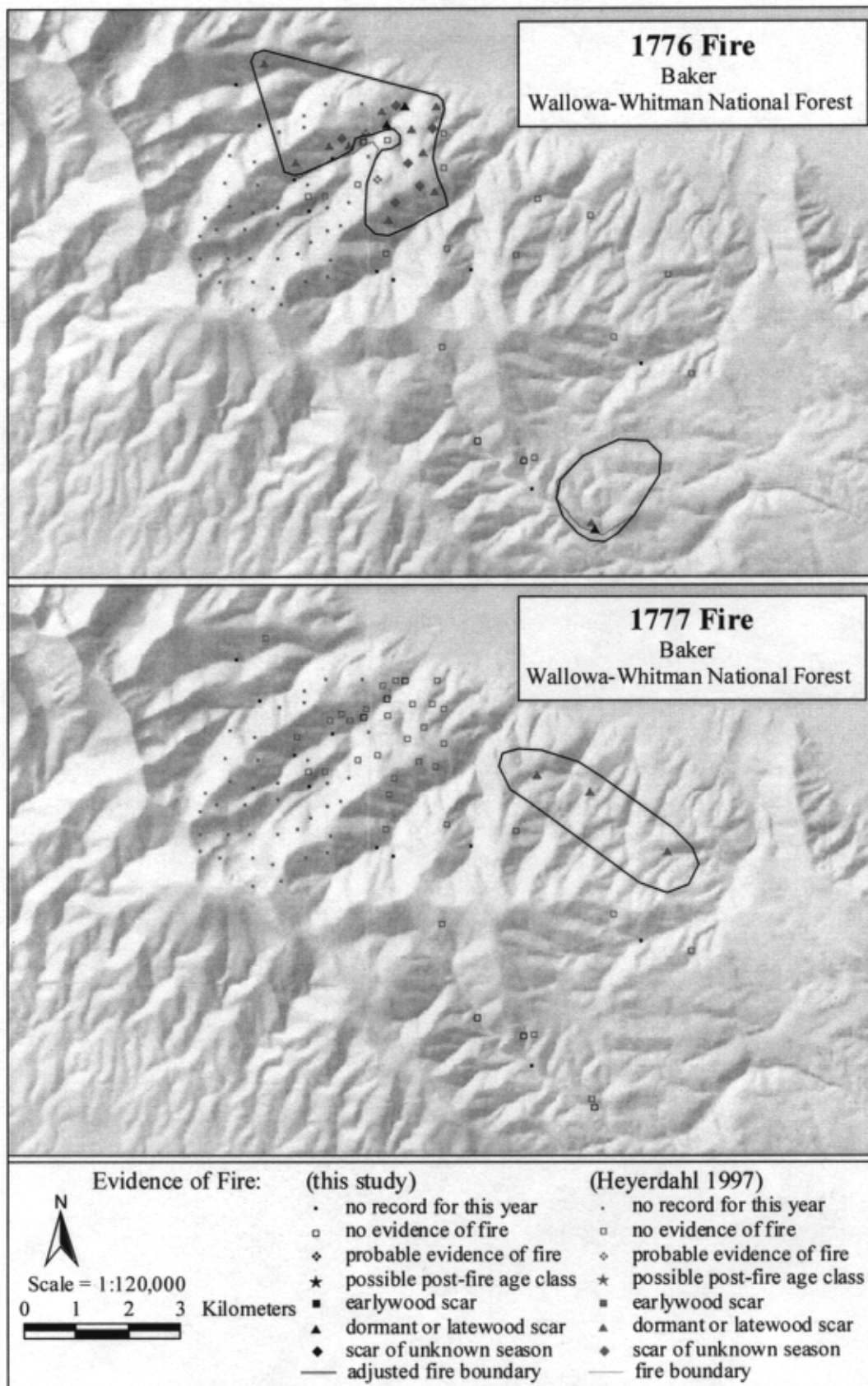


Figure 116. Baker fire maps for 1776 (top) and 1777 (bottom).



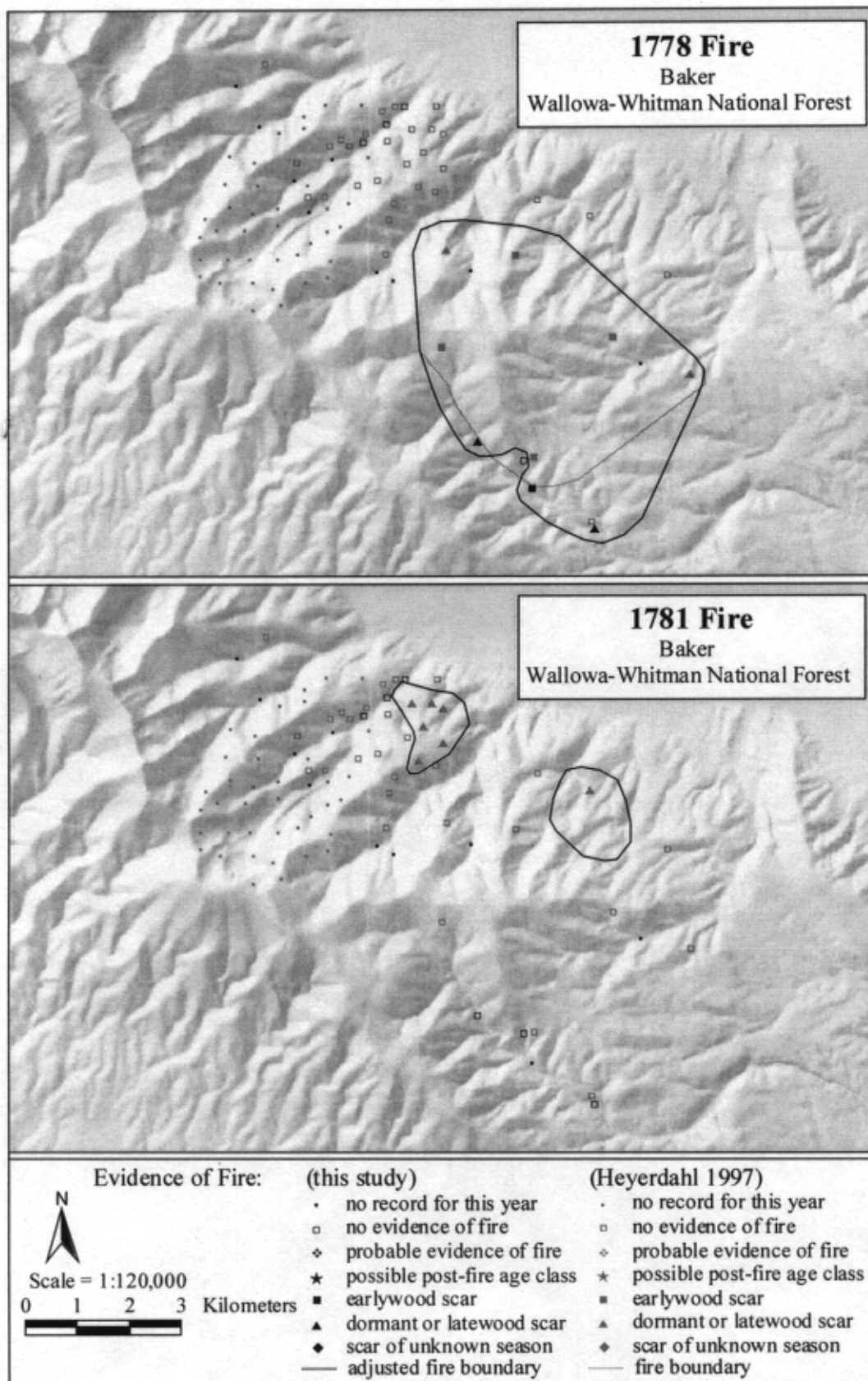


Figure 117. Baker fire maps for 1778 (top) and 1781 (bottom).

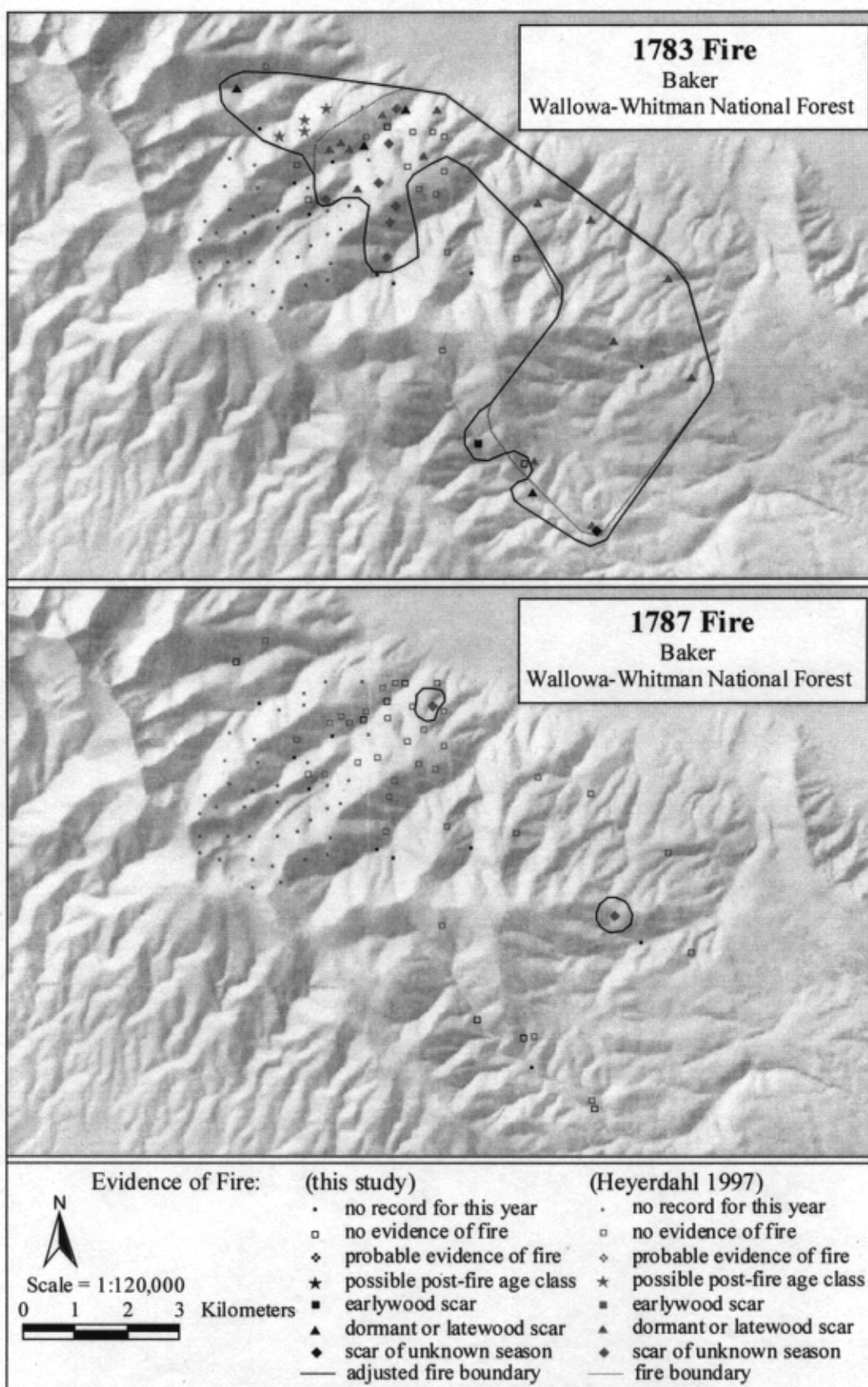


Figure 118. Baker fire maps for 1783 (top) and 1787 (bottom).

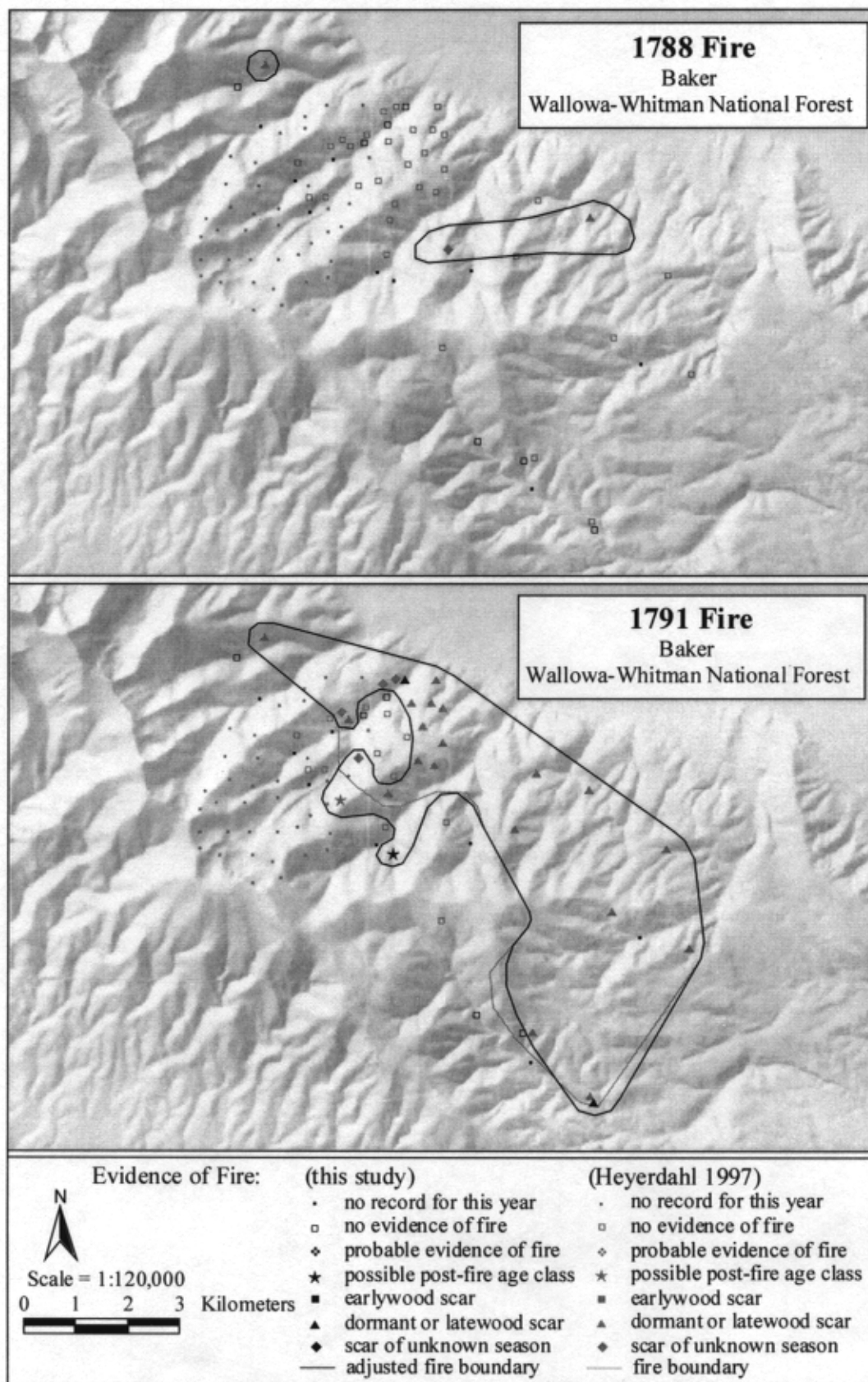


Figure 119. Baker fire maps for 1788 (top) and 1791 (bottom).



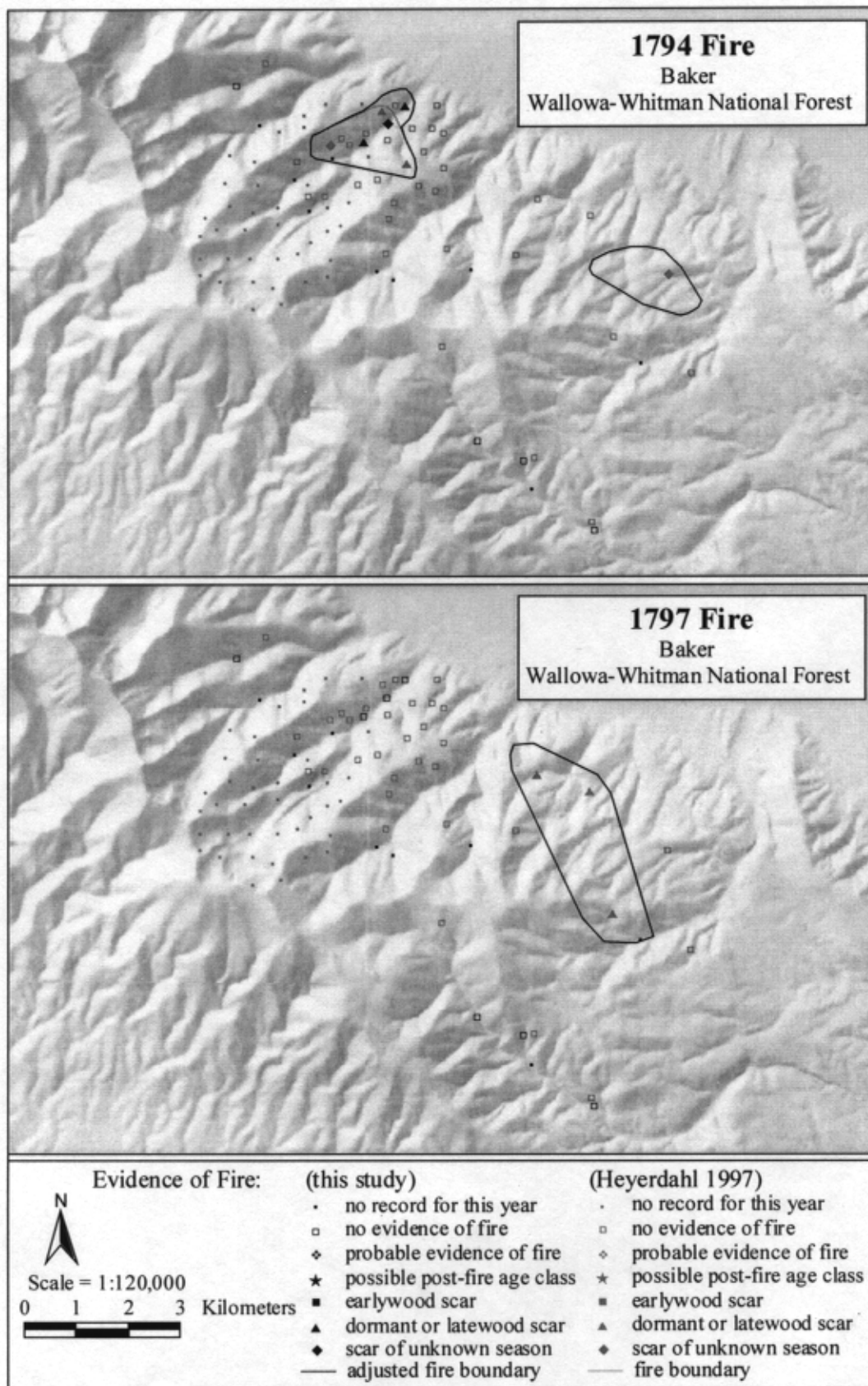


Figure 120. Baker fire maps for 1794 (top) and 1797 (bottom).

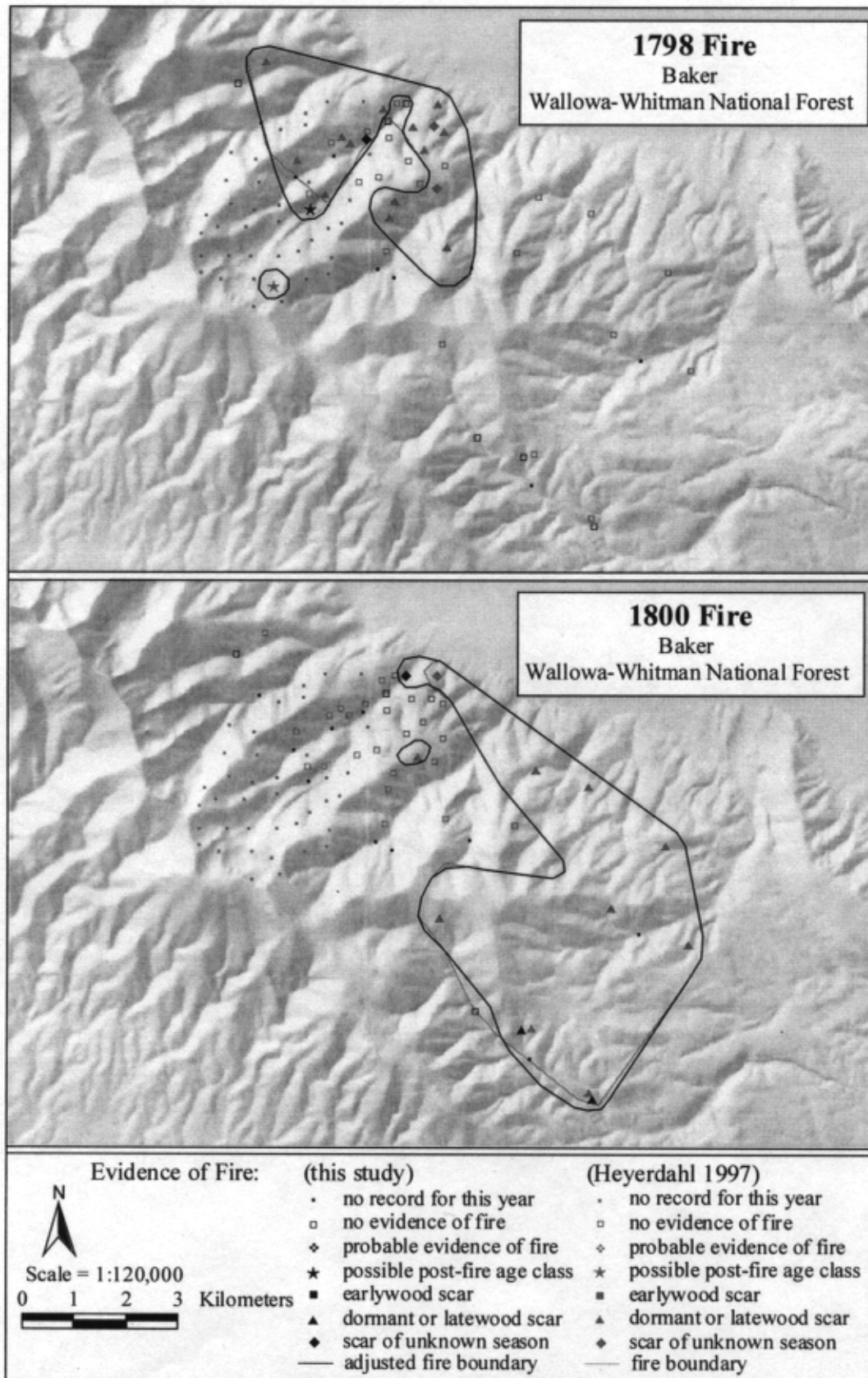


Figure 121. Baker fire maps for 1798 (top) and 1800 (bottom).



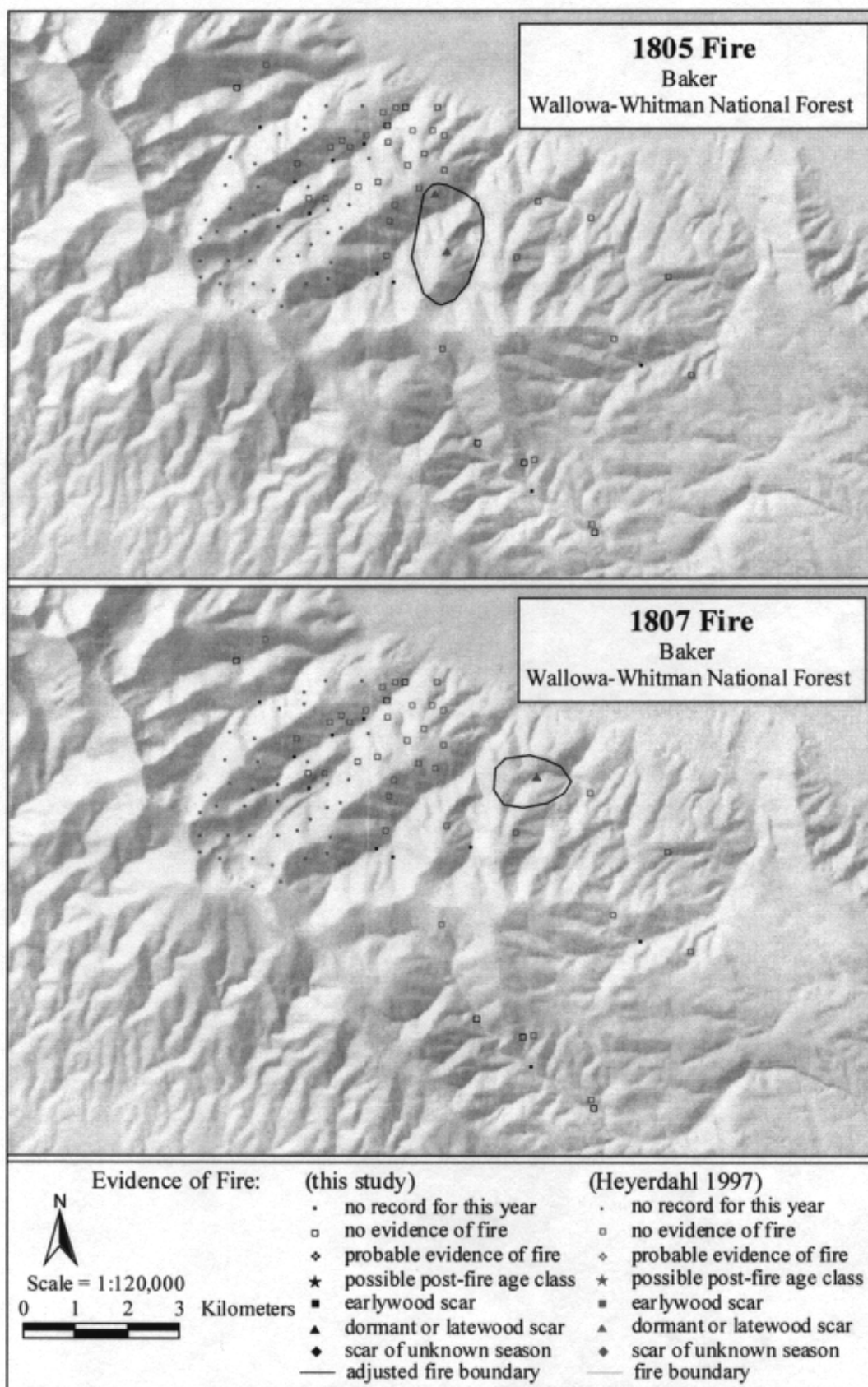


Figure 122. Baker fire maps for 1805 (top) and 1807 (bottom).

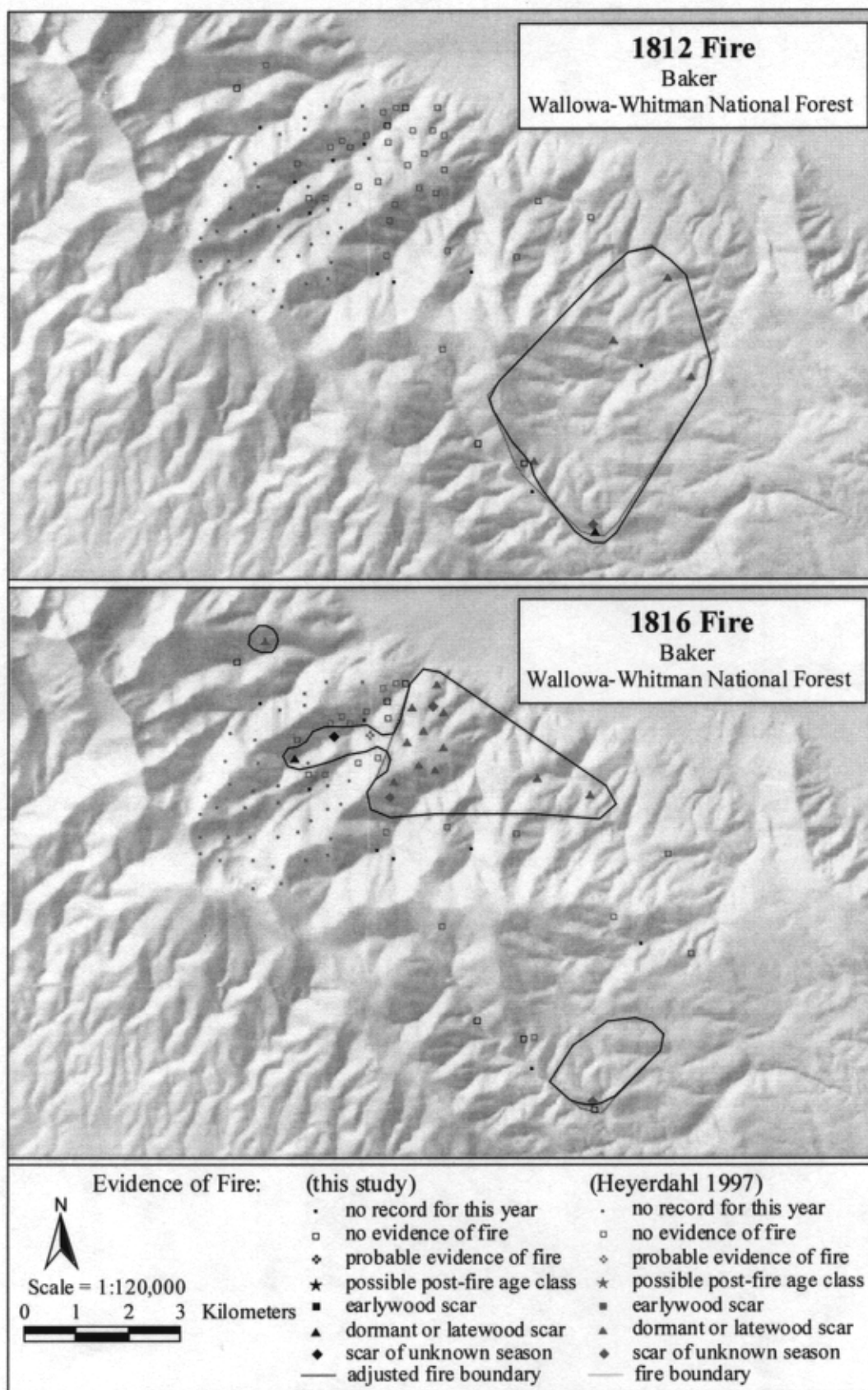


Figure 123. Baker fire maps for 1812 (top) and 1816 (bottom).