

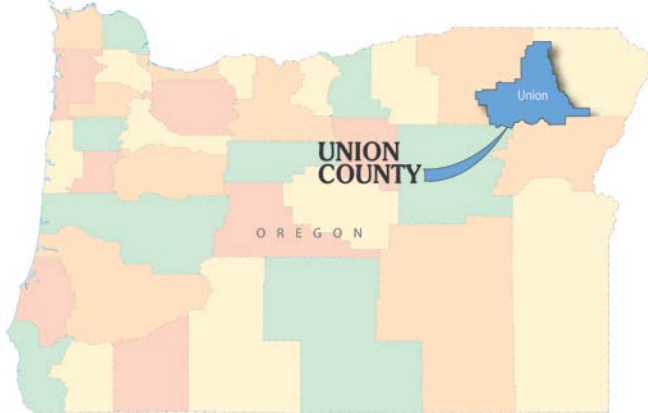


A. Cover Page

Applicant Information

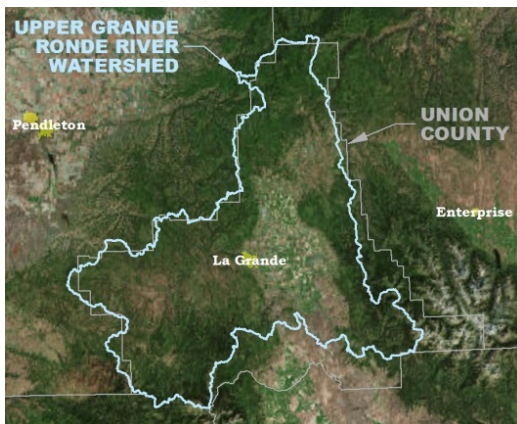
Convener

Name: Mark Davidson
Position: Union County Commissioner
Address: 1106 K Avenue, La Grande, Oregon 97850
Phone: (541) 963-1001
Email: mdavidson@union-county.org



Location

The planning area is the Upper Grande Ronde River Watershed located in northeast Oregon. The watershed boundary closely aligns with the boundary of Union County.



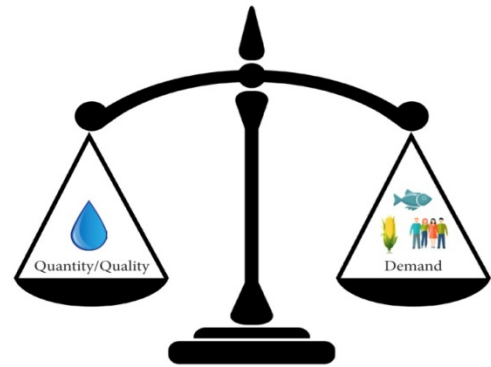
Key Project Partners

Key partners in this project will include Union County, the convener, as well as partners from each of the three major water resource demand groups: agricultural, municipal, and ecological. Please see Section C of this letter of interest for more information about the roles and responsibilities of each project partner. Project partners are excited about the

opportunity to engage in a holistic planning effort for this watershed.

Executive Summary

The Upper Grande Ronde River Watershed is a vital ecosystem that supports ranchers, farmers, and urban residents as well as an array of fish and wildlife species. Union County is convening a place-based integrated water resources planning effort to evaluate all demands on water resources within the watershed compared to available water resources.



This will be a collaborative effort among a balanced representation of local organizations that have a vested interest in the area’s water resources.

While there is a significant body of research on water quality, quantity, and ecological demands in the watershed, there is a lack of seasonal-level analysis to evaluate whether the demands are aligned with available water quality and quantity.

This effort will analyze water quality and quantity versus demand for each week of the year to determine when water quantity and quality exceed demand and when demand exceeds available supply. Analyzed data will be used to develop strategies to balance water demand with supply. This may include improvements in water storage, conveyance, treatment, and reuse. The planning effort will evaluate, on a watershed scale, possible water resources management strategies to meet the demands, and possible improvements to maximize water use efficiencies. The objective is to have a complete document outlining available water resources in the watershed compared to the demands on each resource that will serve as a “roadmap” to best align the demands with the available resources for an integrated and sustainable system.



B. Description of the Convener

Convener



Union County Commissioner Mark Davidson will serve as the convener for this planning effort. He has a demonstrated ability to bring diverse groups together to solve problems. Mark brings decades of experience in community planning, collaborative decision making, and balancing water needs.

Mark has called Union County home since 1971. He is a former La Grande mayor and city councilor and has served on the La Grande Planning Commission and the Urban Renewal Advisory Commission. He presently serves on the Wallowa Union Railroad Authority Board of Directors and is the president of the Union County Economic Development Corporation. Mark is active in the Association of Oregon Counties, serving on the Legislative Committee as co-chair of the Public Lands & Natural Resources Steering Committee and as second vice president. He was first elected as a commissioner in 2008 and is serving his second term on the Board of Commissioners. Mark has also served on the board of the Grande Ronde Model Watershed (GRMW), an important stakeholder for this effort.

Mark and other Union County commissioners are trusted and respected in the County. They have a holistic interest in the watershed and are intimately involved in water planning and resource management efforts, always seeking to balance in-stream and out-of-stream needs. Most recently, the commissioners have been involved in the rehabilitation of Gekeler Slough (a Catherine Creek tributary) to reduce flooding and fish stranding through a Surface Water Management Plan.

As an elected official, Mark is and will continue to be responsive to the needs of those across the Upper Grande Ronde River Watershed. He is excited about this opportunity to bring together competing resource interests to develop a collaborative approach for sustainable watershed planning.

Convener Resources

When work efforts extend beyond the capacity of Union County's staff, the County regularly contracts with local consultants. To facilitate this planning effort, the convener is proposing to utilize Anderson Perry & Associates, Inc. (AP), located in Union County, as well as other professional resources as needed.

AP is a full-service civil engineering, surveying, and natural resources firm that has provided services to Union County, municipalities, agricultural users, and resource agencies since 1975. AP's La Grande office has a diversified staff of 45 engineers, biologists, resource scientists, graphic designers, and communication professionals who reside in Union County.

AP has completed dozens of water-related projects for every community in Union County, including water system plans, water/wastewater system improvement projects, drinking water projects, storage reservoirs, well drilling, and aquifer storage and recovery.

AP has built a network of relationships in the Upper Grande Ronde River Watershed's water management community. AP has developed excellent working relationships with the local soil and water conservation district (SWCD), the watershed council, Indian tribes, and irrigators. AP has provided planning, facilitating, surveying, permitting, design, and construction engineering services on 45 water resources projects in the Grande Ronde River Subbasin, including stream restoration, habitat enhancement, bank stabilization, culvert replacements, levee removals, and fish passage improvements. AP regularly works with landowners to improve fish passage, conserve water, restore riparian habitat, and improve the efficiency and long-term viability of irrigation and livestock watering systems. AP has a history of finding solutions that are mutually beneficial to the environment and the landowner.

The leaders of this planning effort are tied to this watershed and are vested in the outcome of this process, which will improve planning facilitation. Individuals assisting Mark Davidson with facilitation include Brett Moore, P.E. (AP), Scott Hartell (Union County), and Randy Jones (Northeast Oregon Regional Solutions Center). See Attachment C for Convener Resource Skills.



C. Integration, Partnerships, and Stakeholder Engagement

Mark Davidson will engage partners and stakeholders in this process using the strong existing relationships he has with these entities. See Attachment A: Data Collection and Basin Planning History.

The list of invitees to the place-based planning process was determined based on the need to bring all major partners (i.e., water rights holders) together with major influencers (stakeholders with water resources expertise). The list below represents organizations with very diverse interests. The engagement of these entities is critical in obtaining data-driven results in this planning process. This is not an exhaustive list; other stakeholders are anticipated to come to the table as new issues emerge during the planning process. Attachment B includes contact information for each of our partners as well as letters of support.

Public support is critical for a successful planning effort. A public outreach program will be pursued. See Attachment D: Outreach Strategy.

Place-Based Partners

Place-based partners include water users with water rights in the basin. This will be considered the decision-making group. These groups and their anticipated roles are listed below:

- **Oregon Department of Fish and Wildlife (ODFW).** Agency hydrologists and biologists will share data on in-stream flow conditions and ecological health needs.
- **Cities of La Grande, Union, Cove, Elgin, Imbler, Summerville, and Island City.** Cities will assist with collecting data on municipal water needs and timing.
- **Union County Farm Bureau.** The Bureau represents individual landowners with water rights in the basin. They will work to determine water needs and assess areas for efficiency improvements.

Place-Based Stakeholders

Place-based stakeholders include those with interest and expertise in water resources management in the

basin. They will provide input and assist with decision-making. These groups and their anticipated roles are listed below:

- **GRMW.** The GRMW will supply data on in-stream conditions and prioritized restoration needs in the basin.
- **Confederated Tribes of the Umatilla Indian Reservation.** Scientists will contribute climate change data and assist with ecological needs evaluation.
- **Union SWCD.** The SWCD will assist with obtaining landowner information.
- **Legislative Representatives (U.S. Congressman Walden and U.S. Senator Wyden).** Political representatives will be engaged as necessary through this process.
- **Northeast Oregon Regional Solutions Center.** The Regional Solutions Center will assist in developing collaborative support for the planning process.
- **U.S. Fish and Wildlife Service (USFWS).** Biologists will provide existing information on ecological needs and assist ODFW with in-stream analysis.
- **National Marine Fisheries Service.** Biologists will provide existing information on ecological needs and assist ODFW with in-stream analysis.
- **U.S. Forest Service.** Rangers will share forest plan research including watershed-level data.
- **Oregon Cattleman's Association.** The association will assist with engaging ranchers to assess water needs.
- **Natural Resources Conservation Service (NRCS).** The NRCS will provide information on in-stream and agricultural needs.
- **Oregon State University (OSU) Extension Office.** OSU will provide information and assist with developing agricultural efficiency options.
- **Union County Economic Development Corporation (UCEDC).** UCEDC will assist with resource characterization and solution planning phases of the process.
- **Oregon Water Resources Department (OWRD).** OWRD will provide water resources data and guidance/technical assistance during the planning process.



D. Statement of Need

Water Issues and Concerns

The Upper Grande Ronde River Watershed is part of the Grande Ronde River Subbasin in northeast Oregon. This system includes the Grande Ronde River, Catherine Creek, and their numerous tributaries, which eventually drain to the Columbia River Basin.

Water supply shortages for in-stream and out-of-stream uses currently exist and will be intensified by climate change and increases in future demand. The watershed is home to numerous Endangered Species Act (ESA) listed species including Chinook, steelhead, and bull trout. The watershed is also home to farmers, ranchers, and municipal water users. Sixty percent of the watershed is private and federal forestland, while forty percent is agricultural; 794 farms and ranches are located in the watershed.

The planning effort will evaluate, on a basin-wide scale, possible water resources management strategies to meet the demands, and possible improvements to maximize water use efficiencies.

A Successful Pilot Project

The Upper Grande Ronde River Watershed would provide an excellent pilot project, because it has successfully served in this capacity in the past. In 1992, the Grande Ronde River Subbasin was selected by the Northwest Power Planning Council as the model watershed project in Oregon. Since then, the GRMW has conducted award-winning community consensus building and habitat restoration work.

The planning scale is appropriate for a pilot project, because the watershed boundaries are inclusive of water demands and supply throughout the planning area. Many residents of the Grande Ronde Valley have family histories here that trace back multiple generations; residents are vested in working toward sustainable water use practices.

Our integrated water resources strategy would focus on two basic areas. The first is in-stream needs and ecological health components of the watershed. A significant body of research is available for analysis because of the diligent efforts of the GRMW and

ODFW. This research includes data collection efforts, restoration projects, and monitoring of results. Water quality, surface water flow, and in-stream ecological health are factors with established restoration goals.

The second area is out-of-stream needs. Although significant information is available on seasonal water use and water availability, there has not been a basin-wide study completed to quantify periods of excess and shortages and what basin-wide strategies could be developed to use excess water or fill gaps.

We are excited for the opportunity to receive funding to bring all the existing studies together into a balanced plan. We anticipate that, during the compilation of this data, other issues may surface that will need to be addressed in this planning process.

Existing in-stream/ecological data and out-of-stream data will be evaluated in this planning effort using a water balance model to understand the periods when water supply and quality exceed demands and when these components fall short of demands. Water management strategies will be evaluated to try to balance the equation. This planning process will assess:

Groundwater

Aquifer recharge is a documented problem, as numerous communities, including the City of La Grande, have switched from using surface water to groundwater. Agricultural wells have declining water levels.

Surface Water

Seasonal variation in the quantity and quality of surface water flows will be modeled.

Water Quality

Most water quality concerns in the basin are related to water quantity and habitat modification. Total Maximum Daily Loads (TMDLs) completed in the basin will provide additional water quality information. These concerns would be documented seasonally.

User Needs

Farms and ranches depend on water availability to irrigate crops. Municipalities must provide clean drinking water for residents. Streams must contain sufficient water quantity and quality to sustain a healthy ecosystem. Determining the balance of water needs and availability is vital.



E. Proposed Approach

The approach uses the five steps of place-based planning.

Step 1: Build a Collaborative and Integrated Process (Months 0 to 6)



Using this letter of interest as a framework, the convener will facilitate the team drafting a Memorandum of Understanding (MOU) clarifying roles and responsibilities of partners. This MOU will include a work plan and schedule. Meetings will be held for the partners, including OWRD, to finalize the work plan and schedule for the planning process outlined in this letter of interest.

Deliverable: MOU, Work Plan, and Schedule

Step 2: Characterize Water Resources, Water Quality, and Basin Conditions (Months 6 to 12)



Supply Analysis: Existing data will be collected to document surface water flows, ecological conditions, and groundwater/aquifer availability on a weekly basis. The team will work closely with the Oregon

Department of Environmental Quality (DEQ) to collect existing water quality data and determine its validity. On a weekly basis, the quantity and quality of water available in the basin will be identified. Existing data on ecological and anthropogenic conditions will also be collected. Preliminary challenges and opportunities in each area will be described. The stakeholders will meet to discuss the draft report prior to finalization.

Deliverable: Existing Conditions Report

Step 3: Quantify Existing and Future Needs/Demands (Months 9 to 15)



Demand Analysis: Information will be gathered from each partner to determine current water needs by season and volume.

Agricultural demands will be reviewed using water rights and using a determination of crop consumptive use on all irrigated lands.

Municipal demands, along with future demand forecasts, will be obtained from the cities.

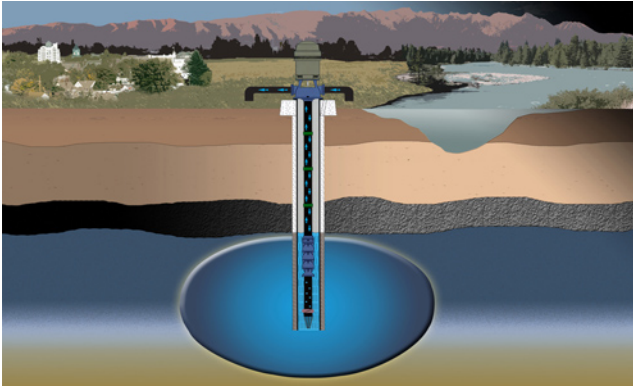
Ecological demands will be obtained from ODFW and other resource agencies.

This information will be used to create a model of weekly demand (quantity and quality) for water in each of these areas. The stakeholders will meet to discuss the draft report prior to finalization.

Deliverable: Water Resources Needs Summary Report



Step 4: Develop Integrated Solutions for Meeting Long-Term Water Needs (Months 15 to 21)



This step will include developing, evaluating, and selecting management strategy alternatives for aligning the available resource with the demands. We anticipate there will be many varying opinions about solutions to water resource issues. We believe that this will foster a diversity of ideas beneficial to the planning process. The viability of ideas will be assessed using a pre-agreed-upon benefits matrix.

The team has a history of developing innovative solutions to difficult issues. Representative strategies that build upon existing research may include:

Water Reuse: An example strategy to meet ecological water demands for the Ladd Marsh Wildlife Area involved using treated wastewater effluent from the City of La Grande instead of surface water. This allowed the surface water rights for those properties to be left in stream. This could serve as a model strategy for other areas within the watershed.

Water Exchange: In certain areas, agriculture uses cool, clean groundwater to fulfill a demand that could utilize warm, nutrient-rich water. It would be more beneficial to salmonids to have access to the cool, clean water during certain times of the year while providing warm water for agricultural uses.

Water Storage: Farmers and ranchers contend with floods in the spring and droughts in the summer, while fish have abundant cool water in the spring, yet experience low water quantity and quality in the summer. Innovative storage solutions, including

aquifer recharge, aquifer storage and recovery, and off-channel storage, could be considered.

This integrated solutions report is anticipated to be a living document that is representative of our vision, but also contains the flexibility to change as new needs emerge from the stakeholder groups.

The stakeholders will meet to discuss the draft report prior to finalization.

Deliverable: Integrated Solutions Report (see Attachment E: Report Outline)

Step 5: Plan Adoption and Implementation (Months 21 to 24)



Each partner will agree to the strategy and take responsibility for specific actions and tasks as noted in the Integrated Solutions Report. The final meeting will allow for all partners to approve and adopt the plan.

The ultimate goal of this step is to achieve general concurrence from all watershed stakeholders of the approaches and strategies identified in the final plan.

Deliverable: Final Upper Grande Ronde River Watershed Integrated Water Resources Strategy with an action plan for implementing improvements



F. Anticipated Results

Place-based planning will enable the Upper Grande Ronde River Watershed planning group to identify the times of the year when water availability exceeds the demand and other times of the year when demand exceeds the available resources. The plan will also develop strategies for aligning the available resources with demand and develop support from municipal, agricultural, and ecological water users for pursuing these strategies harmoniously.



The following major results are anticipated:

- Action items list for completing improvements that will help align available water resources with the demands on each resource
- Ability to use the Integrated Solutions Report to apply for funding for future projects
- Increased collaboration efforts in the basin through obtaining buy-in from all stakeholders on a plan to improve water use in the basin
- Clear path toward meeting water challenges
- Short-term benefits of summarizing all water resources information in one report
- Long-term benefits of accomplishing activities to reduce water supply and quality concerns in the watershed



Specifically, the following deliverables are anticipated:

- MOU, Work Plan, and Schedule
- Existing Conditions Report
- Water Resources Needs Summary Report
- Integrated Solutions Report
- Final Upper Grande Ronde River Watershed Integrated Water Resources Strategy with an action plan for implementing improvements





G. Request for Department Resources

Step 1: Build a Collaborative and Integrated Process (Months 0 to 6)

- Review of the MOU, work plan, and schedule by the OWRD team
- One OWRD staff member to attend working group and stakeholder meetings
- Funding:
 - Secured Match: \$6,000
 - OWRD Request: \$10,000
 - Total: \$16,000

Step 2: Characterize Water Resources, Water Quality, and Basin Conditions (Months 6 to 12)

- Assistance facilitating data collection with DEQ, ODFW, and others
- Preliminary review of draft Existing Conditions Report
- One OWRD staff member to attend select working group and stakeholder meetings
- Funding:
 - Secured Match: \$21,000
 - OWRD Request: \$40,000
 - Total: \$61,000

Step 3: Quantify Existing and Future Needs/Demands (Months 9 to 15)

- Assist with gathering water rights information
- Assist with developing impacts associated with climate change on future demands
- Review Water Resources Needs Summary Report
- Review water budget model
- One OWRD staff member to attend select working group and stakeholder meetings
- Funding:
 - Secured Match: \$21,000
 - OWRD Request: \$55,000
 - Total: \$76,000

Step 4: Develop Integrated Solutions for Meeting Long-Term Water Needs (Months 15 to 21)

- Review options
- One OWRD staff member to attend select working group and stakeholder meetings
- Review draft Integrated Solutions Report
- Funding:
 - Secured Match: \$22,000
 - OWRD Request: \$85,000
 - Total: \$107,000

Step 5: Plan Adoption and Implementation (Months 21 to 24)

- Review Final Upper Grande Ronde River Watershed Integrated Water Resources Strategy
- One OWRD staff member to attend select working group and stakeholder meetings
- Funding:
 - Secured Match: \$5,000
 - OWRD Request: \$7,000
 - Total: \$12,000

Total Secured Match: \$75,000
Total OWRD Request: \$197,000
Total Funding Request: \$272,000

See Attachment F: Budget



Attachment A: Data Collection and Basin Planning History

Below is a short list of guidance plans, data collection, planning studies, and executed water resources projects that have taken place within the Upper Grande Ronde Watershed that the convener, convener resources, or partners have conducted in recent years. A list of out-of-basin but in-region projects conducted by team members is included for reference.

GUIDANCE PLANS

Federal Columbia River Power System (FCRPS) Biological Opinion (2008)

- A series of mitigation strategies for basins affected by FCRPS dams

Grande Ronde Subbasin Plan – GRMW and Northwest Power and Conservation Council (2004)

- Ecosystem restoration, activity and program coordination, educational outreach, and private landowner involvement to promote species recovery in the Grande Ronde River Subbasin

Lower Snake River Compensation Plan – USFWS (1975; with updates)

- An effort to augment salmon populations through production of salmon and steelhead at hatcheries

DATA COLLECTION

Upper Grande Ronde Subbasin Water Quality Management Plan – Grande Ronde Water Quality Committee (2000)

- A comprehensive water quality management plan for the Upper Grande Ronde River Subbasin

Upper Grande Ronde Subbasin Agricultural Water Quality Management Area Plan – Grande Ronde Water Quality Committee (2010)

- A plan to maintain the economic viability of the agricultural industry while pursuing ecological integrity through maintenance, restoration, education, and monitoring

Grande Ronde River Basin Water Quality Technical Assessment: Temperature – DEQ (1998)

- Assessment of temperature conditions in the Grande Ronde River Basin

Grande Ronde River Basin Water Quality Technical Assessment: Water Quality – DEQ (1998)

- Assessment of water quality conditions in the Grande Ronde River Basin

Upper Grande Ronde River Sub-Basin Total Maximum Daily Load – DEQ (1999)

- Development of TMDLs for the Upper Grande Ronde River Subbasin

Technical Review of Managed Underground Storage of Water Study of the Upper Catherine Creek Watershed – U.S. Geological Survey (2014)

- Review of underground storage options in the Upper Catherine Creek Watershed

Catherine Creek Tributary Assessment – GRMW (2012)

- Evaluation of the overall status of the entire Catherine Creek watershed to identify and prioritize potential habitat restoration projects

Upper Grande Ronde Tributary Assessment – GRMW (2014)

- Assessment of physical characteristics of streams and how they have changed over time, with the purpose of identifying suitable habitat improvement actions specific to that tributary

PLANNING STUDIES

Upper Grande Ronde River Watershed Storage Feasibility Study – GRMW and AP (2013)

- Identification of potential opportunities for enhancing stream flow with cool water, thereby reducing temperatures in portions of the upper Grande Ronde River in Union County during the late summer and fall months



Gekeler Slough Surface Water Management Plan – Union County and AP (2013)

- Identification of system needs, improvement alternatives, and preferred actions and implementation strategies

Upper Catherine Creek Storage Feasibility Study – GRMW and AP (2010)

- Evaluation of the feasibility of the use of managed underground storage alternatives (aquifer storage and recovery or artificial recharge) for subsurface storage in the upper Catherine Creek Watershed in Union County to protect and enhance stream flows

Water Management and Conservation Plan – City of Union and AP (2010)

- Addressed the City’s long-term water supply in accordance with OWRD regulations. The Plan provided a summary of the City’s water use data and an updated forecast for when additional supply sources are anticipated to be required.

Water System Master Plan – City of La Grande and AP (2013)

- A review of the supply, storage, distribution, and financial components of the City's water system, specifically the immediate, medium, and long-term needs, with an emphasis on water supply alternatives and modifications that should be implemented to satisfy the identified needs

OUT-OF-BASIN EFFORTS

Watershed Management Plan – Baker City and AP (2014)

- A plan to foster effective, economical, and equitable management of water and ensure the continued protection of the Baker City Watershed to provide clean drinking water to stakeholders and support functions of the environment by strengthening existing management measures, creating strategies to mitigate risks to the watershed, and implementing a framework to adapt to new challenges



Attachment B: Partners

1. **Oregon Department of Fish and Wildlife:**
Bruce Eddy, East Region Manager, (541) 963-2138, bruce.r.eddy@state.or.us
2. **Union County Farm Bureau:** Jed Hassinger, President, jedhassinger@hotmail.com
3. **City of La Grande:** Robert Strobe, City Manager, (541) 962-1302 x309, rstrobe@cityoflagrande.org
4. **City of Imbler:** Mike McLean, Mayor, (541) 534-6095, mmclean@oregonwireless.net
5. **City of Elgin:** Allan Duffy, Mayor, (541) 437-1016, mayor@cityofelginor.org
6. **City of Island City:** Delmer Hanson, Mayor, (541) 963-5017, delmer@islandcityhall.com
7. **City of Cove:** Lyndon Rose, Mayor, citycove@uci.net
8. **City of Summerville:** Sheri Rogers, Mayor (541) 534-6835, summerville@eoni.com
9. **City of Union:** Ken McCormack, Mayor, (541) 805-9321, mccormack@aol.com
10. **Grande Ronde Model Watershed:** Jeff Oveson, Executive Director, (541) 663-0570, jeff@grmw.org
11. **Oregon Cattleman's Association:** Curtis Martin, oca@orcattle.com
12. **Confederated Tribes of the Umatilla Indian Reservation:** Allen Childs, Biologist, (541) 429-7940, NaturalResources@ctuir.org
13. **Union Soil and Water Conservation District:** Kathryn Frenyea, District Manager, (541) 963-1313, kfrenyea@unionswcd.org
14. **Senator Ron Wyden:**
<https://www.wyden.senate.gov/contact/>
15. **Representative Greg Walden:**
<https://walden.house.gov/contact-greg/email-me>
16. **Northeast Oregon Regional Solutions Center:**
Randy Jones, (541) 962-3983, Jones.Randy@deq.state.or.us
17. **U.S. Fish and Wildlife Service:** Gary Miller, Field Supervisor, (541) 962-8509, gary_miller@fws.gov
18. **National Marine Fisheries Service:** Mark Lacey, Biologist, mark.lacy@noaa.gov
19. **U.S. Forest Service:** Bill Gambill, District Ranger, (541) 963-7186
20. **Natural Resources Conservation Service:**
Mike Burton, District Conservationist, La Grande, (541) 963-4178, ext. 108, mike.burton@or.usda.gov
21. **OSU Union County Extension Service:** Darrin Walenta, Extension Agronomist with Field Crop Responsibilities in Union, Baker, and Wallowa Counties, (541) 963-1010, Darrin.Walenta@oregonstate.edu
22. **Union County Economic Development Corporation:** A. Daniel Stark, Executive Director, (541) 0963-0926, ucedc@eoni.com
23. **Oregon Water Resources Department**



Oregon

Kate Brown, Governor

Department of Fish and Wildlife

East Region
107 20th Street
La Grande, OR 97850
541-963-2138
Fax: 541-963-6670

November 25, 2015



Mark Davidson
Chairman
Union County Board of Commissioners
1106 K Avenue,
La Grande, OR 97850

RE: Place-Based Planning Letter of Interest - Union County (Upper Grande Ronde River Watershed)

Dear Chairman Davidson:

The Oregon Department of Fish and Wildlife (ODFW) supports Union County's letter of interest for the Place-Based Integrated Water Resources Planning Grant Program. Several competing demands rely on the water resources of Union County. These include agriculture, municipal/domestic, and fish and wildlife needs. This planning effort is important to the Upper Grande Ronde River Watershed to ensure in-stream and out-of-stream water needs are met into the future

ODFW has an experienced team of biologists and resource managers in this area who have studied and evaluated the Upper Grande Ronde River Watershed for decades. We anticipate spending 5 hours a month over the next 2 years on the planning proposed by Union County. Our activities will include:

- Providing copies of reports and data;
- Attending stakeholder meetings; and,
- Supporting the analysis and planning process.

The ODFW supports this project and will continue to participate through the resource characterization and solution planning phases.

Sincerely,

Bruce Eddy
East Region Manager

BE/cd



November 25, 2015

Oregon Water Resources Department
Attention: Place-Based Planning Grants
725 Summer Street NE, Suite A
Salem, Oregon 97301

RE: Place-Based Planning Letter of Interest - Union County (Upper Grande Ronde River Watershed)

Dear OWRD Review Team:

The Union County Farm Bureau supports Union County's letter of interest for the Place-Based Integrated Water Resources Planning Grant Program. A planning effort at this level is important to the Upper Grande Ronde River Watershed to ensure in-stream and out-of-stream water needs are met into the future.

Union County has several demands on the water resources in this area. These demands include agriculture, municipal/domestic, and fish and wildlife. Union County farmers hold water rights in this basin. Union County Farm Bureau members have had experience in managing water needs for livestock and agricultural resources in the Upper Grande Ronde River Watershed for decades. The Farm Bureau can contribute to this project through providing available data, expertise in natural resources management, and engaging landowners in the planning process. The Farm Bureau will fill a critical partnership in this place-based planning effort.

The Union County Farm Bureau board of directors supports this project and will continue to participate through the resource characterization and solution planning phases. We are pleased to assist with data collection and to attend and contribute to stakeholder meetings. Our level of financial support to the project will be determined as the project takes shape.

Sincerely,

Jed Hassinger

cc: OWRD, placebasedplanning@wrd.state.or.us

City of Cove
P.O. Box 8
Cove, Oregon 97824
Telephone (541) 568-4566
TTY: Oregon Relay 711
Fax (541) 568-7747
E-Mail: citycove@uci.net

November 25, 2015

Oregon Water Resources Department
Attention: Place-Based Planning Grants
725 Summer Street NE, Suite A
Salem, Oregon 97301

RE: Place-Based Planning Letter of Interest - Union County (Upper Grande Ronde River Watershed)

Dear OWRD Review Team:

The City of Cove supports Union County's letter of interest for the Place-Based Integrated Water Resources Planning Grant Program. A planning effort at this level is important to the Upper Grande Ronde River Watershed to ensure in-stream and out-of-stream water needs are met into the future.


Union County has several demands on the water resources in this area. These demands include agriculture, municipal/domestic, and fish and wildlife. The City of Cove retains water rights in this basin. The City has studied and managed water resources to provide for municipal water needs in the Upper Grande Ronde River Watershed for decades. The City can contribute to this project through providing water usage data and water availability information. The City can share resource concerns and plans for water use in the future. The City will fill a critical partnership in this place-based planning effort.

The City understands that this place-based planning project requires a 25 percent in-kind or cash match in funding to ensure local support and is pleased to offer support to this project in the following ways:

- Make available to the place-based planning team copies of previously completed reports and data collection efforts (approximately 20 hours of time)
- Ensure a department representative attends and contributes to stakeholder meetings (approximately 10 hours of time annually)
- Allocate approximately 10 hours per year over the two-year planning period to support the analysis and planning process

The City of Cove supports this project and will continue to participate through the resource characterization and solution planning phases.

Sincerely,


Lyndon Rose, Mayor

LR/cd

cc: OWRD, placebasedplanning@wrd.state.or.us



1114 J Ave.
La Grande, Oregon 97850

(541) 663-0570
Fax: (541) 962-1585

<http://www.grmw.org>

Board of Directors

Chair:
Mike Hayward
Vice-Chair:
Ted Taylor

Allen Childs
Norm Cimon
Larry Cribbs
Katie Frenyea
Jed Hassinger
Jack Howard
Laura Mahrt
Joe McCormack
Nick Myatt
Larry Nall
Dave Yost

Staff:
Mason Bailie
Mary Estes
Lyle Kuchenbecker
Coby Menton
Lacey Moore
Jeff Oveson
Jesse Steele

November 25, 2015

Oregon Water Resources Department
Attention: Place-Based Planning Grants
725 Summer Street NE, Suite A
Salem, Oregon 97301

RE: Place-Based Planning Letter of Interest - Union County (Upper Grande Ronde River Watershed)

Dear OWRD Review Team:

The Grande Ronde Model Watershed Board of Directors (GRMW) supports Union County's letter of interest for the Place-Based Integrated Water Resources Planning Grant Program. A planning effort at this level is important to the Upper Grande Ronde River Watershed to ensure in-stream and out-of-stream water needs are met into the future.

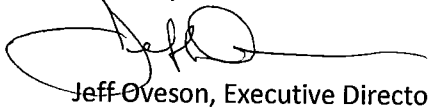
Union County has several demands on the water resources in this area. These demands include agriculture, municipal/domestic, and fish and wildlife. The GRMW works with landowners and those who hold water rights in this basin. The GRMW has an experienced team of biologists and resource managers who have studied and evaluated the Upper Grande Ronde River Watershed for decades. The GRMW can contribute to this project through providing available data, expertise in data collection, management, analysis, and engaging in community consensus building. The GRMW will fill a critical partnership in this place-based planning effort.

The GRMW understands that this place-based planning project requires a 25 percent in-kind or cash match in funding to ensure local support and is pleased to offer support to this project in the following ways:

- Make available to the place-based planning team copies of previously completed water resource reports and data collection efforts.
- Dedicate staff time in an effort to support Union County acquiring 25% cost-share contributions.

The GRMW supports this project and will continue to participate through the resource characterization and solution planning phases.

Sincerely,

A handwritten signature in black ink, appearing to read "Jeff Oveson", with a long horizontal flourish extending to the right.

Jeff Oveson, Executive Director

JO/cd

cc: OWRD, placebasedplanning@wrd.state.or.us



Union Soil and Water Conservation District

10507 N. McAlister Rd., Rm. 7 – La Grande, OR 97850 – Phone (541) 963-1313

November 24, 2015

Oregon Water Resources Department
Attention: Place-Based Planning Grants
725 Summer Street NE, Suite A
Salem, Oregon 97301

RE: Place-Based Planning Letter of Interest - Union County (Upper Grande Ronde River Watershed)

Dear OWRD Review Team:

The Union Soil and Water Conservation District (SWCD) supports Union County's letter of interest for the Place-Based Integrated Water Resources Planning Grant Program. A planning effort at this level is important to the Upper Grande Ronde River Watershed to ensure in-stream and out-of-stream water needs are met into the future.

Union County has several demands on the water resources in this area. These demands include agriculture, municipal/domestic, and fish and wildlife. The Union SWCD works with landowners and those who hold water rights in this basin. The Union SWCD has an experienced team of biologists and resource managers and are committed to working with our partners in the basin while continuing to support the interest of agricultural producers that we represent.

The Union SWCD can contribute to this project through management, analysis, and engaging in community consensus building. The Union SWCD will fill a critical partnership in this place-based planning effort.

The Union SWCD is pleased to offer support to this project in the following ways:

- Ensure a department representative attends and contributes to stakeholder meetings (approximately 20 hours of time annually)
- Allocate approximately 20 staff hours per year over the two-year planning period to support the analysis and planning process

The Union SWCD supports this project and will continue to participate through the resource characterization and solution planning phases.

Sincerely,

A handwritten signature in blue ink, appearing to read "K. Frenyea". The signature is fluid and cursive, with a long horizontal stroke at the end.

Kathryn Frenyea
District Manager, Union SWCD



Oregon

Department of Environmental Quality

DEQ Regional Solutions Center

Eastern Oregon University

233 Badgley Hall

1 University Boulevard

La Grande, OR 97850

(541) 962-3983

TTY 711

Kate Brown, Governor

November 24, 2015

Oregon Water Resources Department
Attention: Place-Based Planning Grants
725 Summer Street NE, Suite A
Salem, Oregon 97301

RE: Place-Based Planning Letter of Interest - Union County (Upper Grande Ronde River Watershed)

Dear OWRD Review Team:

The Oregon Department of Environmental Quality (DEQ) supports Union County's letter of interest for the Place-Based Integrated Water Resources Planning Grant Program. Thank you for asking. A planning effort at this level is important to the Upper Grande Ronde River Watershed to ensure in-stream and out-of-stream water needs are sustainably met into the future, to establish a rational evaluation of water supply and demand, and, ultimately, to explore the quality and value of water in the basin across the host of uses and users.

Union County has several demands on the water resources in this area. These demands include agriculture, municipal/domestic uses, industry, and fish and wildlife. Water and water resources management is near the core of DEQ's mission, to be a leader in restoring, maintaining, and enhancing the quality of Oregon's air, land and water, working collaboratively with Oregonians for a healthy, sustainable environment. Because drought, climate change, water availability, watershed resiliency, and water allocation are, largely, economic issues that directly or indirectly affect people, DEQ can contribute to this project through engaging in community consensus building.

DEQ understands that this place-based planning project requires a 25 percent in-kind or cash match in funding to ensure local support and is pleased to offer support to this project in the following ways:

- Make available to the Upper Grande Ronde place-based water planning team copies of previously completed, pertinent reports and data that can inform the team's efforts (approximately 40 hours of time)
- Ensure a representative attends and contributes to stakeholder meetings (approximately 20 hours of time annually)
- Allocate approximately 60 staff hours per year over the two-year planning period to support the analysis and planning process

DEQ supports integrated water resources planning projects and does support Union County's place based approach. We will continue to participate through scoping, resource characterization and feasibility/solution planning phases, as you provide overall planning leadership.

Sincerely,

Randy Jones

cc: Smita Mehta, Integrated Water Resources Strategy staff, ODEQ



United States Department of the Interior



FISH AND WILDLIFE SERVICE

La Grande Field Office

3502 Highway 30

La Grande, Oregon 97850

Phone: (541) 962-8584 FAX: (541) 962-8581

File Name: FWS Support_Place-based Planning_Union County.doc
Doc Type: Final

NOV 24 2015

Oregon Water Resources Department
Attn: Place-Based Planning Grants
725 Summer Street NE, Suite A
Salem, Oregon 97301

Subject: Place-Based Planning Letter of Interest – Union County (Upper Grande Ronde River Watershed)

Dear OWRD Review Team:

The U.S. Fish and Wildlife Service (Service) supports Union County's letter of interest for the Place-Based Integrated Water Resources Planning Grant Program. A planning effort at this level is important to the Upper Grande Ronde River Watershed to ensure in-stream and out-of-stream water needs are met into the future.


Union County has several demands on the water resources in this area. These demands include agriculture, municipal/domestic, and fish and wildlife. The Service has a strong interest in the proper ecological use of water in this basin for a number of reasons, including addressing the conservation of bull trout (*Salvelinus confluentus*), a federally-threatened species. The Service has experienced staff that are familiar with the Upper Grande Ronde River watershed and have been working collaboratively with others in this watershed for years. We can contribute to this project through providing any available data, expertise in fish biology and management, and continuing our engagement in interagency collaboration. The Service can fill a critical partnership in this place-based planning effort.

The Service understands that this place-based planning project requires a 25 percent in-kind or cash match in funding to ensure local support and can offer support to this project in the following ways:

- Ensure a Service representative attends and contributes to stakeholder meetings (approximately 20 hours of time annually)
- Allocate approximately 24 hours of staff time per year over the two-year planning period to support the analysis and planning process.

The Service will also continue to participate through the resource characterization and solution planning phases. If you have any questions regarding this support letter, please feel free to contact me at gary_miller@fws.gov or by phone at (541) 962-8509.

Sincerely,



Gary S. Miller
Field Supervisor

cc:

Mark Davidson, Union County Commission, La Grande, Oregon
OWRD, placebasedplanning@wrд.state.or.us



Union County Extension Service
10507 N McAlister Rd, Room 9, La Grande, Oregon 97850
Phone 541-963-1010 | Fax 541-963-1036

Extension Service
Union County

November 25, 2015

Oregon Water Resources Department
Attention: Place-Based Planning Grants
725 Summer Street NE, Suite A
Salem, Oregon 97301

RE: Place-Based Planning Letter of Interest - Union County (Upper Grande Ronde River Watershed)

Dear OWRD Review Team:

The Oregon State University (OSU) Union County Extension Service supports Union County's letter of interest for the Place-Based Integrated Water Resources Planning Grant Program. A planning effort at this level is important to the Upper Grande Ronde River Watershed to ensure in-stream and out-of-stream water needs are met into the future.

Union County has several demands on the water resources in this area. These demands include agriculture, municipal/domestic, and fish and wildlife. The OSU Union County Extension Service works with landowners and those who hold in-stream water rights in this basin. The OSU Union County Extension Service can contribute to this project through providing available data/knowledge related to local cropping systems and agronomic research, in addition to, outreach and engagement opportunities for community consensus building with landowners. OSU Extension Service- Union Co. will fill a critical partnership in this place-based planning effort.

The OSU Union County Extension Service understands that this place-based planning project requires a combined 25 percent in-kind or cash match in funding from all project participants to ensure local support and is pleased to offer support to this project in the following ways:

- Ensure a department representative attends and contributes to stakeholder meetings (approximately 20 hours of time annually)
- Allocate approximately 10 – 20 staff hours over the two-year planning period to support the analysis and planning process

The OSU Union County Extension Service supports this project and will continue to participate through the resource characterization and solution planning phases.

Sincerely,

A handwritten signature in blue ink that reads "Darrin L. Walenta".

Darrin L. Walenta, OSU Extension Service Agronomist

DW/cd

cc: OWRD, placebasedplanning@wrd.state.or.us



November 25, 2015

Oregon Water Resources Department
Attention: Place-Based Planning Grants
725 Summer Street NE, Suite A
Salem, Oregon 97301

RE: Place-Based Planning Letter of Interest - Union County (Upper Grande Ronde River Watershed)

Dear OWRD Review Team:

The Union County Economic Development Corporation (UCEDC) supports Union County's letter of interest for the Place-Based Integrated Water Resources Planning Grant Program. A planning effort at this level is important to the Upper Grande Ronde River Watershed to ensure in-stream and out-of-stream water needs are met into the future.

Union County has several demands on the water resources in this area. These demands include agriculture, municipal/domestic, and fish and wildlife. UCEDC focuses on economic growth and development in Union County. Assuring availability of water resources (quantity and quality) to support manufacturing and industrial activities is critical to the economic well-being of the County. UCEDC can contribute to the success of this project by assisting in acquiring critical data on current water demands in the industrial/manufacturing sector of the local economy and projections of future growth of this sector as well as contribute to community consensus building.

UCEDC understands that this place-based planning project requires a 25 percent in-kind or cash match in funding to ensure local support and is pleased to offer support to this project in the following ways:

- Ensure a UCEDC representative attends and contributes to stakeholder meetings (approximately 20 hours of time annually)
- Allocate approximately 60 staff hours per year over the two-year planning period to support the analysis and planning process

UCEDC supports this project and will continue to participate through the resource characterization and solution planning phases.

Sincerely,

A handwritten signature in blue ink that reads 'Daniel Stark'. The signature is stylized and cursive.

A. Daniel Stark, Executive Director



Attachment C: Convener Resource Skills

All of our partners bring unique, high-level skills to this process. The following sections highlight a few key team members and their outstanding abilities. As the team is further developed, additional skill sets will be added to this planning effort.

Brett Moore, P.E. (AP)

Brett is a Professional Engineer, the director of AP's Natural Resources Group, and a member of the AP Board of Directors. Brett has 21 years of experience with the planning, design, and construction administration of irrigation, water resources, and natural resources management projects.

Brett is involved with all phases of projects including planning, designing, preparing plans and specifications, cost estimating, and construction administration. Brett has played the role of facilitation engineer on nearly every project he has seen through to construction. When working at the intersection of agencies, irrigators, and others, Brett maintains neutrality and vision for what is best to fill the need. Brett recently received recognition for his facilitation skills from the DEQ (see the attached letter).

Other AP staff resources to be used in this effort include graphic designers, technical writers, American Council of Engineering Companies award winning engineers, biologists, scientists, and planners. Because of Union County's remote location, the AP team has grown to possess the skills needed to provide all services to meet specific project needs. Brett and the AP team take pride in being a full-service firm that can facilitate projects from cradle to grave.

Scott Hartell (Union County)

As the Union County Planner, Scott is accustomed to working with people from all walks of life to accomplish common goals. He takes pride in collaborative problem solving and gaining assistance from people and organizations in the region that have the best skills to accomplish a given task.

Scott received a B.S. degree from Eastern Oregon State College (now Eastern Oregon University) in Geography and Regional Planning. He began working at the Union County Planning Department in November 1995.

Scott's work history includes planning for unincorporated Union County; establishing a GIS and GPS mapping program for Union County; Cove Well Water Study with the Oregon Health Department and DEQ; Union County Surface Water Management Plan; Elkhorn Windfarm; Antelope Ridge Windfarm; Idaho Power Company Boardman to Hemingway High Voltage Transmission Line Project application review through the Environmental Protection Agency and State Energy Facility Siting Council review processes; and serving as staff to the Union County Planning Commission and Union County Board of Commissioners.

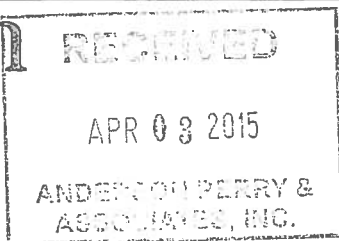
Randy Jones (Northeast Oregon Regional Solutions Center)

As the agency liaison to the Northeast Oregon Regional Solutions Center and as manager of the La Grande field office, Randy travels throughout the region bringing people together on projects ranging from state parks to economic development. His primary responsibilities focus on problem solving, conflict resolution, and seizing opportunities for regionally identified priority projects that create and retain jobs, require integration of state agency work and funding opportunities, and strengthen relationships between government and higher education. Randy works to develop sustainable strategies across the region and to develop and support initiatives and decisions at the nexus of environment and economy. Randy is widely recognized as a neutral problem-solver with a track record for seeing projects through to completion.



Oregon

Kate Brown, Governor



Department of Environmental Quality

Eastern Region - Pendleton Office

800 SE Emigrant Ave, Suite 330

Pendleton, OR 97801

Phone: (541) 276-4063

Fax: (541) 278-0168

Relay Service: 711

April 1, 2015

Andy Perry
Anderson Perry and Associates, Inc.
PO Box 1107
La Grande, Oregon 97850

Dear Mr. Perry,

I am writing this letter on behalf of myself and Don Butcher, Oregon Department of Environmental Quality (DEQ) Water Quality Manager in Pendleton. We would like to recognize the efforts of Brett Moore, PE, in fostering goodwill between our agency and the public. We appreciate his excellent communication abilities and style, insights and knowledge, willingness to voice his support of DEQ's staff and efforts, and ability to develop team relationships. It is sometimes difficult to be heard by the regulated community. During meetings with Brett, he often makes statements that bridge gaps amongst the attendees. As an example, this week Brett attended an Operator Certification regulatory update workshop presented by Don Butcher, and Don invited him to fill in any gaps – Brett brought out some very key points on regulations and collaboration, calmly and appropriately co-coaching from the back of the room – everybody appreciated the added knowledge and insights. We appreciate these efforts and to the successes that result from his participation. We look forward to working with him on current and future projects.

Sincerely,

Heidi Williams, PE
Sr. Plan Review Engr.
Eastern Region

c: Brad Baird, PE, Anderson Perry & Assoc., Inc., PO Box 1107, La Grande, OR 97850





Attachment D: Outreach Strategy

Our outreach strategy has already begun through the process of drafting this letter of interest. In reaching out to our friends, neighbors, and colleagues for letters of support, we are reminded of the strong spirit of optimism in our community.

Union County is unique in that it is home to a four-year university, numerous federal agency offices, and those who have farmed the land for generations. Our community is so small that although perspectives differ on issues ranging from wolves to water resources, we all genuinely respect each other and share a common goal of doing what is best for long-term regional prosperity.

We are all vested in the outcome of this process and it is anticipated that the membership of the working group will expand as this planning effort takes shape.

This outreach strategy will consist of two methods of communication: direct communication and general messaging.

Direct communication for this integrated water resources strategy will focus on getting a high level of engagement from those who are the most able to make changes to water consumption.

The convener has a strong record of developing reasonable strategies that can be implemented. Outreach will include finding funding mechanisms for projects and achieving stakeholder agreement in each step of the process.

Utilizing email, phone calls, and meetings, the partner/stakeholder group will exchange information throughout this process to ensure that the most up-to-date information is being applied to the water balance model.

General messaging will keep the public informed about the process. Meetings will be widely advertised via newspaper and partner websites so community members can attend meetings to learn about and contribute to the process.





Attachment E: Report Outline

Work Flow

- MOU, Work Plan, Schedule (roles/responsibilities)
- Meeting to discuss/sign MOU and discuss wish list research questions (Month 6)
- Existing Conditions Report
- Meeting to share information (Month 12)
- Water Resources Needs Summary Report.
- Meeting to discuss demand and water balance model (Month 15)
- Integrated Solutions Report
- Meeting to discuss solutions (Month 21)
- Final Upper Grande Ronde River Watershed Integrated Water Resources Strategy with an action plan for implementing improvements
- Meeting to approve the plan (Month 24)

General Report Outline

Upper Grande Ronde River Watershed Integrated Water Resources Strategy Outline

The following is a preliminary report outline that will be further developed and refined by the working group.

1. Introduction
 - a. Background
 - b. Purpose and Need
 - c. Project Area
2. Strategy Team
 - a. Convener Role
 - b. Co-convener Role
 - c. Partner Roles
 - d. Stakeholder Roles
 - e. Decision Making Process

Deliverable: MOU

3. Water Resources Characterization
 - a. Description of Streams (Grande Ronde River, Catherine Creek, and Tributaries)
 - i. Water Quality
 - ii. Water Quantity
 - iii. Aquatic Resources

- iv. Habitat
 - v. Historical Improvements/Issues
 - b. Description of Wetlands and Other Waterbodies (Ladd Marsh, Morgan Lake, etc.)
 - i. Water Quality
 - ii. Water Quantity
 - iii. Aquatic Resources
 - iv. Habitat
 - v. Historical Improvements/Issues
 - c. Description of Groundwater/Aquifers
 - i. Water Quality
 - ii. Water Quantity
 - d. Description of Anthropogenic Elements
 - i. Farms
 - ii. Ranches
 - iii. Municipalities
 - e. Other Elements
 - i. Fire
 - ii. Climate Change
 - iii. Drought

Deliverable: Existing Conditions Report

4. Water Resources Needs/Demands
 - a. Municipal
 - i. Cities of Upper Grande Ronde Watershed
 1. Water Needs
 - b. Agricultural
 - i. Irrigation Needs
 - c. Ecological
 - i. For Each Stream
 - ii. For Other Waterbodies
5. Water budget model (by month)
 - a. Available Resource
 - b. Demands (Quantity and Quality)
 - c. Opportunities

Deliverable: Water Resources Needs Summary Report



6. Integrated Solutions

- a. Efficiency and Conservation Measures
 - i. Irrigation practices and ditch systems (conveyance) will be evaluated to find efficiencies.
 - ii. Municipal water conservation opportunities will be researched including rebate programs and incentives to reduce lawn watering/provide landscaping alternatives. Parks and recreation water use will be evaluated.
- b. Built and Natural Storage
 - i. Evaluation of storage options, both built and natural as well as storage that optimizes in-stream and out-of-stream benefits. Sites, legal requirements, social considerations, technical constraints, costs, land use, and environmental effects will be considered.
- c. Water Right Transfers, Rotation Agreements, and Exchange Opportunities
 - i. Opportunities to exchange low quality water with high quality water between users to align the resource with the need will be evaluated.
 - ii. Multiple water rights holders require diversion repairs and modifications soon. Diversion points will be evaluated for opportunities to change points of diversions or transfer options.
- d. Non-Traditional Water Supply Techniques
 - i. Wastewater/greywater reuse opportunities for land irrigation will be evaluated. The co-convener has conducted numerous studies of wastewater irrigation, obtained funding, designed, and constructed wastewater reuse projects.

e. Infrastructure

- i. Water system infrastructure for each community will be evaluated.
- ii. Wastewater system infrastructure for each community will be evaluated. Reservoir sedimentation may be evaluated.

f. Watershed and Habitat Restoration

- i. Entities in this basin have expertise in identifying opportunities, obtaining funding, and designing and implementing restoration projects. The GRMW, ODFW, Union SWCD, and AP have worked together on numerous projects to return ecological services to the basin and support ESA-listed species. High potential areas for restoration will be identified.

g. In-stream Flow Protections

- i. ODFW will prioritize streamflow restoration projects in the basin.

h. Water Quality Protections

- i. Drinking water issues will be reviewed
- ii. DEQ concerns with regional water supplies will be reviewed

i. Monitoring

- i. There are already numerous monitoring efforts occurring in this basin. These data will be integrated into the planning model to find gaps or address known concerns.

Deliverable: Integrated Solutions Report

7. Conclusion/Adoption

- a. Adopt the Final Upper Grande Ronde River Watershed Integrated Water Resources Strategy

Deliverable: Final Upper Grande Ronde River Watershed Integrated Water Resources Strategy with an action plan for implementing improvements.



Attachment F: Budget

This is a preliminary budget. It is anticipated that some of the budget line items may shift among Union County, consultants, and partners as the work plan is developed.

| | In-Kind Match | OWRD Funds | Total Costs |
|---|-----------------|------------------|------------------|
| Step 1: Build a Collaborative and Integrated Process (Months 0 to 6) | | | |
| Union County | \$2,500 | | \$2,500 |
| Consulting Services | | \$8,000 | \$8,000 |
| Partners | \$3,500 | \$2,000 | \$5,500 |
| SUBTOTAL | \$6,000 | \$10,000 | \$16,000 |
| Step 2: Characterize Water Resources, Water Quality, and Basin Conditions (Months 6 to 12) | | | |
| Union County | \$5,000 | | \$5,000 |
| Consulting Services | | \$30,000 | \$30,000 |
| Partners | \$16,000 | \$10,000 | \$26,000 |
| SUBTOTAL | \$21,000 | \$40,000 | \$61,000 |
| Step 3: Quantify Existing and Future Needs/Demands (Months 9 to 15) | | | |
| Union County | \$5,000 | | \$5,000 |
| Consulting Services | | \$50,000 | \$50,000 |
| Partners | \$16,000 | \$5,000 | \$21,000 |
| SUBTOTAL | \$21,000 | \$55,000 | \$76,000 |
| Step 4: Develop Integrated Solutions for Meeting Long-Term Water Needs (Months 15 to 21) | | | |
| Union County | \$5,000 | | \$5,000 |
| Consulting Services | | \$70,000 | \$70,000 |
| Partners | \$17,000 | \$15,000 | \$32,000 |
| SUBTOTAL | \$22,000 | \$85,000 | \$107,000 |
| Step 5: Plan Adoption and Implementation (Months 21 to 24) | | | |
| Union County | \$2,500 | | \$2,500 |
| Consulting Services | | \$6,000 | \$6,000 |
| Partners | \$2,500 | \$1,000 | \$3,500 |
| SUBTOTAL | \$5,000 | \$7,000 | \$12,000 |
| TOTAL | \$75,000 | \$197,000 | \$272,000 |

| Secured Partner Match | Hours | Cost Per Hour | Total |
|---|-------|---------------|-----------------|
| UCEDC | 160 | \$100 | \$16,000 |
| Union SWCD | 80 | \$100 | \$8,000 |
| ODFW | 120 | \$100 | \$12,000 |
| Northeast Oregon Regional Solutions Center (D | 200 | \$100 | \$20,000 |
| City of Cove | 60 | \$100 | \$6,000 |
| OSU Extension Office | 70 | \$100 | \$7,000 |
| USFWS | 88 | \$100 | \$8,800 |
| Union County Farm Bureau ¹ | TBD | | TBD |
| GRMW ² | TBD | | TBD |
| NRCS ³ | | | \$0 |
| TOTAL | | | \$77,800 |

Notes:

¹Supportive; no specific financial contribution offered.

²Supportive; offer for staff match time but no specific amount of time offered.

³Supportive, but no formal letter or match offer.