



# UNION COUNTY SURVEYOR GEOGRAPHIC INFORMATION SYSTEM

## Union County Survey/Partition GIS

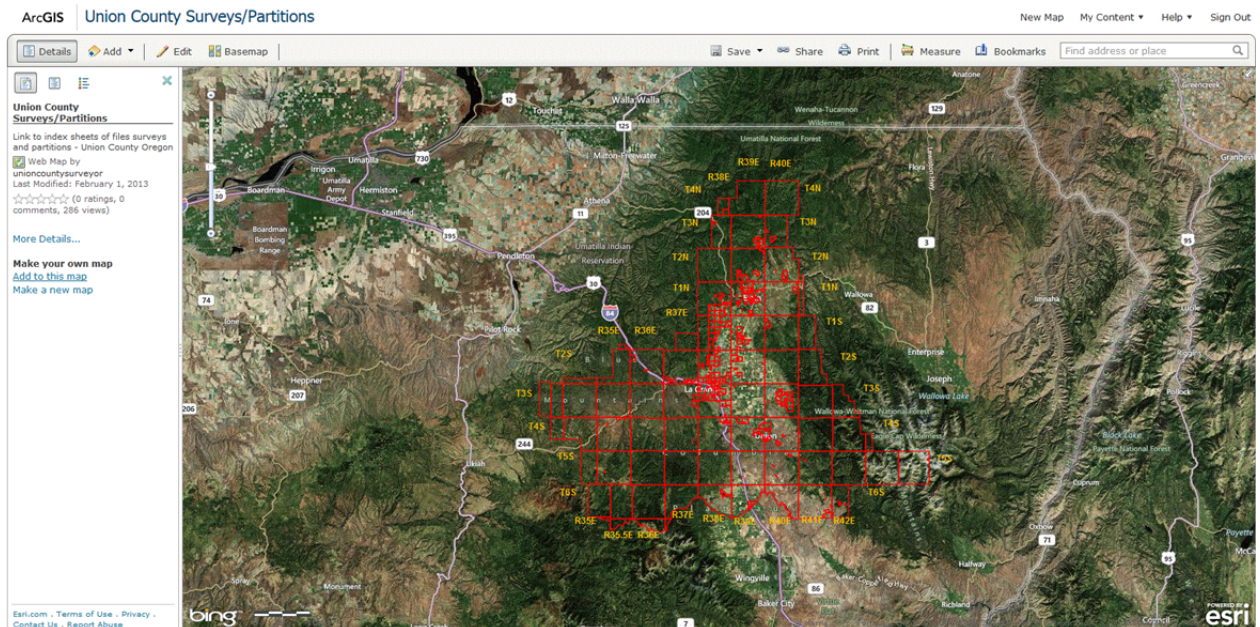
This layer gives access to index sheets that depict all surveys and partitions, completed within Union County, that are on record at the Union County Surveyor's office. It is the intent to make researching survey monumentation for a given property available to the private surveyors and the general public.

Currently the system used by the Union County Surveyor is to depict surveys indexed by color coded lines on tax assessment maps. The GIS makes these indexed tax maps available via scanned pdf documents. To do research on the surveys within the vicinity of a property, it is recommended that the user knows the tax lot and tax map numbers of their property.

### *Instructions for using the Union County Survey/Partition GIS*

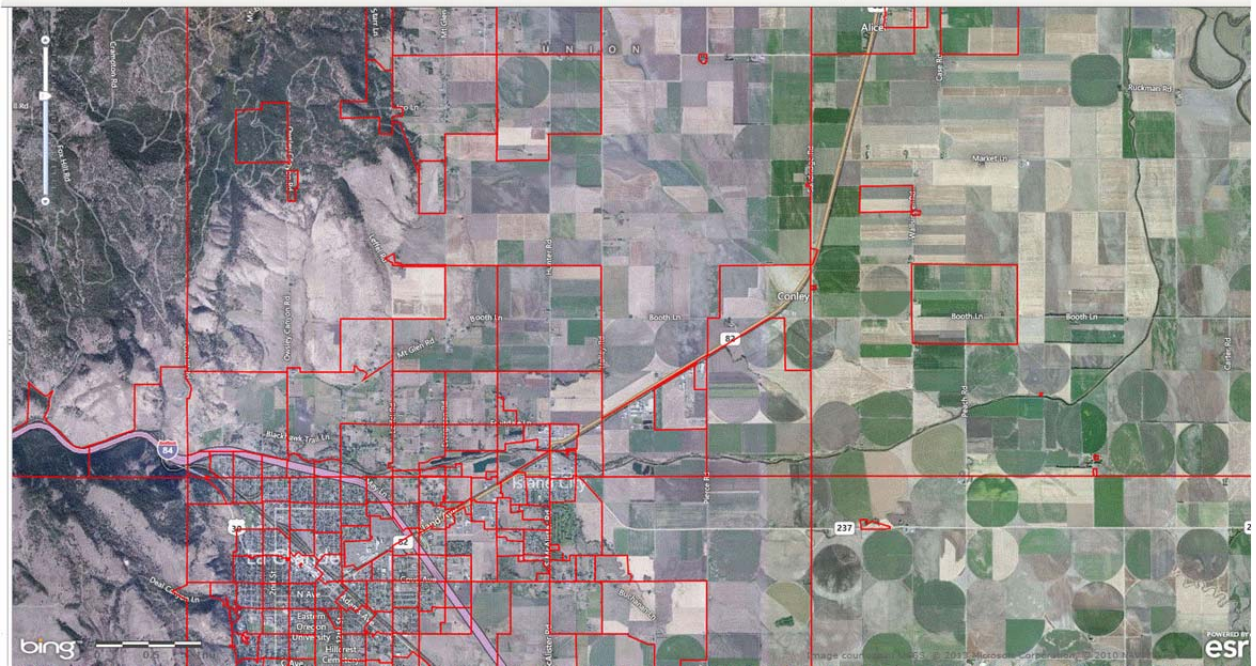
The Union County Public Land Survey GIS can be accessed at <http://bit.ly/YoDSxl>

- 1) The first screen that shows up displays the townships of Union County.

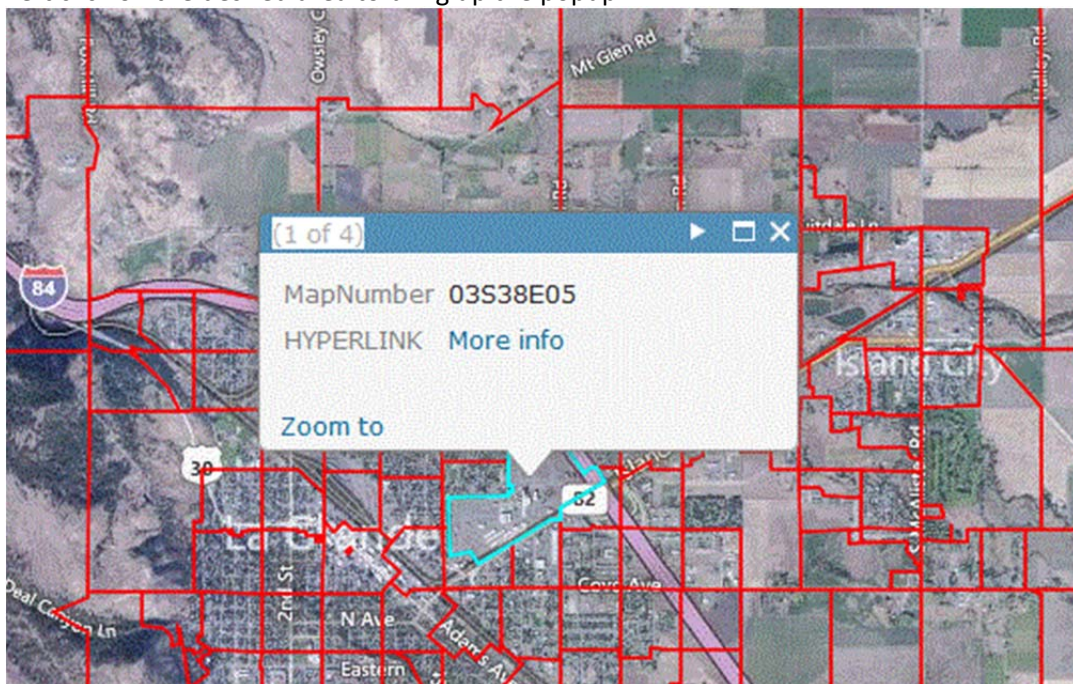




- 2) Use the Township and Range labels to zoom into the desired area. The red outlines of each figure pertain to the tax assessment map.



- 3) Left click on the desired area to bring up the popup.

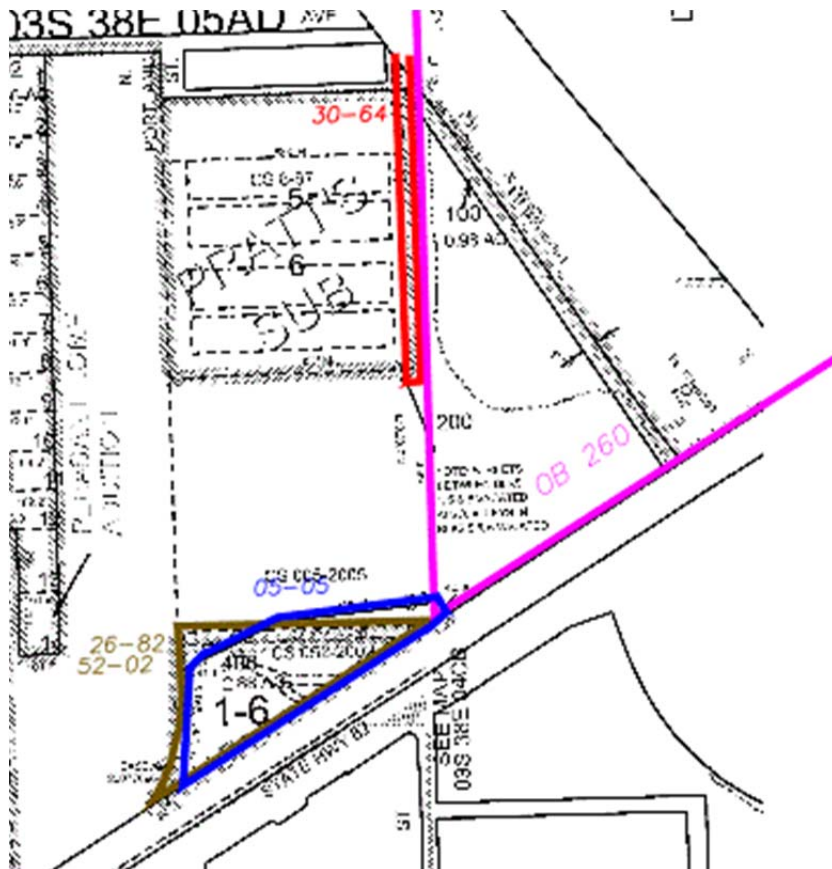


- 4) The 'MapNumber' field indicates the tax map. To display the indexed tax map, left click the "More Info" hyperlink next to the 'HYPERLINK' field. This will link to a pdf file of the tax assessment map with colored lines.



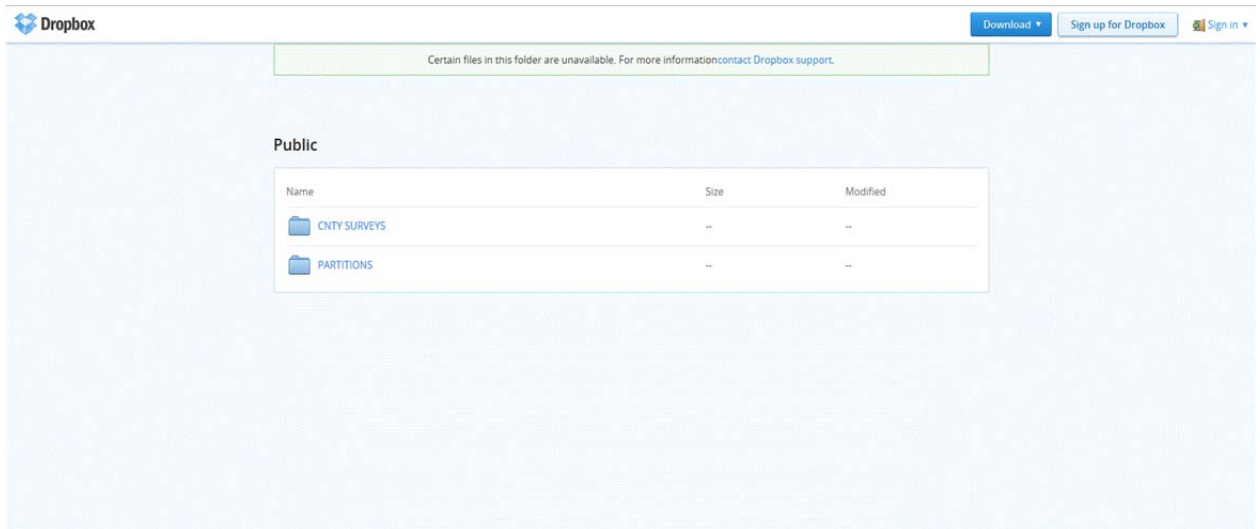
The different colors refer to the various surveyors and survey firms that have done work in the area.

Next to each colored outline is the survey or partition number. Surveys will generally be coded as a two digit number for the survey number, followed by a hyphen, followed by a two digit number for the survey year. Occasionally, a four digit number is used for the year. Old Book Surveys are color coded in pink and begin with an 'OB' designation. Partitions begin with the letter 'P'.



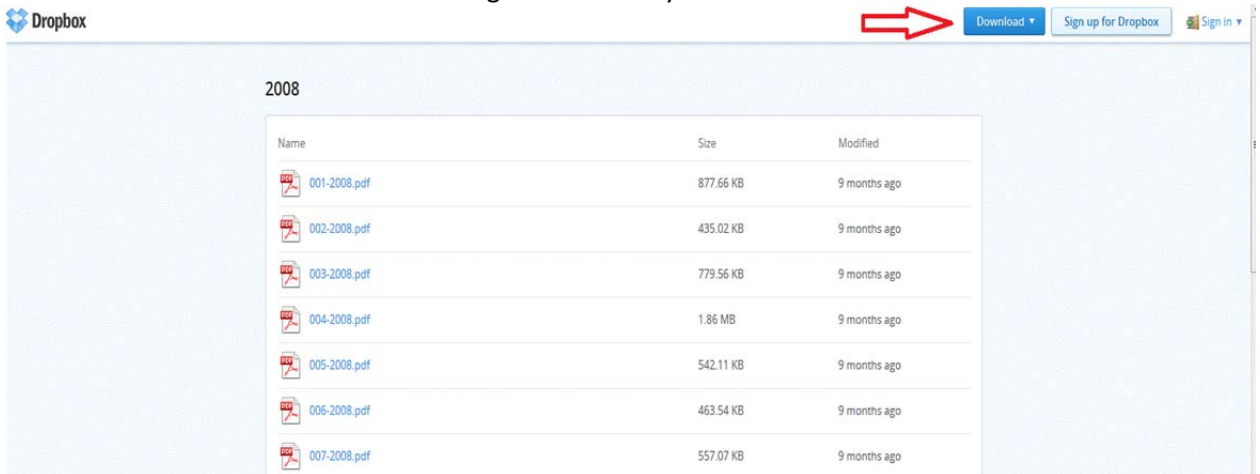


- 5) Make a note of the surveys and partitions that you want to view. A repository of all surveys and partitions can be found at <https://www.dropbox.com/sh/4r7nouz0dqjgn1p/WbLqtOHMbi>



Navigating the folder structure is similar to the folder structure on any Windows computer.

- 6) Navigate to the desired survey or partition and use the DOWNLOAD button in the upper right hand corner to download a scanned image of the survey.



Please email all questions, concerns, found errors and/or recommendations to [jeff@bgbsurveyors.com](mailto:jeff@bgbsurveyors.com)